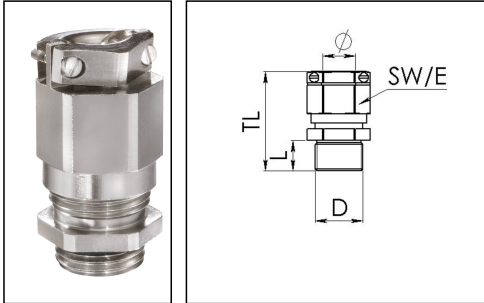


EMSKVZ 16 RW

Railway cable gland, brass nickel-plated, M16, with external strain relief



Products may differ in size, colour and appearance to those shown. If you require further information or customisation, please contact us directly.



| | |
|----------------------------|-----------------------------|
| Material cable gland | Brass nickel-plated |
| Material clamping cage | Polyamide UL94-V0 |
| Material sealing gasket | EPDM |
| Hazard level EN acc. 45545 | R22=HL3 / R23=HL3 / R24=HL3 |
| Temp. range min | -40 °C |
| Temp. range max | 100 °C |
| Protection class | IP69, IP68 (5 bar 30 min) |
| Thread type | M |
| Ø Connection thread D | 16 |
| Lead | 1,5 |
| Length screw-in thread L | 5 mm |
| Ø cable diameter min | 4,5 mm |
| Ø cable diameter max | 10 mm |
| Key width SW | 20 mm |
| Collar diameter (E) | 22 mm |
| Total length TL | 34 mm - 42 mm |
| Type of cable anchorage | B |
| Install. torques fitting | 4 N m |
| Install. torques cap nut | 4 N m |
| Impact category | 6 |
| Torque clamp srew | 0,3 N m |
| Surface | Nickel-plated |
| Order no. nickel-plated | 10109128 |
| Packing unit | 25 |
| Type | EMSKVZ 16 RW |

Your Contact:

WISKA Hoppmann GmbH

Kisdorfer Weg 28 · 24568 Kaltenkirchen · Germany

☎ +49-4191-508-0 · 📠 +49-4191-508-209

contact@wiska.de · www.wiska.com

ETIM-Classification

EC000441

Recommended accessories

| | |
|------------------|----------|
| EADR 16 | 10062802 |
| EMMU 16 | 10063142 |
| BS 10 | 10064008 |
| RDE 16 RW | 10105371 |

14.01.2021

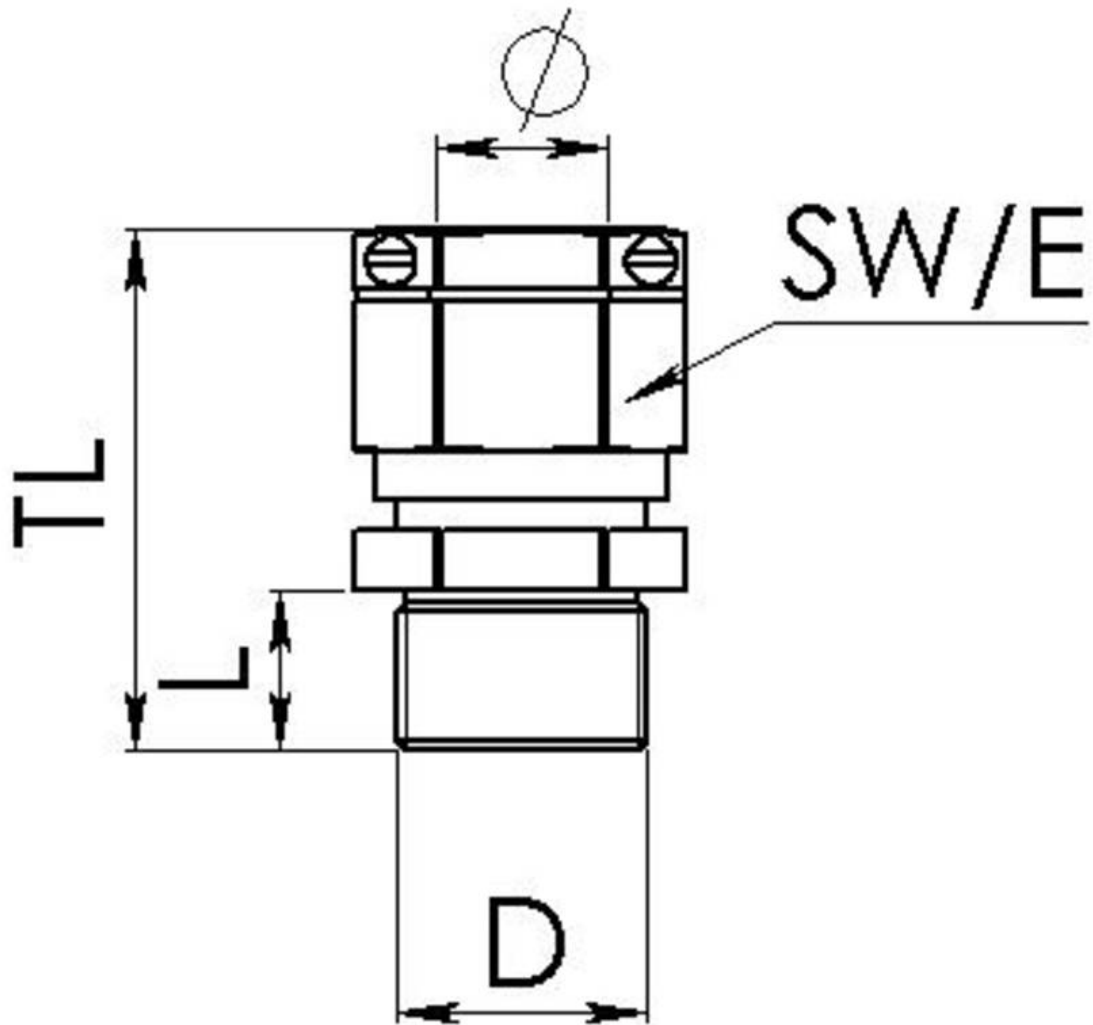
Your Contact:

WISKA Hoppmann GmbH

Kisdorfer Weg 28 · 24568 Kaltenkirchen · Germany

☎ +49-4191-508-0 · 📠 +49-4191-508-209

contact@wiska.de · www.wiska.com



Your Contact:

WISKA Hoppmann GmbH

Kisdorfer Weg 28 · 24568 Kaltenkirchen · Germany

☎ +49-4191-508-0 · 📠 +49-4191-508-209

contact@wiska.de · www.wiska.com