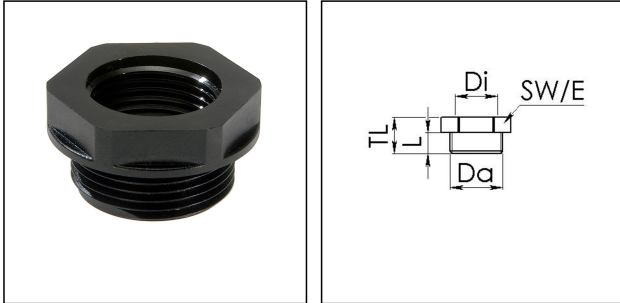


EX-KRM 40/32

Ex-reduction adaptor, polyamide, M40-M32



Products may differ in size, colour and appearance to those shown. If you require further information or customisation, please contact us directly.



Material	Polyamide, fibre reinforced
Material sealing gasket	EPDM
Temp. range min	-40 °C
Temp. range max	75 °C
Protection class	IP66 / IP68 (5 bar 30 min)
Type of protection	Ex eb, Ex tb
Ex-Certificate	IECEX, ATEX
Thread type outer	M
Ø outer thread	40
Lead outer	1,5
Length screw-in thread L	12 mm
Thread type inner	M
Ø inner thread	32
Lead inner	1,5
Key width SW	46 mm
Collar diameter (E)	51 mm
Total length TL	19 mm
Form	B
Product Color	RAL 9005
Equipment	Incl. connection thread gasket
Order no. RAL 9005	10064731
Type	EX-KRM 40/32
Packing unit	25
ETIM-Classification	EC000938

Your Contact:

WISKA Hoppmann GmbH

Kisdorfer Weg 28 · 24568 Kaltenkirchen · Germany

☎ +49-4191-508-0 · 📠 +49-4191-508-209

contact@wiska.de · www.wiska.com

Recommended accessories

EMUG 40

10061785

14.01.2021

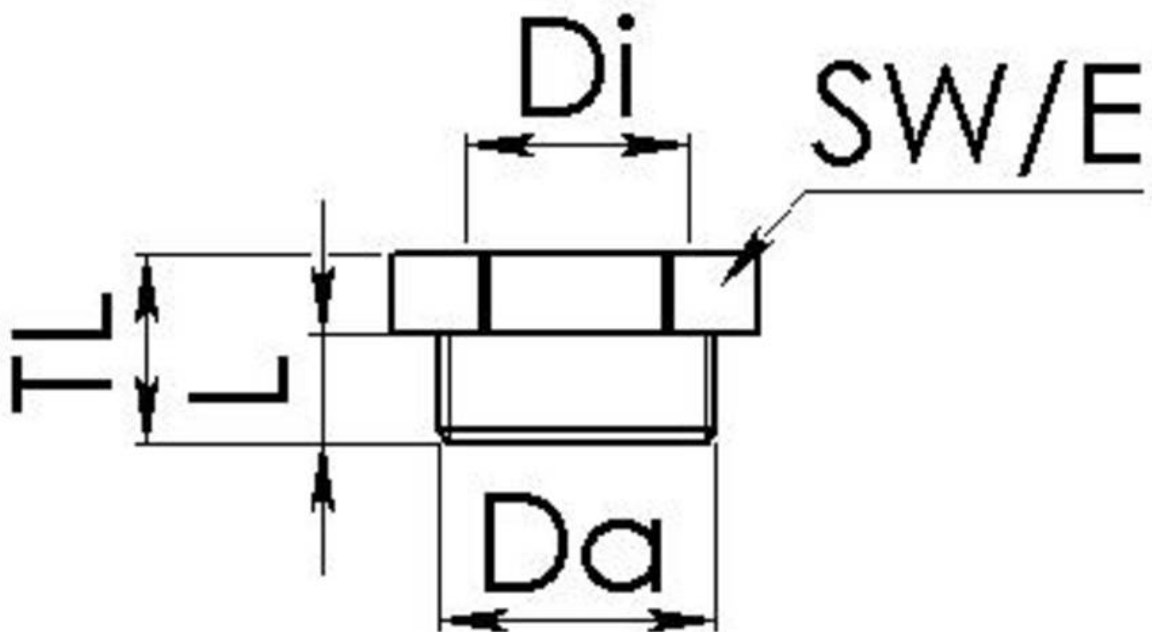
Your Contact:

WISKA Hoppmann GmbH

Kisdorfer Weg 28 · 24568 Kaltenkirchen · Germany

☎ +49-4191-508-0 · 📠 +49-4191-508-209

contact@wiska.de · www.wiska.com



Your Contact:

WISKA Hoppmann GmbH

Kisdorfer Weg 28 · 24568 Kaltenkirchen · Germany

☎ +49-4191-508-0 · 📠 +49-4191-508-209

contact@wiska.de · www.wiska.com