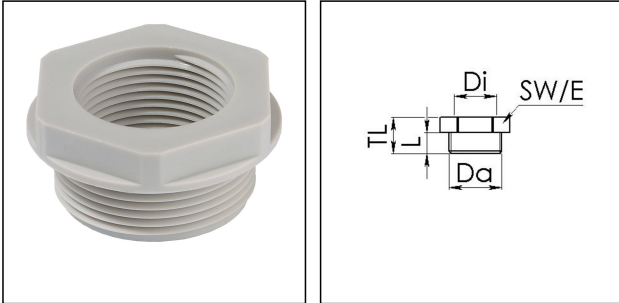


APM 42/40

Adaptor polyamide, RAL 7035, Pg42 / M40



Products may differ in size, colour and appearance to those shown. If you require further information or customisation, please contact us directly.



Material	Polyamide, fibre reinforced
Temp. range min	-40 °C
Temp. range max	100 °C
Glow wire test	650 °C
Thread type outer	PG
Ø outer thread	42
Length screw-in thread L	14 mm
Thread type inner	M
Ø inner thread	40
Lead inner	1,5
Total length TL	21 mm
Key width SW	60 mm
Collar diameter (E)	66 mm
Form	B
Product Color	RAL 7035
Order no. RAL 7035	10063673
Type	APM 42/40
Packing unit	5
ETIM-Classification	EC000938

Recommended accessories

MUG 42	10060678
ADR 42	10061427

Your Contact:

WISKA Hoppmann GmbH

Kisdorfer Weg 28 · 24568 Kaltenkirchen · Germany

☎ +49-4191-508-0 · 📠 +49-4191-508-209

contact@wiska.de · www.wiska.com

14.01.2021

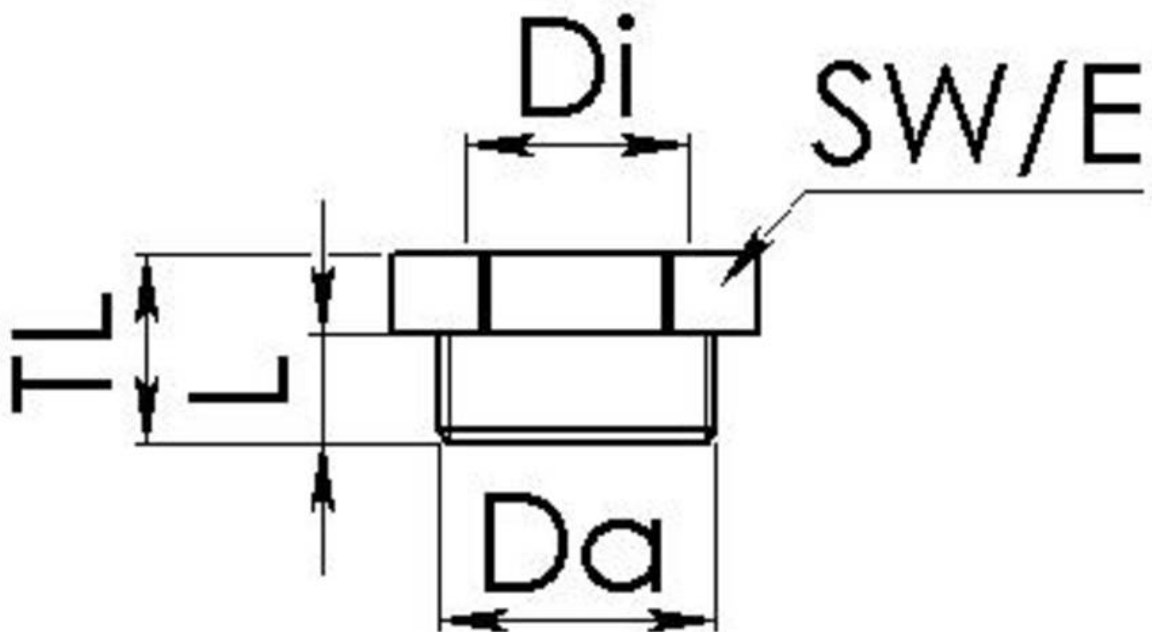
Your Contact:

WISKA Hoppmann GmbH

Kisdorfer Weg 28 · 24568 Kaltenkirchen · Germany

☎ +49-4191-508-0 · 📠 +49-4191-508-209

contact@wiska.de · www.wiska.com



Your Contact:

WISKA Hoppmann GmbH

Kisdorfer Weg 28 · 24568 Kaltenkirchen · Germany

☎ +49-4191-508-0 · 📠 +49-4191-508-209

contact@wiska.de · www.wiska.com