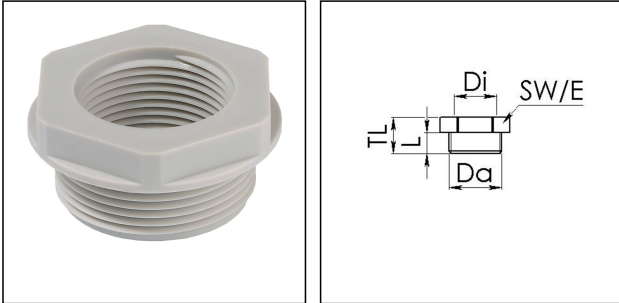


KRP 29/21

Reduction adaptor, polyamide, RAL 7035, Pg29 / Pg21



Products may differ in size, colour and appearance to those shown. If you require further information or customisation, please contact us directly.



Material	Polyamide, fibre reinforced
Temp. range min	-40 °C
Temp. range max	100 °C
Glow wire test	650 °C
Thread type outer	PG
Ø outer thread	29
Length screw-in thread L	12 mm
Thread type inner	PG
Ø inner thread	21
Total length TL	19 mm
Key width SW	42 mm
Collar diameter (E)	46 mm
Form	B
Product Color	RAL 7035
Order no. RAL 7035	10063618
Type	KRP 29/21
Packing unit	50
ETIM-Classification	EC000938

Recommended accessories

MUG 29	10060676
ADR 29	10061425

14.01.2021

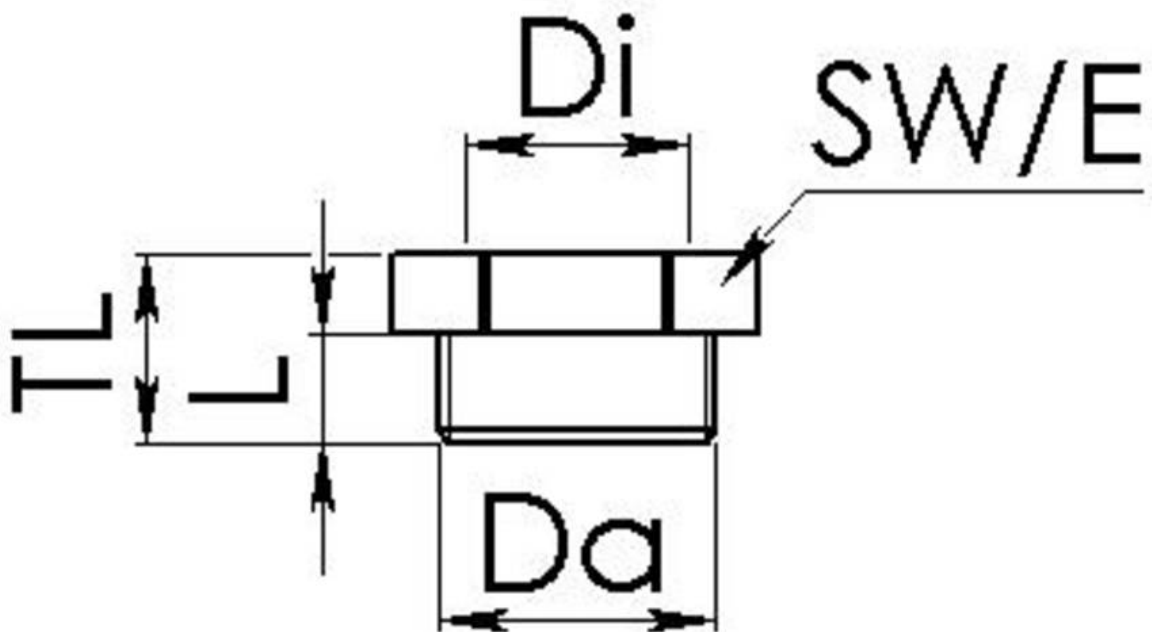
Your Contact:

WISKA Hoppmann GmbH

Kisdorfer Weg 28 · 24568 Kaltenkirchen · Germany

☎ +49-4191-508-0 · 📠 +49-4191-508-209

✉ contact@wiska.de · 🌐 www.wiska.com



Your Contact:

WISKA Hoppmann GmbH

Kisdorfer Weg 28 · 24568 Kaltenkirchen · Germany

☎ +49-4191-508-0 · 📠 +49-4191-508-209

contact@wiska.de · www.wiska.com