

EMT-F 16

Membrane spout, flame retardant, TPE, white, M16



Products may differ in size, colour and appearance to those shown. If you require further information or customisation, please contact us directly.



Material	TPE, flame-retardant
Temp. range min	-40 °C
Temp. range max	80 °C
Glow wire test	960 °C
Protection class	IP66
Ø Connection thread D	16
Length screw-in thread L	9,5 mm
Ø cable diameter min	1 mm
Ø cable diameter max	9 mm
External diameter ED	21 mm
Total length TL	11 mm
Ø Drilling	16,5 mm
Wall thickness S	2 mm
Product Color	white
Order no. RAL 9001	10063008
Type	EMT-F 16
Packing unit	100
ETIM-Classification	EC000451

14.01.2021

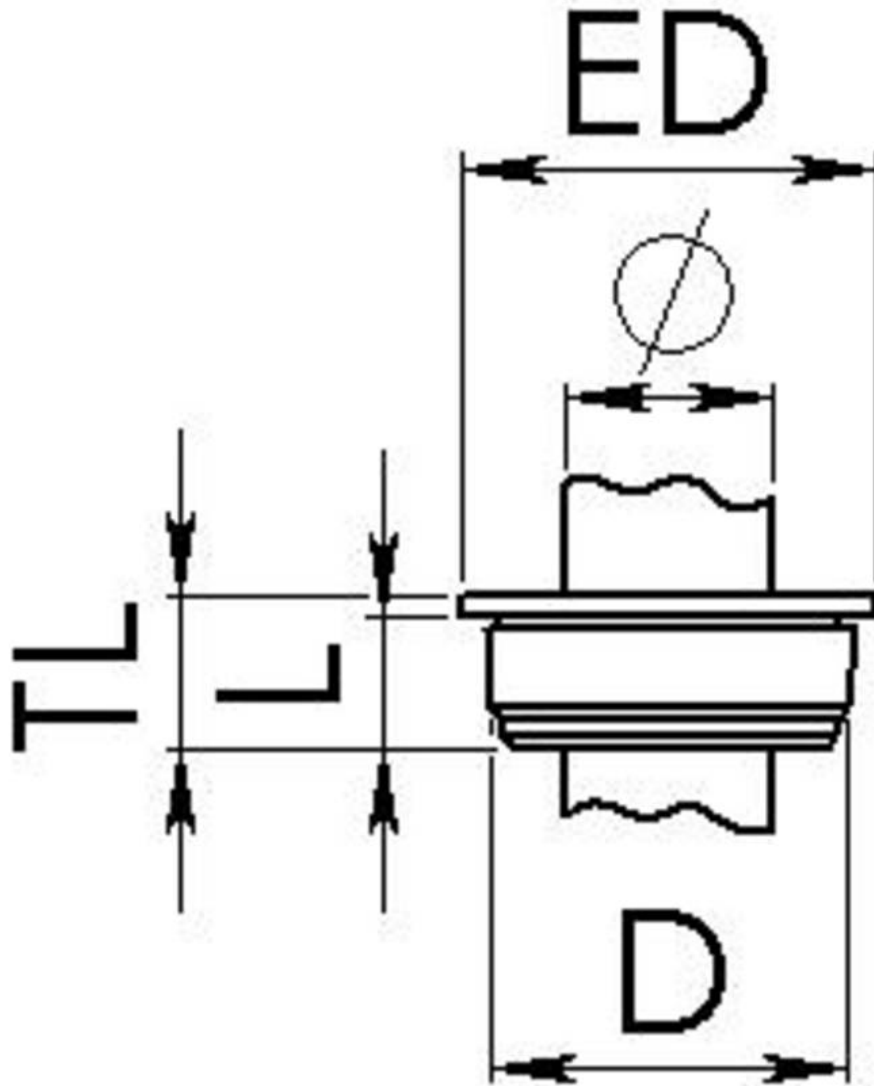
Your Contact:

WISKA Hoppmann GmbH

Kisdorfer Weg 28 · 24568 Kaltenkirchen · Germany

☎ +49-4191-508-0 · 📠 +49-4191-508-209

contact@wiska.de · www.wiska.com



Your Contact:

WISKA Hoppmann GmbH

Kisdorfer Weg 28 · 24568 Kaltenkirchen · Germany

☎ +49-4191-508-0 · 📠 +49-4191-508-209

contact@wiska.de · www.wiska.com