

ALPHA 630 Universal Circuit breaker kit 1x 3VT3 3+4-pole H=400 mm W=600 mm horizontal Installation

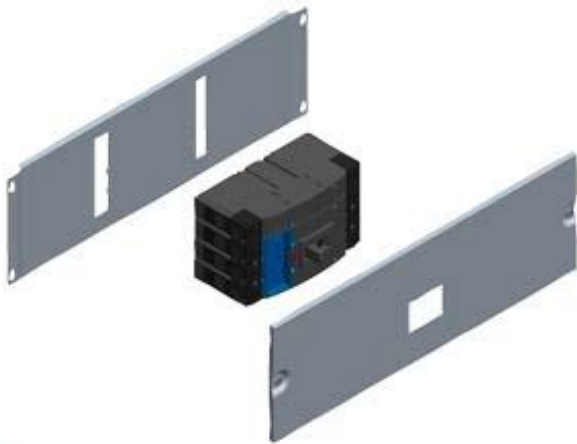


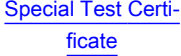



Figure similar

Versão	
nome da marca do produto	ALPHA UNIVERSAL
designação do produto	Kit de montagem Disjuntor compacto 3VT
Versão da placa de cobertura	Com corte
Componente do produto	
<ul style="list-style-type: none"> • Barra coletora de terra 	Não
<ul style="list-style-type: none"> • Placa de cobertura de plástico 	Sim
<ul style="list-style-type: none"> • placa de montagem 	Sim
Projeto mecânico	
altura	400 mm
largura	600 mm
posição de montagem	montagem na horizontal
Certificados	
indicadores de referência	
<ul style="list-style-type: none"> • segundo a DIN EN 61346-2 	Q
<ul style="list-style-type: none"> • segundo a IEC 81346-2:2009 	QA

General Product Approval	Declaration of Conformity	Test Certificates	other
	 EG-Konf.		

Outras informações

Information- and Downloadcenter (Catalogs, Brochures,...)

<http://www.siemens.com/lowvoltage/catalogs>

Industry Mall (Online ordering system)

<https://mall.industry.siemens.com/mall/pt/pt/Catalog/product?mlfb=8GK6755-4KK23>

Service&Support (Manuals, Certificates, Characteristics, FAQs,...)

<https://support.industry.siemens.com/cs/ww/pt/ps/8GK6755-4KK23>

Image database (product images, 2D dimension drawings, 3D models, device circuit diagrams, ...)

http://www.automation.siemens.com/bilddb/cax_en.aspx?mlfb=8GK6755-4KK23

CAX-Online-Generator

<http://www.siemens.com/cax>

Tender specifications

<http://www.siemens.com/specifications>