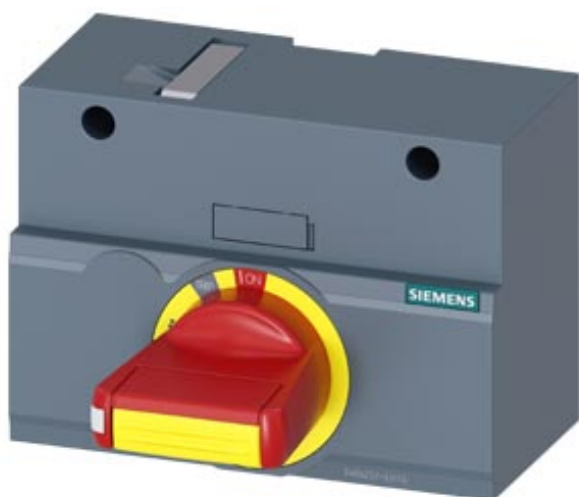


comando rotativo frontale OFF di emergenza IEC IP30/40 Accessori
per: 3VA1 250







Versione

marca del prodotto	SETRON
denominazione del prodotto	Accessori
esecuzione del prodotto	Comando rotativo frontale

Progettazione meccanica

Altezza	75 mm
Larghezza	105 mm
profondità	95 mm
peso netto	220 g

Certificati

General Product Approval	EMC	Declaration of Conformity	Test Certificates	Shipping Approval
Miscellaneous 	 RCM	 EG-Konf.	Type Test Certificates/Test Report	 LRS

other	
Manufacturer Declaration	Miscellaneous

Ulteriori informazioni

Information- and Downloadcenter (Cataloghi, Opuscoli,...)

<http://www.siemens.com/lowvoltage/catalogs>

Industry Mall (sistema di ordinazione Online)

<https://eb.automation.siemens.com/mall/en/WW/Catalog/Product/3VA9257-0EK15>

Service&Support (Manuali, Certificati, Caratteristiche, FAQ, ...)

<http://support.automation.siemens.com/WW/view/it/3VA9257-0EK15/all>

Banca dati immagini (foto prodotto, disegni dimensionali 2D, modelli 3D, schemi delle connessioni, ...)

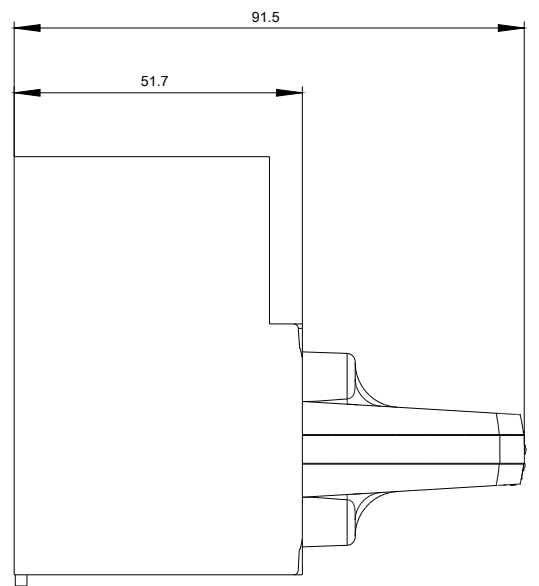
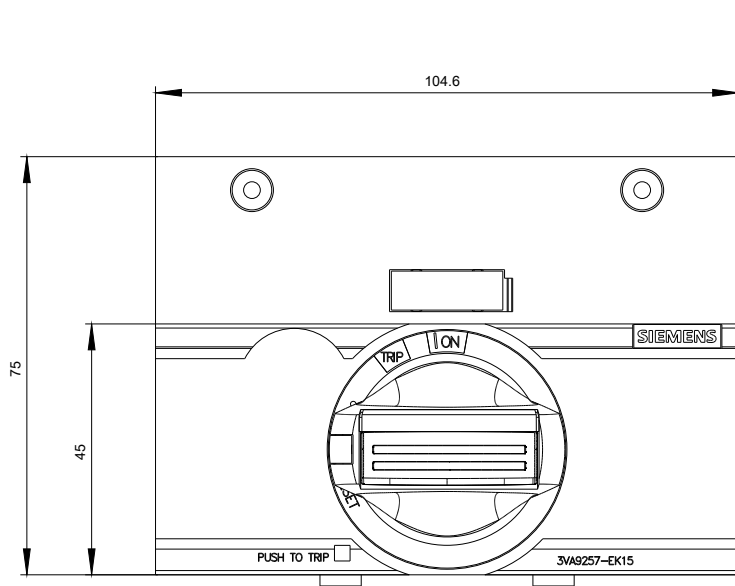
http://www.automation.siemens.com/bilddb/cax_en.aspx?mlfb=3VA9257-0EK15

CAX-Online-Generator

<http://www.siemens.com/cax>

Tender specifications

<http://www.siemens.com/specifications>



Ultima modifica:

08/08/2020