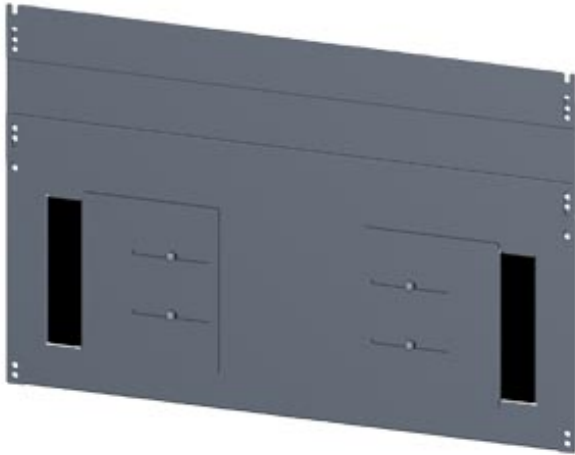


SIVACON, base, with side cable entry, T: 600 mm, W: 800 mm, zinc-plated



Model	
product brand name	SIVACON
Design of the product	With lateral cable entry
design of the surface	galvanized
Design of the product / EMC version	No
Product component	
• ventilation	No
Mechanical Design	
Width	800 mm
Depth	600 mm
net weight	6 200 g
Certificates	
• reference code / acc. to DIN EN 61346-2	U
• Reference code / acc. to DIN EN 81346-2	UC

Declaration of Conformity	Test Certificates	other
---------------------------	-------------------	-------



EG-Konf.

[Special Test Certificate](#)

[Miscellaneous](#)

Further information

**Information- and Downloadcenter (Catalogs, Brochures,...)**

<http://www.siemens.com/lowvoltage/catalogs>

**Industry Mall (Online ordering system)**

<https://mall.industry.siemens.com/mall/en/en/Catalog/product?mlfb=8MF1086-2UB51-2>

**Service&Support (Manuals, Certificates, Characteristics, FAQs,...)**

<https://support.industry.siemens.com/cs/ww/en/ps/8MF1086-2UB51-2>

**Image database (product images, 2D dimension drawings, 3D models, device circuit diagrams, ...)**

[http://www.automation.siemens.com/bilddb/cax\\_en.aspx?mlfb=8MF1086-2UB51-2](http://www.automation.siemens.com/bilddb/cax_en.aspx?mlfb=8MF1086-2UB51-2)

**CAX-Online-Generator**

<http://www.siemens.com/cax>

**Tender specifications**

<http://www.siemens.com/specifications>

