

Residual current operated circuit breaker, 2-pole, Type AC, In: 25 A, 30 mA, Un AC: 230 V



Model	
product brand name	SENTRON
Product designation	RCCB
Design of the product	Instantaneous
General technical data	
number of poles	2
Size of installation devices / acc. to DIN 43880	1
Protection against electrical shock	Finger and back-of-hand safe
Short-circuit current / of series fuse / maximum permissible	63 A
Short-circuit current rating	10 kA
Mechanical service life (switching cycles) / typical	10 000
Switching function / short-term delayed	No
overvoltage category	III
Supply voltage	
Operating current / at AC / rated value	25 A
Supply voltage	
• at AC / rated value	230 V

<ul style="list-style-type: none"> • for testing equipment / minimum 	195 V
Operating frequency	50 Hz
<ul style="list-style-type: none"> • Supply voltage frequency / rated value 	50 Hz

Protection class

Protection class IP	IP20, if the distribution board is installed, with connected conductors
---------------------	---

Switching capacity

Switching capacity current	
<ul style="list-style-type: none"> • acc. to EN 60898 / rated value 	0.5 kA
<ul style="list-style-type: none"> • according to IEC 61008-1 / rated value 	0.5 kA

Dissipation

<ul style="list-style-type: none"> • Power loss [W] / for rated value of the current / at AC / in hot operating state / per pole 	1 W
<ul style="list-style-type: none"> • power loss [W] / maximum 	2 W

Current

Tripping residual current / rated value	30 mA
Type of fault current	AC
Operating current	
<ul style="list-style-type: none"> • at 40 °C / rated value 	25 A
<ul style="list-style-type: none"> • at 45 °C / rated value 	25 A
<ul style="list-style-type: none"> • at 50 °C / rated value 	25 A
<ul style="list-style-type: none"> • at 55 °C / rated value 	25 A
<ul style="list-style-type: none"> • at 60 °C / rated value 	25 A
<ul style="list-style-type: none"> • at 65 °C / rated value 	23.3 A
<ul style="list-style-type: none"> • at 70 °C / rated value 	17.62 A

Product details

product feature / silicon-free	Yes
Product extension / can be installed / supplementary devices	Yes

Connections

connectable conductor cross-section / solid	
<ul style="list-style-type: none"> • minimum 	0.75 mm ²
<ul style="list-style-type: none"> • maximum 	35 mm ²
Connectable conductor cross-section / stranded	
<ul style="list-style-type: none"> • minimum 	0.75 mm ²
<ul style="list-style-type: none"> • maximum 	35 mm ²
Tightening torque / with screw-type terminals	
<ul style="list-style-type: none"> • minimum 	2.5 N·m
<ul style="list-style-type: none"> • maximum 	3 N·m
Position / of power supply cord	top or bottom

Mechanical Design





Height	90 mm
Width	36 mm
Depth	70 mm
installation depth	70 mm
number of width units	2
Mounting type	DIN rail (REG)
mounting position	any
net weight	201 g

Environmental conditions

Ambient temperature	
• minimum	-25 °C
• maximum	45 °C
Ambient temperature / during storage	
• minimum permissible	-40 °C
• maximum permissible	75 °C
Number of test cycles / for environmental testing / acc. to IEC 60068-2-30	28

Certificates

• reference code / acc. to DIN EN 61346-2	F
• Reference code / acc. to DIN EN 81346-2	F

General Product Approval	EMC	Declaration of Conformity	other
 CCC	 RCM	 EG-Konf.	 IMQ
Miscellaneous		Miscellaneous	

Railway

[Vibration and Shock](#)

[Confirmation](#)

Further information

Information- and Downloadcenter (Catalogs, Brochures,...)

<http://www.siemens.com/lowvoltage/catalogs>

Industry Mall (Online ordering system)

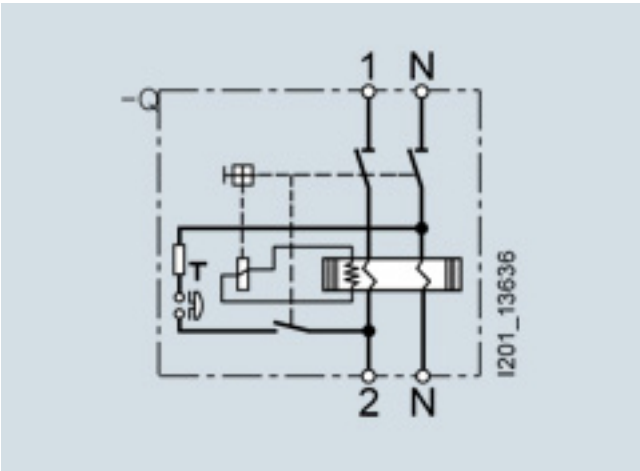
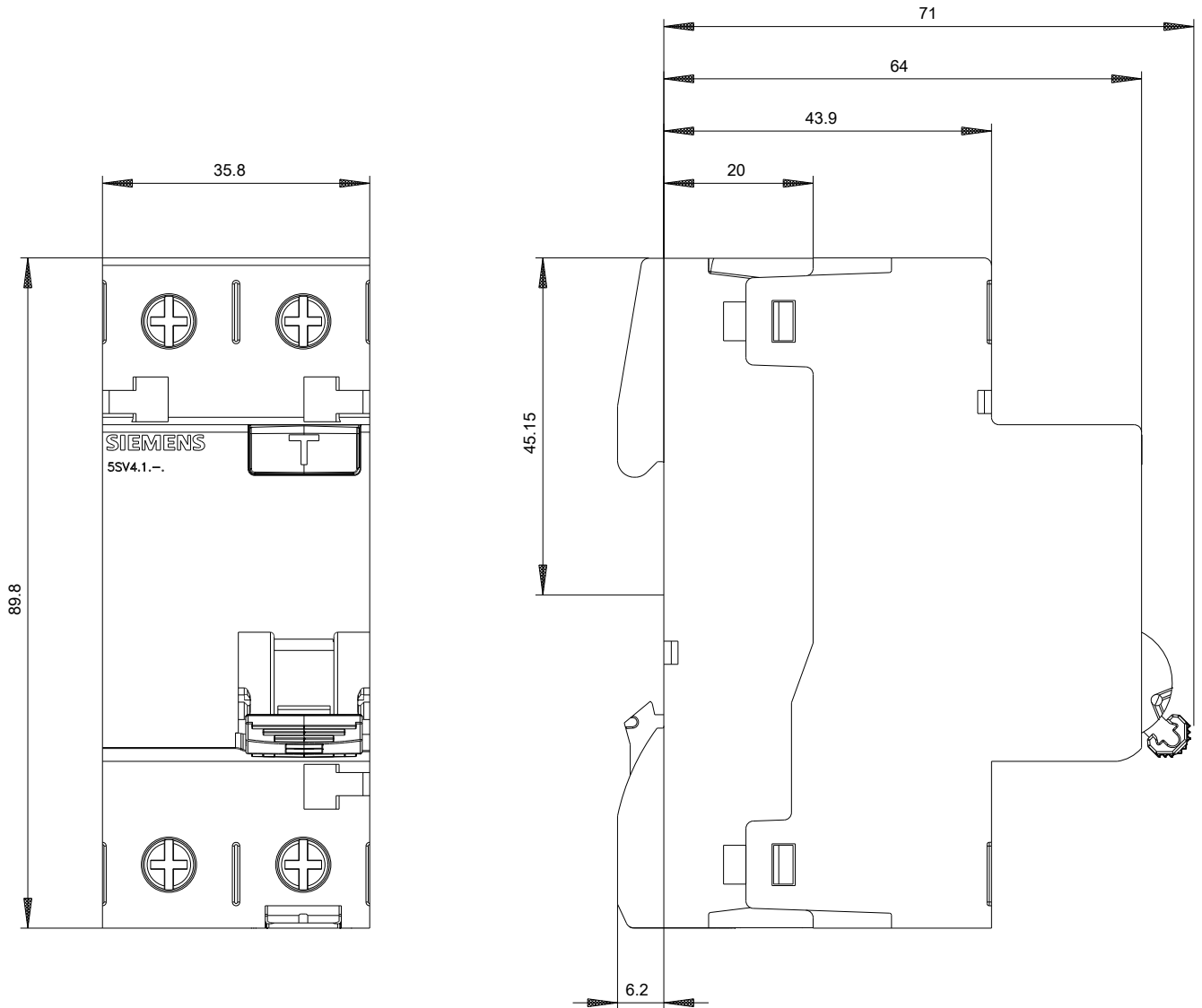
<https://mall.industry.siemens.com/mall/en/en/Catalog/product?mlfb=5SV4312-0>

Service&Support (Manuals, Certificates, Characteristics, FAQs,...)

<https://support.industry.siemens.com/cs/ww/en/ps/5SV4312-0>

Image database (product images, 2D dimension drawings, 3D models, device circuit diagrams, ...)

http://www.automation.siemens.com/bilddb/cax_en.aspx?mlfb=5SV4312-0



-CB

