

Inscription plate for illuminated pushbutton, round, milky with black font, with inscription: Zurück



product brand name	SIRIUS ACT
product designation	Insert label
product type designation	3SU1





### General technical data






<ul style="list-style-type: none"> <li>Shock resistance for railway applications acc. to DIN EN 61373</li> </ul>	Category 1, Class B
<ul style="list-style-type: none"> <li>Vibration resistance for railway applications acc. to DIN EN 61373</li> </ul>	Category 1, Class B

### Accessories

Material of accessory	Plastic
Mounting type of label	insert
Marking of inscription plate	Back
Shape of inscription plate	Round
Color of inscription plate	milky/black (label/lettering)

### Certificates/ approvals

General Product Approval			Declaration of Conformity	Test Certificates
				<a href="#">Miscellaneous</a> <a href="#">Type Test Certificates/Test Report</a>
CSA	UL		EG-Konf.	

Marine / Shipping					other
					<a href="#">Confirmation</a>
ABS	LRS	PRS	RINA	RMRS	

#### Further information

**Information- and Downloadcenter (Catalogs, Brochures,...)**

<https://www.siemens.com/ic10>

**Industry Mall (Online ordering system)**

<https://mall.industry.siemens.com/mall/en/en/Catalog/product?mlfb=3SU1900-0AB71-0AG0>

**Cax online generator**

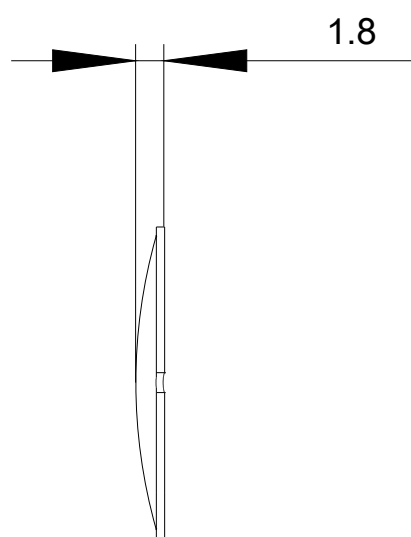
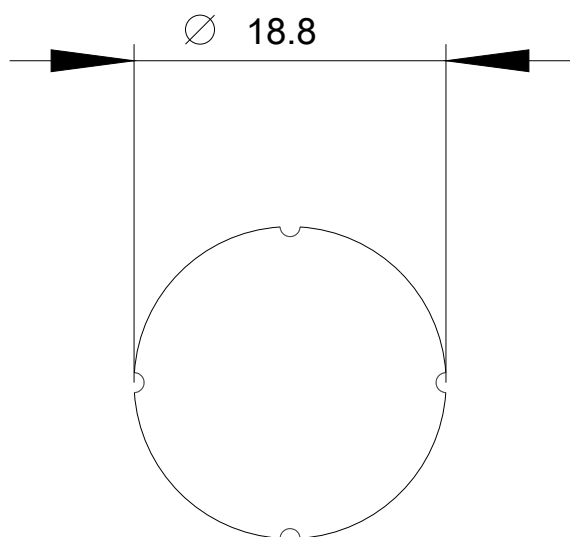
<http://support.automation.siemens.com/WW/CAXorder/default.aspx?lang=en&mlfb=3SU1900-0AB71-0AG0>

**Service&Support (Manuals, Certificates, Characteristics, FAQs,...)**

<https://support.industry.siemens.com/cs/ww/en/ps/3SU1900-0AB71-0AG0>

**Image database (product images, 2D dimension drawings, 3D models, device circuit diagrams, EPLAN macros, ...)**

[http://www.automation.siemens.com/bilddb/cax\\_de.aspx?mlfb=3SU1900-0AB71-0AG0&lang=en](http://www.automation.siemens.com/bilddb/cax_de.aspx?mlfb=3SU1900-0AB71-0AG0&lang=en)



last modified:

08/29/2020