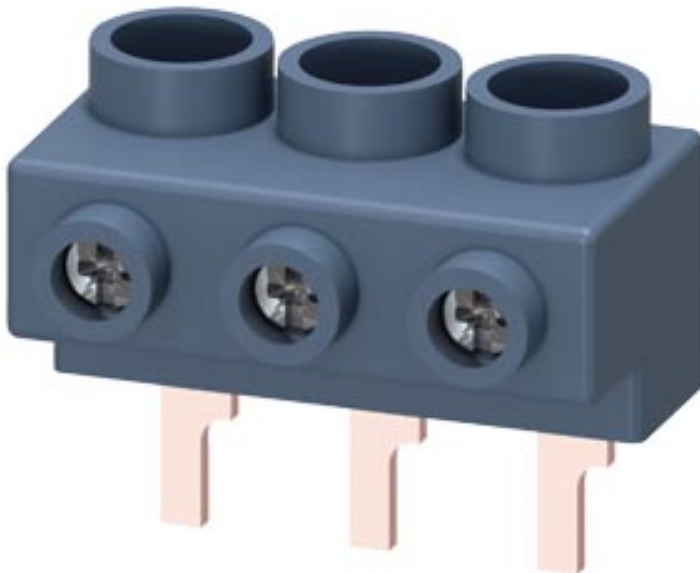


3-phase supply terminal for 3-phase busbar for size S0 and S00 connection from top Pin shape connections



General technical data		
Product brand name		SIRIUS
Product designation		Three-phase feeder terminal
Size of the circuit-breaker		S00, S0
Protection class IP on the front		IP20
Insulation voltage with degree of pollution 3 at AC rated value	V	690
Ambient temperature		
• during storage	°C	-50 ... +80
• during operation	°C	-20 ... +60
Ampacity maximum	A	63
Installation/ mounting/ dimensions		
Width	mm	44
Height	mm	24
Depth	mm	25
Connections/ Terminals		
Type of electrical connection for main current circuit		screw-type terminals
Type of connectable conductor cross-sections		

- for main contacts
 - solid
 - stranded
 - finely stranded
 - with core end processing
- at AWG conductors for main contacts

	1x (2.5 ... 25 mm ²)
	1x (2.5 ... 25 mm ²)
	1x (4 ... 16 mm ²)
	1x (12 ... 4)

Certificates/ approvals

Certificate of suitability

CE / UL / CSA / CCC

General Product Approval

Declaration of Conformity

Shipping Ap-
proval



CSA



UL



EG-Konf.

[Miscellaneous](#)



ABS

Shipping Ap-
proval

other



RMRS

[Confirmation](#)



VDE

Further information

Information- and Downloadcenter (Catalogs, Brochures,...)

<https://www.siemens.com/ic10>

Industry Mall (Online ordering system)

<https://mall.industry.siemens.com/mall/en/en/Catalog/product?mlfb=3RV1915-5A>

Cax online generator

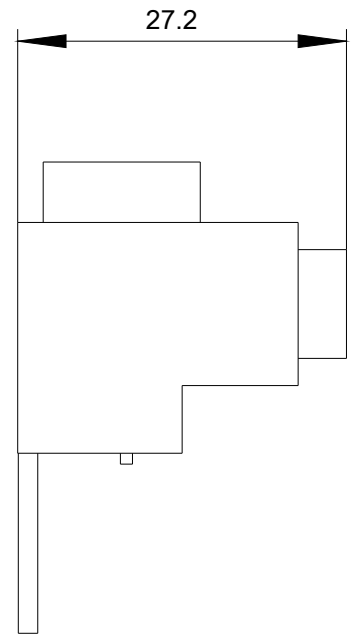
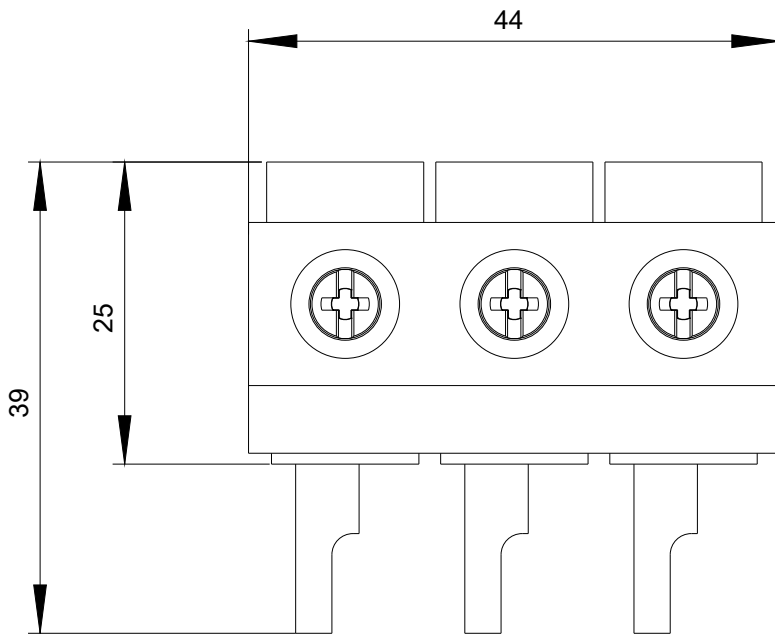
<http://support.automation.siemens.com/WW/CAXorder/default.aspx?lang=en&mlfb=3RV1915-5A>

Service&Support (Manuals, Certificates, Characteristics, FAQs,...)

<https://support.industry.siemens.com/cs/ww/en/ps/3RV1915-5A>

Image database (product images, 2D dimension drawings, 3D models, device circuit diagrams, EPLAN macros, ...)

http://www.automation.siemens.com/bilddb/cax_de.aspx?mlfb=3RV1915-5A&lang=en



last modified:

06/08/2020