



power contactor, AC-3 51 A, 22 kW / 400 V 2 NO + 2 NC, 24 V DC with varistor, 3-pole, size S2, spring-loaded terminal, captive auxiliary switch suitable for 2A PLC outputs

| | |
|---|---------------------------------------|
| product brand name | SIRIUS |
| product designation | Coupling contactor |
| product type designation | 3RT2 |
| General technical data | |
| size of contactor | S2 |
| product extension | |
| <ul style="list-style-type: none"> function module for communication auxiliary switch | No No |
| power loss [W] for rated value of the current | |
| <ul style="list-style-type: none"> at AC in hot operating state at AC in hot operating state per pole without load current share typical | 12 W 4 W 1 W |
| insulation voltage | |
| <ul style="list-style-type: none"> of main circuit with degree of pollution 3 rated value of auxiliary circuit with degree of pollution 3 rated value | 690 V 690 V |
| surge voltage resistance | |
| <ul style="list-style-type: none"> of main circuit rated value of auxiliary circuit rated value | 6 kV 6 kV |
| maximum permissible voltage for safe isolation between coil and main contacts according to EN 60947-1 | 400 V |
| shock resistance at rectangular impulse | |
| <ul style="list-style-type: none"> at DC | 6.1g / 5 ms, 3.7g / 10 ms |
| shock resistance with sine pulse | |
| <ul style="list-style-type: none"> at DC | 9.6g / 5 ms, 5.8g / 10 ms |
| mechanical service life (switching cycles) | |
| <ul style="list-style-type: none"> of contactor typical of the contactor with added electronically optimized auxiliary switch block typical of the contactor with added auxiliary switch block typical | 10 000 000 5 000 000 10 000 000 |
| reference code according to IEC 81346-2 | Q |
| Substance Prohibitance (Date) | 10/01/2014 |
| Ambient conditions | |
| installation altitude at height above sea level maximum | 2 000 m |
| ambient temperature | |
| <ul style="list-style-type: none"> during operation during storage | -25 ... +60 °C -55 ... +80 °C |
| relative humidity minimum | 10 % |
| relative humidity at 55 °C according to IEC 60068-2-30 maximum | 95 % |

Main circuit

| | |
|--|--------------------|
| number of poles for main current circuit | 3 |
| number of NO contacts for main contacts | 3 |
| operating voltage | |
| • at AC-3 rated value maximum | 690 V |
| • at AC-3e rated value maximum | 690 V |
| operational current | |
| • at AC-1 at 400 V at ambient temperature 40 °C rated value | 70 A |
| • at AC-1 | |
| — up to 690 V at ambient temperature 40 °C rated value | 70 A |
| — up to 690 V at ambient temperature 60 °C rated value | 60 A |
| • at AC-3 | |
| — at 400 V rated value | 51 A |
| — at 500 V rated value | 51 A |
| — at 690 V rated value | 24 A |
| • at AC-3e | |
| — at 400 V rated value | 51 A |
| — at 500 V rated value | 51 A |
| — at 690 V rated value | 24 A |
| • at AC-4 at 400 V rated value | 41 A |
| • at AC-5a up to 690 V rated value | 61.6 A |
| • at AC-5b up to 400 V rated value | 41.5 A |
| • at AC-6a | |
| — up to 230 V for current peak value n=20 rated value | 43.2 A |
| — up to 400 V for current peak value n=20 rated value | 43.2 A |
| — up to 500 V for current peak value n=20 rated value | 43.2 A |
| — up to 690 V for current peak value n=20 rated value | 24 A |
| • at AC-6a | |
| — up to 230 V for current peak value n=30 rated value | 28.8 A |
| — up to 400 V for current peak value n=30 rated value | 28.8 A |
| — up to 500 V for current peak value n=30 rated value | 28.8 A |
| — up to 690 V for current peak value n=30 rated value | 24 A |
| minimum cross-section in main circuit at maximum AC-1 rated value | 25 mm ² |
| operational current for approx. 200000 operating cycles at AC-4 | |
| • at 400 V rated value | 24 A |
| • at 690 V rated value | 20 A |
| operational current | |
| • at 1 current path at DC-1 | |
| — at 24 V rated value | 55 A |
| — at 110 V rated value | 4.5 A |
| — at 220 V rated value | 1 A |
| — at 440 V rated value | 0.4 A |
| — at 600 V rated value | 0.25 A |
| • with 2 current paths in series at DC-1 | |
| — at 24 V rated value | 55 A |
| — at 110 V rated value | 45 A |
| — at 220 V rated value | 5 A |
| — at 440 V rated value | 1 A |
| — at 600 V rated value | 0.8 A |
| • with 3 current paths in series at DC-1 | |

| | |
|--|---|
| <ul style="list-style-type: none"> — at 24 V rated value — at 110 V rated value — at 220 V rated value — at 440 V rated value — at 600 V rated value | 55 A 55 A 45 A 2.9 A 1.4 A |
| <ul style="list-style-type: none"> ● at 1 current path at DC-3 at DC-5 <ul style="list-style-type: none"> — at 24 V rated value — at 110 V rated value — at 220 V rated value — at 440 V rated value — at 600 V rated value | 35 A 2.5 A 1 A 0.1 A 0.06 A |
| <ul style="list-style-type: none"> ● with 2 current paths in series at DC-3 at DC-5 <ul style="list-style-type: none"> — at 24 V rated value — at 110 V rated value — at 220 V rated value — at 440 V rated value — at 600 V rated value | 55 A 25 A 5 A 0.27 A 0.16 A |
| <ul style="list-style-type: none"> ● with 3 current paths in series at DC-3 at DC-5 <ul style="list-style-type: none"> — at 24 V rated value — at 110 V rated value — at 220 V rated value — at 440 V rated value — at 600 V rated value | 55 A 55 A 25 A 0.6 A 0.35 A |
| operating power <ul style="list-style-type: none"> ● at AC-2 at 400 V rated value ● at AC-3 <ul style="list-style-type: none"> — at 230 V rated value — at 400 V rated value — at 500 V rated value — at 690 V rated value ● at AC-3e <ul style="list-style-type: none"> — at 400 V rated value — at 500 V rated value — at 690 V rated value | 22 kW 15 kW 22 kW 30 kW 22 kW 22 kW 30 kW 22 kW |
| operating power for approx. 200000 operating cycles at AC-4 <ul style="list-style-type: none"> ● at 400 V rated value ● at 690 V rated value | 12.6 kW 18.2 kW |
| operating apparent power at AC-6a <ul style="list-style-type: none"> ● up to 230 V for current peak value n=20 rated value ● up to 400 V for current peak value n=20 rated value ● up to 500 V for current peak value n=20 rated value ● up to 690 V for current peak value n=20 rated value | 17.2 kVA 29.9 kVA 37.4 kVA 28.6 kVA |
| operating apparent power at AC-6a <ul style="list-style-type: none"> ● up to 230 V for current peak value n=30 rated value ● up to 400 V for current peak value n=30 rated value ● up to 500 V for current peak value n=30 rated value ● up to 690 V for current peak value n=30 rated value | 11.4 kVA 19.9 kVA 24.9 kVA 28.6 kVA |
| short-time withstand current in cold operating state up to 40 °C <ul style="list-style-type: none"> ● limited to 1 s switching at zero current maximum ● limited to 5 s switching at zero current maximum ● limited to 10 s switching at zero current maximum ● limited to 30 s switching at zero current maximum ● limited to 60 s switching at zero current maximum | 937 A; Use minimum cross-section acc. to AC-1 rated value 697 A; Use minimum cross-section acc. to AC-1 rated value 468 A; Use minimum cross-section acc. to AC-1 rated value 282 A; Use minimum cross-section acc. to AC-1 rated value 229 A; Use minimum cross-section acc. to AC-1 rated value |
| no-load switching frequency <ul style="list-style-type: none"> ● at DC | 1 500 1/h |
| operating frequency <ul style="list-style-type: none"> ● at AC-1 maximum ● at AC-2 maximum ● at AC-3 maximum | 1 000 1/h 600 1/h 800 1/h |

| | |
|---|---|
| <ul style="list-style-type: none"> • at AC-3e maximum • at AC-4 maximum | 800 1/h 250 1/h |
| Control circuit/ Control | |
| type of voltage of the control supply voltage | DC |
| control supply voltage at DC | |
| <ul style="list-style-type: none"> • rated value | 24 V |
| operating range factor control supply voltage rated value of magnet coil at DC | |
| <ul style="list-style-type: none"> • initial value • full-scale value | 0.8 1.2 |
| design of the surge suppressor | with varistor |
| inrush current peak | 2.6 A |
| duration of inrush current peak | 50 µs |
| locked-rotor current mean value | 0.9 A |
| locked-rotor current peak | 2.1 A |
| duration of locked-rotor current | 230 ms |
| holding current mean value | 40 mA |
| closing power of magnet coil at DC | 21.5 W |
| holding power of magnet coil at DC | 1 W |
| closing delay | |
| <ul style="list-style-type: none"> • at DC | 35 ... 80 ms |
| opening delay | |
| <ul style="list-style-type: none"> • at DC | 30 ... 55 ms |
| arcing time | 10 ... 20 ms |
| control version of the switch operating mechanism | Standard A1 - A2 |
| Auxiliary circuit | |
| number of NC contacts for auxiliary contacts instantaneous contact | 2 |
| number of NO contacts for auxiliary contacts instantaneous contact | 2 |
| operational current at AC-12 maximum | 10 A |
| operational current at AC-15 | |
| <ul style="list-style-type: none"> • at 230 V rated value • at 400 V rated value • at 500 V rated value • at 690 V rated value | 6 A 3 A 2 A 1 A |
| operational current at DC-12 | |
| <ul style="list-style-type: none"> • at 24 V rated value • at 48 V rated value • at 60 V rated value • at 110 V rated value • at 125 V rated value • at 220 V rated value • at 600 V rated value | 10 A 6 A 6 A 3 A 2 A 1 A 0.15 A |
| operational current at DC-13 | |
| <ul style="list-style-type: none"> • at 24 V rated value • at 48 V rated value • at 60 V rated value • at 110 V rated value • at 125 V rated value • at 220 V rated value • at 600 V rated value | 6 A 2 A 2 A 1 A 0.9 A 0.3 A 0.1 A |
| contact reliability of auxiliary contacts | 1 faulty switching per 100 million (17 V, 1 mA) |
| UL/CSA ratings | |
| full-load current (FLA) for 3-phase AC motor | |
| <ul style="list-style-type: none"> • at 480 V rated value • at 600 V rated value | 52 A 52 A |
| yielded mechanical performance [hp] | |
| <ul style="list-style-type: none"> • for single-phase AC motor <ul style="list-style-type: none"> — at 110/120 V rated value | 3 hp |

| | |
|---|---|
| <ul style="list-style-type: none"> — at 230 V rated value • for 3-phase AC motor <ul style="list-style-type: none"> — at 200/208 V rated value — at 220/230 V rated value — at 460/480 V rated value — at 575/600 V rated value | <p>10 hp</p> <p>15 hp</p> <p>15 hp</p> <p>40 hp</p> <p>50 hp</p> |
| contact rating of auxiliary contacts according to UL | A600 / Q600 |
| Short-circuit protection | |
| design of the fuse link | |
| <ul style="list-style-type: none"> • for short-circuit protection of the main circuit <ul style="list-style-type: none"> — with type of coordination 1 required — with type of assignment 2 required • for short-circuit protection of the auxiliary switch required | <p>gG: 160 A (690 V, 100 kA), aM: 80 A (690 V, 100 kA), BS88: 125 A (415 V, 80 kA)</p> <p>gG: 80A (690V,100kA), aM: 50A (690V,100kA), BS88: 63A (415V,80kA)</p> <p>gG: 10 A (500 V, 1 kA)</p> |
| Installation/ mounting/ dimensions | |
| mounting position | +/-180° rotation possible on vertical mounting surface; can be tilted forward and backward by +/- 22.5° on vertical mounting surface |
| fastening method | screw and snap-on mounting onto 35 mm standard mounting rail according to DIN EN 60715 |
| <ul style="list-style-type: none"> • side-by-side mounting | Yes |
| height | 114 mm |
| width | 55 mm |
| depth | 178 mm |
| required spacing | |
| <ul style="list-style-type: none"> • with side-by-side mounting <ul style="list-style-type: none"> — forwards — upwards — downwards — at the side • for grounded parts <ul style="list-style-type: none"> — forwards — upwards — at the side — downwards • for live parts <ul style="list-style-type: none"> — forwards — upwards — downwards — at the side | <p>10 mm</p> <p>10 mm</p> <p>10 mm</p> <p>0 mm</p> <p>10 mm</p> <p>10 mm</p> <p>6 mm</p> <p>10 mm</p> <p>10 mm</p> <p>10 mm</p> <p>6 mm</p> |
| Connections/ Terminals | |
| type of electrical connection | |
| <ul style="list-style-type: none"> • for main current circuit • for auxiliary and control circuit • at contactor for auxiliary contacts • of magnet coil | <p>screw-type terminals</p> <p>spring-loaded terminals</p> <p>Spring-type terminals</p> <p>Spring-type terminals</p> |
| type of connectable conductor cross-sections | |
| <ul style="list-style-type: none"> • for main contacts <ul style="list-style-type: none"> — solid or stranded — finely stranded with core end processing • at AWG cables for main contacts | <p>2x (1 ... 35 mm²), 1x (1 ... 50 mm²)</p> <p>2x (1 ... 25 mm²), 1x (1 ... 35 mm²)</p> <p>2x (18 ... 2), 1x (18 ... 1)</p> |
| connectable conductor cross-section for main contacts | |
| <ul style="list-style-type: none"> • finely stranded with core end processing | 1 ... 35 mm ² |
| connectable conductor cross-section for auxiliary contacts | |
| <ul style="list-style-type: none"> • solid or stranded • finely stranded with core end processing • finely stranded without core end processing | <p>0.5 ... 2.5 mm²</p> <p>0.5 ... 1.5 mm²</p> <p>0.5 ... 2.5 mm²</p> |
| type of connectable conductor cross-sections | |
| <ul style="list-style-type: none"> • for auxiliary contacts | |

| | |
|--|-----------------------------------|
| — solid or stranded | 2x (0.5 ... 2.5 mm ²) |
| — finely stranded with core end processing | 2x (0.5 ... 1.5 mm ²) |
| — finely stranded without core end processing | 2x (0.5 ... 2.5 mm ²) |
| • at AWG cables for auxiliary contacts | 2x (20 ... 14) |
| AWG number as coded connectable conductor cross section | |
| • for main contacts | 18 ... 1 |
| • for auxiliary contacts | 20 ... 14 |

Safety related data

| | |
|--|--|
| product function | |
| • mirror contact according to IEC 60947-4-1 | Yes |
| • positively driven operation according to IEC 60947-5-1 | No |
| B10 value with high demand rate according to SN 31920 | 1 000 000 |
| proportion of dangerous failures | |
| • with low demand rate according to SN 31920 | 40 % |
| • with high demand rate according to SN 31920 | 73 % |
| failure rate [FIT] with low demand rate according to SN 31920 | 100 FIT |
| protection class IP on the front according to IEC 60529 | IP20 |
| touch protection on the front according to IEC 60529 | finger-safe, for vertical contact from the front |
| suitability for use | |
| • safety-related switching OFF | Yes |

Certificates/ approvals

General Product Approval



[Confirmation](#)



[KC](#)



| | | | | |
|-----|---------------------------------------|---------------------------|-------------------|--|
| EMC | Functional Safety/Safety of Machinery | Declaration of Conformity | Test Certificates | |
|-----|---------------------------------------|---------------------------|-------------------|--|



[Type Examination Certificate](#)

[UK Declaration of Conformity](#)



EG-Konf.

[Special Test Certificate](#)

[Type Test Certificates/Test Report](#)

Marine / Shipping



| | | |
|-------------------|-------|---------|
| Marine / Shipping | other | Railway |
|-------------------|-------|---------|



[Confirmation](#)

[Vibration and Shock](#)

Further information

Information- and Downloadcenter (Catalogs, Brochures,...)
<https://www.siemens.com/ic10>

Industry Mall (Online ordering system)

<https://mall.industry.siemens.com/mall/en/en/Catalog/product?mlfb=3RT2036-3KB44-3MA0>

Cax online generator

<http://support.automation.siemens.com/WW/CAXorder/default.aspx?lang=en&mlfb=3RT2036-3KB44-3MA0>

Service&Support (Manuals, Certificates, Characteristics, FAQs,...)

<https://support.industry.siemens.com/cs/ww/en/ps/3RT2036-3KB44-3MA0>

Image database (product images, 2D dimension drawings, 3D models, device circuit diagrams, EPLAN macros, ...)

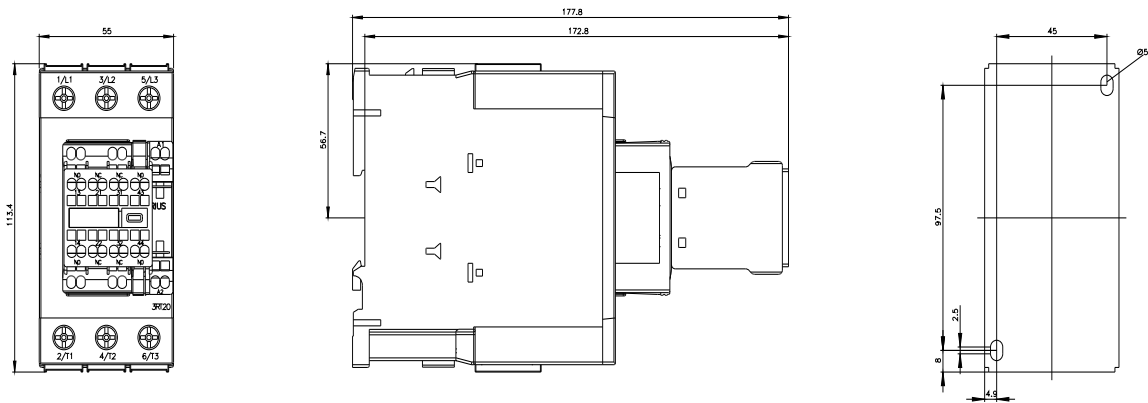
http://www.automation.siemens.com/bilddb/cax_de.aspx?mlfb=3RT2036-3KB44-3MA0&lang=en

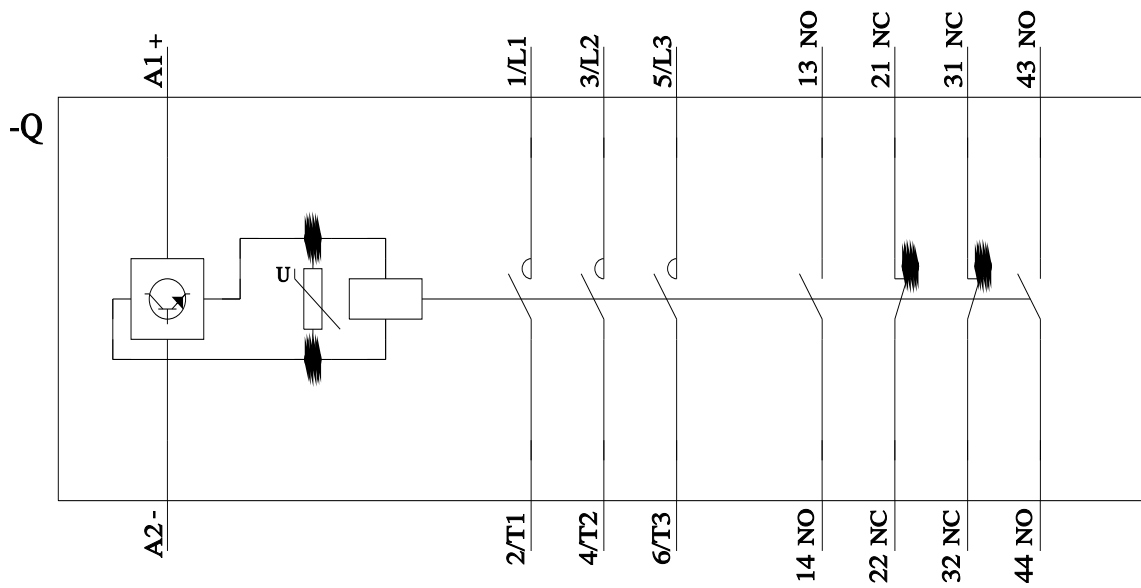
Characteristic: Tripping characteristics, I^t, Let-through current

<https://support.industry.siemens.com/cs/ww/en/ps/3RT2036-3KB44-3MA0/char>

Further characteristics (e.g. electrical endurance, switching frequency)

<http://www.automation.siemens.com/bilddb/index.aspx?view=Search&mlfb=3RT2036-3KB44-3MA0&objecttype=14&gridview=view1>





last modified:

2/15/2022 