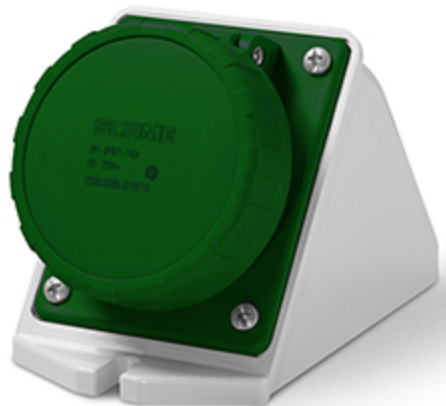


## Product Technical Sheet

21 feb 2022 17:05



# 535.M016114 BASE MURAL

16A 2P 3h 20-25V 40-50V 400Hz Bornes con tornillo

Product Approvals

| TECHDATA                     |                     | STANDARDS AND LAWS |   |
|------------------------------|---------------------|--------------------|---|
| Serie comercial              | Serie IEC309        | EN 60309-1 (1999)  | [European Standard] Plugs, socket-outlets and couplers for industrial purposes. Part 1: General requirements  |
| Tipo de producto             | BASE MURAL          | EN 60309-2 (1999)  | [European Standard] Plugs, socket-outlets and couplers for industrial purposes. Part 2: Dimensional interchangeability requirements for pin and contact-tube accessories of harmonized configurations |
| Descripción                  | BASE MURAL          |                    |   |
| Tipo de instalación          | MURAL               |                    |   |
| Intensidad nominal           | 16A                 |                    |   |
| Polos                        | 2P                  |                    |   |
| Posición de hora             | 3h                  |                    |   |
| Tensión nominal (range)      | 0-50V               |                    |   |
| Tensión nominal              | 40-50V              |                    |   |
| Tensión nominal              | 20-25V              |                    |   |
| Frecuencia nominal           | 400Hz               |                    |   |
| Color                        | VERDE               |                    |   |
| Material                     | TERMOPLÁSTICO       |                    |   |
| Grado de protección          | Watertight          |                    |   |
| Grado de protección IP       | IP66/IP67           |                    |   |
| Tipos de salidas disponibles | INCLINADA           |                    |   |
| Bornes                       | Bornes con tornillo |                    |   |
| Material de los contactos    | CuZn (latón)        |                    |   |

Salida del cable

M20X1,5