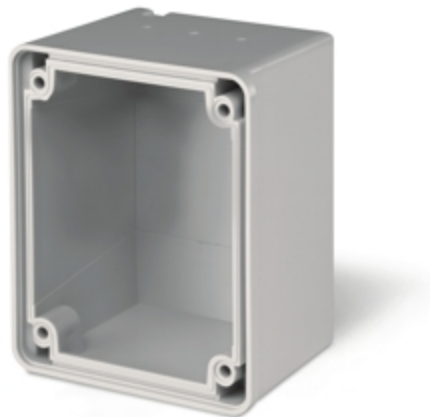


Product Technical Sheet

21 Feb 2022 17:00



570.M0032

SURFACE MOUNTING BOX

STRAIGHT 32A M25X1,5 84x106mm

Product Approvals

TECHDATA		STANDARDS AND LAWS	
Commercial series	DOMO Series	EN 60309-1 (1999)	[European Standard] Plugs, socket-outlets and couplers for industrial purposes. Part 1: General requirements
Type of product	Accessory	DIRECTIVE LOW VOLTAGE 2014/35 /UE	[European Directives] Low Voltage Directive
Synthetical description	SURFACE MOUNTING BOX		
Material	THERMOPLASTIC		
Types of available outlets	STRAIGHT		
Cable entry	M25X1,5		
Rated current	32A		
Suitable for	84x106mm		
Colour	GREY		