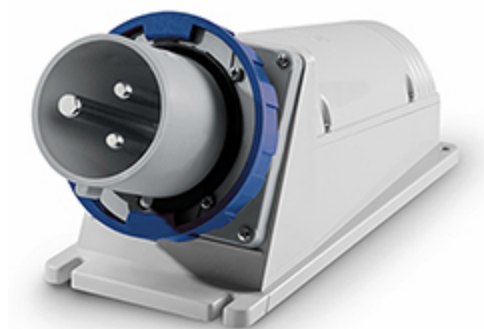


# 245.M12593

## SURFACE MOUNT. APPLIANCE INLET

125A 2P+E 6h 200-250V 50Hz 60Hz Screw terminals



Product Approvals

TECHDATA		STANDARDS AND LAWS	
Type of product	SURFACE MOUNT. APPLIANCE INLET	EN 60309-1 (1999)	[European Standard] Plugs, socket-outlets and couplers for industrial purposes. Part 1: General requirements
Commercial series	OPTIMA Series	EN 60309-2 (1999)	[European Standard] Plugs, socket-outlets and couplers for industrial purposes. Part 2: Dimensional interchangeability requirements for pin and contact-tube accessories of harmonized configurations
Synthetical description	SURFACE MOUNT. APPLIANCE INLET		
Mounting version	SURFACE MOUNTING	DIRECTIVE LOW VOLTAGE 2014/35 /UE	[European Directives] Low Voltage Directive
Rated current	125A		
Poles	2P+E		
Hour position	6h		
Rated voltage (range)	200-250V		
Rated voltage	200-250V		
Working frequency	50Hz		
Working frequency	60Hz		
Colour	BLUE		
Material	THERMOPLASTIC		
Protection degree	Watertight		
Protection degree IP	IP66/IP67/IP69		
Protection degree IK	IK08		
Types of available outlets	ANGLED		
Terminals	Screw terminals		

Contact material	CuZn (brass)
Surface treatment contacts	Nickel-plated
Cable entry	M63X1,5