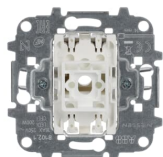


PRODUCT-DETAILS

8102.1

Switch 2-way Two-way switch with LED exchangeable



Informações gerais

Tipo de produto alargado	8102.1
ID do produto	2CLA810210A1001
EAN	8427238025186
Descrição do catálogo	Switch 2-way Two-way switch with LED exchangeable
Descrição longa	Rated voltage: 110 - 250 Vac Rated current: 16AX Screwless terminals Included: fixing claws Optional: locator LED lamp 6192 BL (230 Vac) Rocker code: 8501, 8501.2, 8501.3, 8501.4, 8601, 8601.3, 8401, 8401.2, 8401.3, 8401.4, 8201, 8201.2, 8201.3, 8201.4, 8201.9, 5501, 5501.2, 5501.3, 5501.4 & 5501.5

Installation

Instruções e Manuais	2CLX810109A1001
----------------------	-----------------

Technical

Ficha de dados, informação técnica	9AKK107046A0356
Function	Function lighting: Orientation

Tensão nominal (U _r)	250 V
Corrente nominal (I _n)	16 A
Maximum Switching Current	Fluorescent Lamps 16
Number of Rocker Switches	1
Design Range	Platform 8100 Alba Sky Niessen
Wiring Configuration	Two-way switch
Actuator Type	Rocker/button
Connection Type	Plug Clamp
Lamp Type	LED exchangeable
Tipo de apoio	Flush Mounted
Type of Fastening	Screw
Label Space Provided	No
Illumination	Optional
Color	No color
Number of Batteries	0

Environmental

Temperatura do ar ambiente	Operation -5 ... +35 °C Storage -5 ... +50 °C
Grau de proteção	IP20
Estado RoHS	Following EU Directive 2011/65/EU and Amendment 2015/863 July 22, 2019
Informação RoHS	2CLC810210A1001
REACH Declaration	9AKK108467A7464
Conflict Minerals Reporting Template (CMRT)	9AKK108468A3363

Dimensions

Largura Líquida do Produto	0.149 m
Altura Líquida do Produto	0.078 m
Profundidade/Comprimento Líquidos do Produto	0.225 m
Peso Líquido do Produto	0.06 kg

Ordering

ID de Substituição do Produto (ANTIGA)	2CL0810210
--	------------

Certificates and Declarations

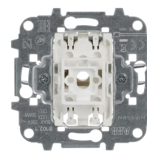
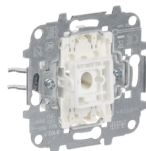
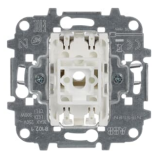
Declaração de conformidade -CE	9AKK106713A1744
--------------------------------	-----------------

Classifications

ETIM 8	EC001590 - Installation switch
ETIM 9	EC001590 - Installation switch
Categoria REEE	5. Small Equipment (No External Dimension More Than 50 cm)
REEE B2C / B2B	Business To Consumer
CN8	85365080
UNSPSC	39122200

Categorias

Produtos e Sistemas de Baixa Tensão → Wiring Accessories - Light Switch Ranges → Flush Mounted Inserts → Mechanical Inserts



360°