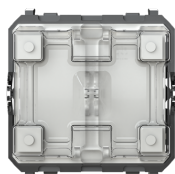


PRODUCT-DETAILS

# RS/U 2.1

## RS/U 2.1 2 binary inputs module 2 rocker switches



### Informazioni generali

Tipo	RS/U 2.1
ID prodotto	2CSY247450R1003
EAN	8012542563624
Descrizione catalogo	RS/U 2.1 2 binary inputs module 2 rocker switches
Descrizione	Device equipped with 2 rocker switches; 2 binary input channels that can be used to interface to KNX system conventional push-buttons/rocker switches, or auxiliary/technical contacts. LEDs for the functional signaling of the load to which the rocker switch is connected. Upper and lower rocker switches can be separated for switching, dimming, shutter functionality. Flush-mounted installation.

### Installation

Istruzioni e manuali	2CKA001473B5038
----------------------	-----------------

### Dati tecnici

Scheda tecnica	2CKA000173B5029
Idoneo per	2-wire
Power Supply Type	Bus System
Gamma prodotto	KNX
Model Number	binary inputs module
Application Function	Electrical Load and Light Control

---

### Dati ambientali

Conflict Minerals Reporting Template (CMRT)	9AKK108468A3363
---	-----------------

---



---

### Dimensioni

Larghezza prodotto	43 mm
Altezza prodotto	44 mm
Profondità prodotto	44 mm
Peso netto prodotto	0.07 kg
Profondità integrata (t <sub>2</sub> )	43 mm

---



---

### Certificati e dichiarazioni (numero del documento)

Dichiarazione di conformità - CE	2CSC500007D2701
----------------------------------	-----------------

---



---

### Classificazioni

ETIM 8	EC002971 - System device clinic-installation
ETIM 9	EC002971 - System device clinic-installation
Categoria RAEE	5. Piccole apparecchiature (nessuna dimensione esterna superiore a 50 cm)
CN8	Business To Consumer
Tipo di oggetto design	85389091

---



---

### Categorie

Prodotti di bassa tensione → Automazione case ed edifici → KNX → User Operation → Zenit / Olas → 2/4 fold

