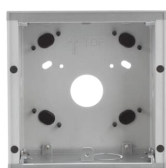


PRODUCT-DETAILS

41021F-02

41021F-02 Flush-mounted box, 1 module, size 1/1



Informations générales

Extension du type de produit	41021F-02
Code de produit	2TMA210010N0007
EAN	6955891804319
Description courte	41021F-02 Flush-mounted box, 1 module, size 1/1
Description longue	Flush-mounted box, 1 module, size 1/1, for 125mm panel

Technique

Number of Gangs	1
Type de montage	Flush Mounted
Matériau	Aluminium
Couleur	Grey

Environnement

Statut RoHS	No declaration needed
REACH Declaration	No declaration needed

Conflict Minerals
Reporting Template
(CMRT)

9AKK108468A3363

Dimensions

Produit Largeur Net	0.124 m
Produit Hauteur Net	0.046 m
Produit Longueur Net	0.126 m
Poids net	0.305 kg

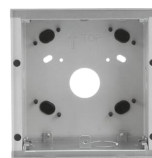
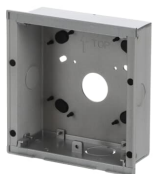
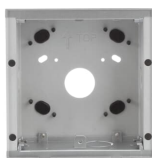
Classifications

ETIM 8	EC000350 - Mounting frame for door station
ETIM 9	EC000350 - Mounting frame for door station
Catégorie DEEE	Product Not in WEEE Scope
WEEE B2C / B2B	Business To Consumer
CN8	85177900

Catégories

Produits basse tension → Home and Building Automation → Portiers vidéo → Welcome → Frames & Mounting Boxes

Produits basse tension → Home and Building Automation → Portiers vidéo → Welcome IP → Frames & Mounting Boxes



360°