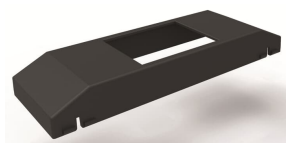


PRODUCT-DETAILS

T2034 BL

Cover plate for MCB w/mounting grid BL - CEM



Informations générales

| | |
|------------------------------|--|
| Extension du type de produit | T2034 BL |
| Code de produit | 2CLA203400T1101 |
| EAN | 8427238143590 |
| Description courte | Cover plate for MCB w/mounting grid BL - CEM |
| Description longue | Compatible with ABB's 2 modules System M Pro MCB's |

Installation

| | |
|-------------------------|--------------------|
| Instructions et manuels | No document needed |
|-------------------------|--------------------|

Technique

| | |
|--|--------------------|
| Fiche produit, informations techniques | No document needed |
| Design Range | CEM |

Environnement

| | |
|----------------------|-------------------------|
| Température de l'air | Operation -5 ... +35 °C |
|----------------------|-------------------------|

| | |
|---|--|
| ambiant | Storage -5 ... +50 °C |
| Statut RoHS | Following EU Directive 2011/65/EU and Amendment 2015/863 July 22, 2019 |
| Informations RoHS | 2CLC203400T1101 |
| REACH Declaration | 9AKK108467A7464 |
| Conflict Minerals Reporting Template (CMRT) | 9AKK108468A3363 |

Dimensions

| | |
|----------------------|----------|
| Produit Largeur Net | 0.15 m |
| Produit Hauteur Net | 0.076 m |
| Produit Longueur Net | 0.15 m |
| Poids net | 0.013 kg |

Certificats et Déclarations (Numéro de document)

| | |
|--------------------------------|-----------------------|
| Déclaration de Conformité - CE | No declaration needed |
|--------------------------------|-----------------------|

Classifications

| | |
|----------------|---|
| ETIM 8 | EC002939 - Accessories/spare parts for installation and connection material |
| ETIM 9 | EC002939 - Accessories/spare parts for installation and connection material |
| Catégorie DEEE | Product Not in WEEE Scope |
| CN8 | 85389099 |

Catégories

Produits basse tension → Wiring Accessories - Light Switch Ranges → Flush Mounted Inserts → Accessories

