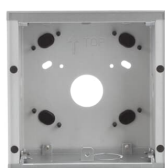


PRODUCT-DETAILS

# 41021F-02

## Flush-mounted box, 1 module, size 1/1 Gris



### Información General

|                            |  |
|----------------------------|--|
| Tipo de producto extendido | 41021F-02  |
| Código de producto         | 2TMA210010N0007  |
| EAN                        | 6955891804319  |
| Descripción corta          | Flush-mounted box, 1 module, size 1/1 Gris             |
| Descripción larga          | Flush-mounted box, 1 module, size 1/1, for 125mm panel |

### Technical

|                  |               |
|------------------|---------------|
| Número de bandas | 1             |
| Tipo de montaje  | Flush Mounted |
| Material         | Aluminium     |
| Color            | Gris          |

### Ambiente

|  |                       |
|--|-----------------------|
| Estado de RoHS   | No declaration needed |
| Declaración REACH  | No declaration needed |
| Plantilla de notificación de minerales de conflicto (CMRT) | 9AKK108468A3363       |

## Dimensiones

|                   |          |
|-------------------|----------|
| Ancho del product | 0.124 m  |
| Alto del producto | 0.046 m  |
| Largo del product | 0.126 m  |
| Peso del product  | 0.305 kg |

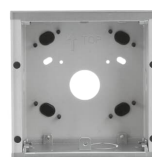
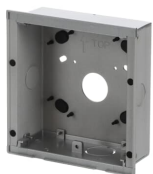
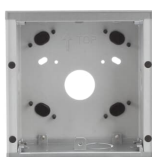
## Clasificaciones

|                |  |
|----------------|--|
| ETIM 8         | EC000350 - Mounting frame for door station |
| ETIM 9         | EC000350 - Mounting frame for door station |
| Categoría RAEE | Product Not in WEEE Scope                  |
| WEEE B2C / B2B | Business To Consumer                       |
| CN8            | 85177900                                   |

## Categorías

Productos y sistemas de baja tensión → Building and Home Automation Solutions → Door Entry & Access Control Systems → Welcome → Frames & Mounting Boxes

Productos y sistemas de baja tensión → Building and Home Automation Solutions → Door Entry & Access Control Systems → Welcome IP → Frames & Mounting Boxes



360°