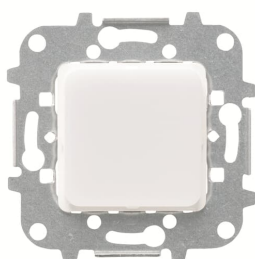


PRODUCT-DETAILS

# 8180.1

## Signaling LED not exchangeable / White No color



### General Information

Extended Product Type	8180.1
Product ID	2CLA818010A1001
EAN	8427238063188
Catalog Description	Signaling LED not exchangeable / White No color
Long Description	Rated voltage: 127-230 Vac / 50-60 Hz Lamp: white LED Luminous flux: > 2 lumen at 1 meter Without fixing claws Cover plate code: 8581 without pictogram or 8581.XX with pictogram, 8481 (optional 8481.1 pictograms), 8281 (optional 8281.1 pictograms) & 5581 (optional 5581.1 pictograms)

### Installation

Instructions and Manuals	2CLX818019A1001
--------------------------	-----------------

### Technical

Data Sheet, Technical Information	9AKK107046A0356
Rated Voltage (U <sub>r</sub> )	230 V

Design Range	Platform 8100 Alba Sky Niessen
Lamp Type	LED not exchangeable
Mounting Type	Flush Mounted
Type of Fastening	Screw
Surface Finishing	Untreated Matt
Material	Thermoplastic Plastic
Color	No color
Lamp Color	White
Number of Batteries	0

## Environmental

Ambient Air Temperature	Operation -5 ... +35 °C Storage -5 ... +50 °C
Degree of Protection	IP20
RoHS Status	Following EU Directive 2011/65/EU and Amendment 2015/863 July 22, 2019
RoHS Information	2CLC818010A1001
REACH Declaration	9AKK108467A7464
Conflict Minerals Reporting Template (CMRT)	9AKK108468A3363

## Dimensions

Product Net Width	0.073 m
Product Net Height	0.052 m
Product Net Depth / Length	0.073 m
Product Net Weight	0.068 kg
Built-In Depth (t <sub>2</sub> )	40 mm

## Ordering

Replaced Product ID (OLD)	2CL0818010
---------------------------	------------

## Certificates and Declarations

Declaration of Conformity - CE	9AKK107680A8230
--------------------------------	-----------------

## Classifications

ETIM 8	EC000064 - Information light signal for domestic switching devices
ETIM 9	EC000064 - Information light signal for domestic switching devices
WEEE Category	5. Small Equipment (No External Dimension More Than 50 cm)
WEEE B2C / B2B	Business To Consumer
CN8	85365080
UNSPSC	39122200

---

## Categories

---

Low Voltage Products and Systems → Wiring Accessories - Light Switch Ranges → Flush Mounted Inserts → Light & Signalization

