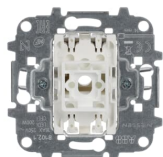


PRODUCT-DETAILS

8102.1

Switch 2-way Two-way switch with LED exchangeable



General Information

Extended Product Type	8102.1
Product ID	2CLA810210A1001
EAN	8427238025186
Catalog Description	Switch 2-way Two-way switch with LED exchangeable
Long Description	Rated voltage: 110 - 250 Vac Rated current: 16AX Screwless terminals Included: fixing claws Optional: locator LED lamp 6192 BL (230 Vac) Rocker code: 8501, 8501.2, 8501.3, 8501.4, 8601, 8601.3, 8401, 8401.2, 8401.3, 8401.4, 8201, 8201.2, 8201.3, 8201.4, 8201.9, 5501, 5501.2, 5501.3, 5501.4 & 5501.5

Installation

Instructions and Manuals	2CLX810109A1001
--------------------------	-----------------

Technical

Data Sheet, Technical Information	9AKK107046A0356
Function	Function lighting: Orientation

Rated Voltage (U _r)	250 V
Rated Current (I _n)	16 A
Maximum Switching Current	Fluorescent Lamps 16
Number of Rocker Switches	1
Design Range	Platform 8100 Alba Sky Niessen
Wiring Configuration	Two-way switch
Actuator Type	Rocker/button
Connection Type	Plug Clamp
Lamp Type	LED exchangeable
Mounting Type	Flush Mounted
Type of Fastening	Screw
Label Space Provided	No
Illumination	Optional
Color	No color
Number of Batteries	0

Environmental

Ambient Air Temperature	Operation -5 ... +35 °C Storage -5 ... +50 °C
Degree of Protection	IP20
RoHS Status	Following EU Directive 2011/65/EU and Amendment 2015/863 July 22, 2019
RoHS Information	2CLC810210A1001
REACH Declaration	9AKK108467A7464
Conflict Minerals Reporting Template (CMRT)	9AKK108468A3363

Dimensions

Product Net Width	0.149 m
Product Net Height	0.078 m
Product Net Depth / Length	0.225 m
Product Net Weight	0.06 kg

Ordering

Replaced Product ID (OLD)	2CL0810210
---------------------------	------------

Certificates and Declarations

Declaration of Conformity - CE	9AKK106713A1744
--------------------------------	-----------------

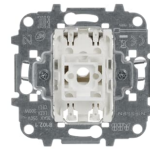
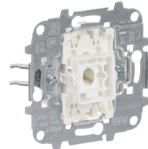
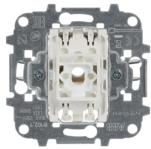
Classifications

ETIM 8	EC001590 - Installation switch
--------	--------------------------------

ETIM 9	EC001590 - Installation switch
WEEE Category	5. Small Equipment (No External Dimension More Than 50 cm)
WEEE B2C / B2B	Business To Consumer
CN8	85365080
UNSPSC	39122200

Categories

Low Voltage Products and Systems → Wiring Accessories - Light Switch Ranges → Flush Mounted Inserts → Mechanical Inserts



360°