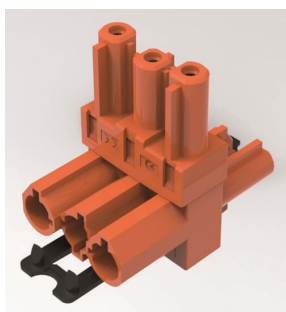


PRODUCT-DETAILS

# T2803 RJ

## Distributor for rapid connector RJ - CEM



### General Information

Extended Product Type	T2803 RJ
Product ID	2CLA280300T1701
EAN	8427238115290
Catalog Description	Distributor for rapid connector RJ - CEM
Long Description	Power distributor for rapid connectors, 3 poles, 1 input, 2 outputs.

### Installation

Instructions and Manuals	No document needed
--------------------------	--------------------

### Technical

Data Sheet, Technical Information	No document needed
Design Range	CEM
Number of Batteries	0

### Environmental

Ambient Air Temperature	Operation -5 ... +35 °C Storage -5 ... +50 °C
Conflict Minerals Reporting Template (CMRT)	9AKK108468A3363

## Dimensions

Product Net Width	33 mm
Product Net Height	44 mm
Product Net Depth / Length	0.15 m
Product Net Weight	0.028 kg

## Certificates and Declarations

Declaration of Conformity - CE	No declaration needed
--------------------------------	-----------------------

## Classifications

ETIM 8	EC002939 - Accessories/spare parts for installation and connection material
ETIM 9	EC002939 - Accessories/spare parts for installation and connection material
WEEE Category	5. Small Equipment (No External Dimension More Than 50 cm)
WEEE B2C / B2B	Business To Consumer
CN8	85366990

## Categories

Low Voltage Products and Systems → Wiring Accessories - Light Switch Ranges → Flush Mounted Inserts → Accessories

