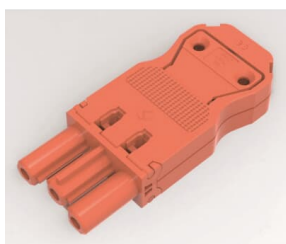


PRODUCT-DETAILS

T2802 RJ

Rapid connector - Female red - CEM



General Information

Extended Product Type	T2802 RJ
Product ID	2CLA280200T1701
EAN	8427238115276
Catalog Description	Rapid connector - Female red - CEM
Long Description	Fast connection female for 1,5 – 2,5 mm ² cables. Color: Red

Installation

Instructions and Manuals	No document needed
--------------------------	--------------------

Technical

Data Sheet, Technical Information	No document needed
Design Range	CEM
Number of Batteries	0

Environmental

Ambient Air Temperature	Operation -5 ... +35 °C Storage -5 ... +50 °C
RoHS Status	Following EU Directive 2011/65/EU and Amendment 2015/863 July 22, 2019
RoHS Information	2CLC280200T1701
REACH Declaration	9AKK108467A7464
Conflict Minerals Reporting Template (CMRT)	9AKK108468A3363

Dimensions

Product Net Width	33 mm
Product Net Height	44 mm
Product Net Depth / Length	0.072 m
Product Net Weight	0.024 kg

Certificates and Declarations

Declaration of Conformity - CE	No declaration needed
--------------------------------	-----------------------

Classifications

ETIM 8	EC002939 - Accessories/spare parts for installation and connection material
ETIM 9	EC002939 - Accessories/spare parts for installation and connection material
WEEE Category	5. Small Equipment (No External Dimension More Than 50 cm)
WEEE B2C / B2B	Business To Consumer
CN8	85366990

Categories

Low Voltage Products and Systems → Wiring Accessories - Light Switch Ranges → Flush Mounted Inserts → Accessories

