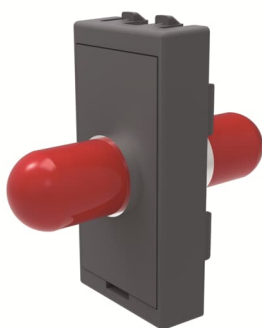


PRODUCT-DETAILS

T2047.1 AN

Fiber optic connector 1M AN Fiber optic 1 gang Anthracite - CEM



General Information

Extended Product Type	T2047.1 AN
Product ID	2CLA204710T1801
EAN	8427238115092
Catalog Description	Fiber optic connector 1M AN Fiber optic 1 gang Anthracite - CEM
Long Description	Cover + connector 45mm x 22,5 mm 1 SCP fiber Color: Anthracite

Installation

Instructions and Manuals	No document needed
--------------------------	--------------------

Technical

Data Sheet, Technical Information	No document needed
Application	Fiber optic
Design Range	CEM
Mounting Type	Module frame
Type of Fastening	Engage (Snap)
Type of Indicator	Without indication field

Outlet Orientation	Straight
Surface Finishing	Decor Matt
Material	Thermoplastic Plastic
Color	Anthracite
Number of Batteries	0

Environmental

Ambient Air Temperature	Operation -5 ... +35 °C Storage -5 ... +50 °C
Degree of Protection	IP20
Conflict Minerals Reporting Template (CMRT)	9AKK108468A3363

Dimensions

Product Net Width	0.076 m
Product Net Height	0.056 m
Product Net Depth / Length	0.072 m
Product Net Weight	0.019 kg

Certificates and Declarations

Declaration of Conformity - CE	9AKK106930A1758
--------------------------------	-----------------

Classifications

ETIM 8	EC000018 - Insert/cover for communication technology
ETIM 9	EC000018 - Insert/cover for communication technology
WEEE Category	5. Small Equipment (No External Dimension More Than 50 cm)
WEEE B2C / B2B	Business To Consumer
CN8	85367000

Categories

Low Voltage Products and Systems → Wiring Accessories - Light Switch Ranges → Flush Mounted Inserts → Accessories

