

## CUBE67 I/O EXTENSION MODULE

8 multifunction channels

Expansion module

DIO8 - 0.5 A (E) - 4× M12

short-circuit and overload protected

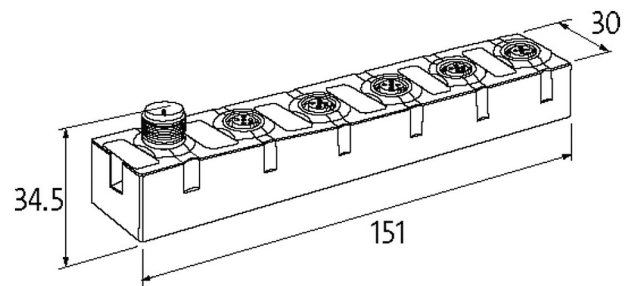
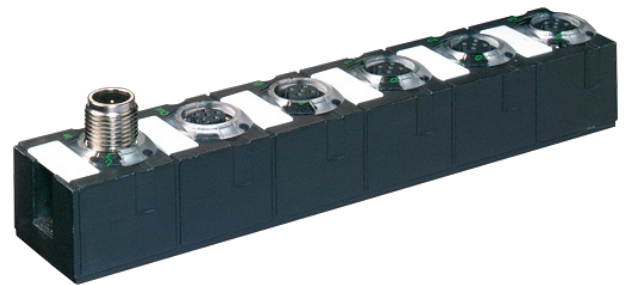
Digital inputs/outputs (multifunctional)

Connection cables are in the online shop under "Connection Technology".

Housing fully potted.

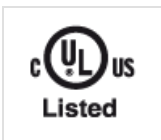
### [Link to Product](#)

#### Illustration



Product may differ from Image

#### Approvals



#### General data

Protection	IP67
Mounting method	2-hole screw mounting
Temperature range	0...+55 °C (storage temperature -20...+75 °C)
Dimensions H×W×D	151×30×34.5 mm

#### Output

Actuator supply UA	24 V DC (EN 61131-2), via system connection (max. 4 A)
Switching current per output	max. 0.5 A (short-circuit and overload protected)
Lamp load	10 W

#### Input

Sensor supply US	24 V DC (EN 61131-2), max. 200 mA (M12 female), short-circuit and overload protected
------------------	--

Type	for 3-wire sensors or mechanical switches, PNP
Input filter	1 ms
<b>Internal communication</b>	
Current consumption	max. 50 mA
LED display	US: sensor supply and internal supply voltage (green: OK); UA: actuator supply (green: OK)
<b>Parameterization</b>	
PIN 2	Input/Output/Diagnostic
PIN 4	Input/Output
<b>Connections</b>	
Fieldbus	via internal system connection
Sensor-system/actuator supply	via internal system connection (max. 2× 4 A)
I/O ports	M12 (female) 5-pole, A-coded
<b>Diagnostic</b>	
Communication status	via LED
Diagnostic via LED	per module and channel
Diagnostic via BUS	per module and channel
Monitoring - under voltage	yes
Monitoring - no voltage	yes
Short-circuit and overload	yes
Actuator warning	per channel via LED and BUS
<b>Commercial data</b>	
country of origin	DE
customs tariff number	85389099
EAN	4048879048538
eClass	27242604
Packaging unit	1