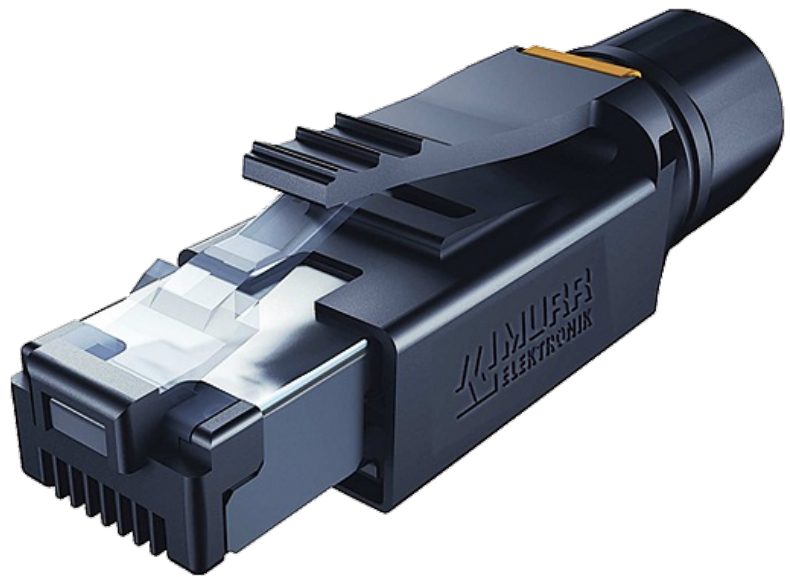


**RJ45 PROFESSIONAL MALE 0° 4 POL. SHIELDED**

Ethernet

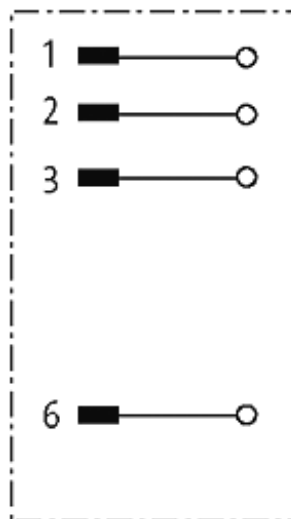
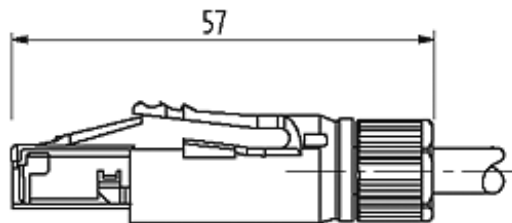
Ethernet CAT5  
Male straight  
RJ45, 4-pole  
shielded  
Protection IP20

Plastic housings with good resistance against chemicals and oils. The resistance to aggressive media should be individually tested for your application. Further details on request.

**[Link to Product](#)****Illustration**

Male

6 321



Product may differ from Image

### Approvals



### More Info



EtherNet/IP

### Form

Form	74001
------	-------

### Technical Data

Operating voltage	max. 60 V DC
Operating current per contact	max. 2 A
Transfer parameters	CAT5, Class D (ISO/IEC 11801:2002), (EN 50173-1)
Transfer rate	up to 100 Mbit/s full duplex
Connection cross section	0.14...0.34 mm <sup>2</sup> (AWG 26...22)
Sealing range (cable Ø)	4.5...9.0 mm
Protection	IP20

### General data

Temperature range	-40...+70 °C
-------------------	--------------

### Commercial data

country of origin	RO
customs tariff number	85366990
EAN	4048879409346
eClass	27279221
Packaging unit	1