



Product designation

Assembled  
miniature relays  
HR302C

Product type designation

**Contact characteristics**

Contact configuration			2 C/O
Rated insulation voltage $U_i$ IEC/EN	V		250
Rated impulse withstand voltage $U_{imp}$	kV		6
IEC Conventional free air thermal current $I_{th}$	A		8
Maximum instantaneous current	A		20
Rated current ( $I_n$ )	A		8
Relay control voltage	V		24VDC

Max contrrollable power in

AC-1	W	2000
AC-15	VA	150

Rated operating power AC-1

VA	2000
----	------

Rated operating power AC-15

230 VAC	VA	150
---------	----	-----

Single-phase motor control

230VAC	kW	0.2
--------	----	-----

Rated operating current DC-1

30V	A	8
110V	A	0.3
220V	A	0.1

Minimum switching load

V / mA	5 / 100
--------	---------

Contact impedance

m $\Omega$	100
------------	-----

Contact material

AgSnO<sub>2</sub>

**Operating times**

Closing	ms	10
Opening	ms	5

**Operations**

Mechanical life	cycles	10000000
Electrical life AC1	cycles	50000

**Coil characteristics**

Average coil consumption AC at 20°C	VA	0.9
Average coil consumption DC at 20°C	W	0.45

Operating range

Closing	% $U_n$	75...110
Opening	% $U_n$	10...30

Maximum cycle frequency

cycles/h	3600
----------	------

**Mechanical features**

Max socket terminal tightening torque	Nm	0.6
Socket screw tightening tool (cross / flat blade)		PH1 / 4.5mm

Conductor section

AWG/Kcmil

	min	20	
	max	14	
IEC			
	min	mm <sup>2</sup>	0.5
	max	mm <sup>2</sup>	2.5
Operating position	normal	Any	
Fixing	On 35mm DIN rail and with screw		

### Ambient conditions

#### Temperature

##### Operating temperature

min	°C	-40
max	°C	+85

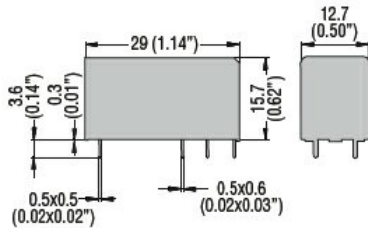
##### Storage temperature

min	°C	-40
max	°C	+85

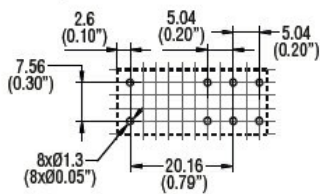
### Other features

Indication	No
Mechanical contact position indicator	No
Mechanical test actuator	No

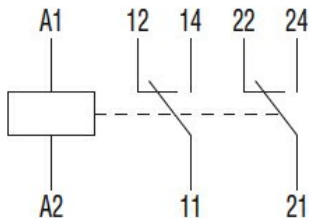
### Dimensions



#### PCB layout



### Wiring diagrams



### Certifications and compliance

#### Compliance

IEC/EN 61810

#### ETIM classification

ETIM 8.0

EC001437 -  
Switching relay