



Auxiliary  
contactor  
BG00

Product designation

Product type designation

**Contact characteristics**

Number of poles	Nr.	4
Rated insulation voltage $U_i$ IEC/EN	V	690
Rated impulse withstand voltage $U_{imp}$	kV	6

Operational frequency

min	Hz	25
max	Hz	400

IEC Conventional free air thermal current  $I_{th}$

A	10
---	----

Protection fuse

gG (IEC)	A	16
----------	---	----

Tightening torque for terminals

min	Nm	0.8
max	Nm	1
min	lbin	9
max	lbin	9

Tightening torque for coil terminal

min	Nm	0.8
max	Nm	1
min	lbin	9
max	lbin	9

Max number of wires simultaneously connectable

Nr.	2
-----	---

Conductor section

AWG/Kcmil

max	12
-----	----

Flexible w/o lug conductor section

min	mm <sup>2</sup>	0.75
max	mm <sup>2</sup>	2.5

Flexible c/w lug conductor section

min	mm <sup>2</sup>	1.5
max	mm <sup>2</sup>	2.5

Flexible with insulated spade lug conductor section

min	mm <sup>2</sup>	1.5
max	mm <sup>2</sup>	2.5

Power terminal protection according to IEC/EN 60529

IP20 when  
properly wired

**Mechanical features**

Operating position

normal allowable	Vertical plan ±30°
---------------------	-----------------------

Fixing

Screw / DIN rail  
35mm

Weight

g	212
---	-----

Conductor section	AWG/kcmil conductor section			max	12
<b>Auxiliary contact characteristics</b>					
Thermal current I <sub>th</sub>				A	10
IEC/EN 60947-5-1 designation				A600 - Q600	
Operating current AC15				230V	A 3
				400V	A 1.9
				500V	A 1.4
Operating current DC12				110V	A 2.9
Operating current DC13				24V	A 2.9
				48V	A 1.4
				60V	A 1.2
				110V	A 0.6
				125V	A 0.55
				220V	A 0.3
				600V	A 0.1
<b>Operations</b>					
Mechanical life				cycles	20000000
<b>Safety related data</b>					
Performance level B10d according to EN/ISO 13489-1				mechanical load	cycles 20000000
Mirror contacts according to IEC/EN 60947-4-1				YES	
EMC compatibility				yes	
<b>DC coil operating</b>					
DC rated control voltage				V	110
DC operating voltage					
	pick-up			min	%Us 75
				max	%Us 115
	drop-out			min	%Us 10
				max	%Us 20
Average coil consumption ≤20°C				in-rush	W 3.2
				holding	W 3.2
<b>Max cycles frequency</b>					
Mechanical operation				cycles/h	3600
<b>Operating times</b>					
Average time for U <sub>s</sub> control	in AC				
	Closing NO			min	ms 12
				max	ms 21
	Opening NO			min	ms 9
				max	ms 18
	Closing NC			min	ms 17
				max	ms 26

	Opening NC	min	ms	7
		max	ms	17
in DC				
	Closing NO	min	ms	18
		max	ms	25
	Opening NO	min	ms	2
		max	ms	3
	Closing NC	min	ms	3
		max	ms	5
	Opening NC	min	ms	11
		max	ms	17

**UL technical data**

**General USE**

Contactor	AC current	A	10
Contact rating of auxiliary contacts according to UL			A600 - Q600

**Ambient conditions**

**Temperature**

Operating temperature	min	°C	-50
	max	°C	+70
Storage temperature	min	°C	-60
	max	°C	+80

**Max altitude**

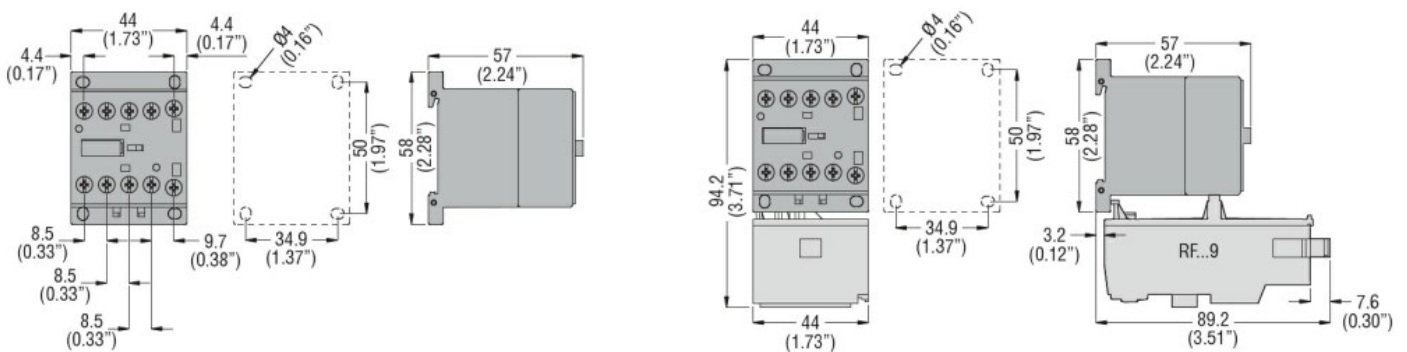
m 3000

**Resistance & Protection**

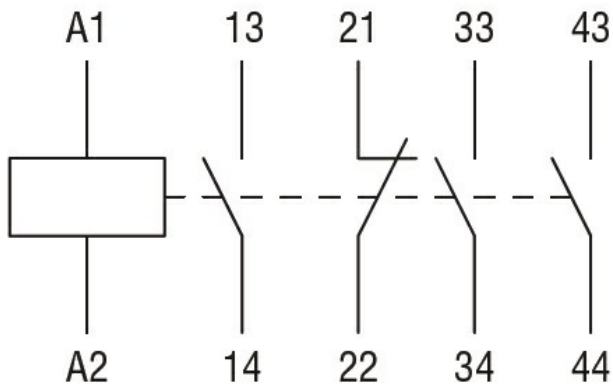
**Pollution degree**

3

**Dimensions**



**Wiring diagrams**



**Certifications and compliance**

Compliance

CSA C22.2 n° 60947-1

CSA C22.2 n° 60947-5-1

IEC/EN 60947-1

IEC/EN 60947-5-1

UL 60947-1

UL 60947-5-1

Certificates

cULus

EAC

**ETIM classification**

ETIM 8.0

EC000196 -  
 Contactor relay