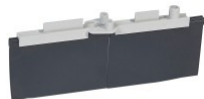


CAT. N° 0 288 98

**INSULATION SHIELD FOR DMX³ / DMX³-I FRAMES 2500 / 4000 / 6300 FIXED VERSION - 3P**

Pack (number of units)	1
Volume (dm ³)	2,351
Weight (g)	361,00

Product characteristics**Insulation shields****For fixed version**

- 3P
- Insulation shields for DMX³/DMX³-I frames 2500 / 4000 / 6300

General characteristics**Rear terminals for DMX³ 2500, 4000 and 6300****Documentation****Catalogue pages & additional information**

- [Description page \(p.164\)](#)
- [Supply invertors equipment for DMX3 2500, 4000 and 6300](#)

**Installation instructions & related documents**

- [Y3902C](#)