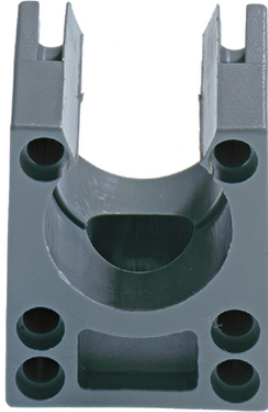


SILVYN® KLICK-S

SILVYN® KLICK-S - conduit holder for SILVYN® RILL



Benefits

- Fast assembly
- Easy to disassemble
- High tensile strength
- Conduit retained by rib

Application range

- In combination with protective conduit
- SILVYN® RILL PA 6
- SILVYN® RILL PA 12
- Fastening of conduits on machine walls for all applications

Product features

- Impact-resistant polyamide

Product Make-up

- Multi-part conduit holder with M5 borehole for fixation

Technical Data

| | |
|------------------------|---|
| Classification ETIM 5: | ETIM 5.0 Class-ID: EC001171 ETIM 5.0 Class-Description: Holder for protective hose |
| Classification ETIM 6: | ETIM 6.0 Class-ID: EC001171 ETIM 6.0 Class-Description: Holder for protective hose |
| Colour delivered: | Grey (RAL 7031) Black (RAL 9011), UV-resistant |
| Material: | PA6 |
| Temperature range: | -40°C to +105°C |

Note

Photographs and graphics are not to scale and do not represent detailed images of the respective products. Prices are net prices without VAT and surcharges. Sale to business customers only.

SILVYN® KLICK-S

| Article number | Nominal size | For conduit with outer Ø (mm) | Pieces / PU |
|----------------------|--------------|-------------------------------|-------------|
| SILVYN® KLICK-S grey | | | |
| 61811110 | 10 | 10 | 100 |
| 61811120 | 13 | 13 | 100 |
| 61811130 | 16 | 15.8 | 50 |
| 61811190 | 18 | 18.5 | 50 |
| 61811140 | 21 | 21.2 | 50 |
| 61811150 | 28 | 28.5 | 50 |
| 61811160 | 34 | 34.5 | 30 |
| 61811170 | 42 | 42.5 | 20 |
| 61811180 | 54 | 54.5 | 20 |

Last Update (07.02.2021)

©2021 Lapp Group - Technical changes reserved

Product Management www.lappkabel.de

You can find the current technical data in the corresponding data sheet.

PN 0456 / 02_03.16