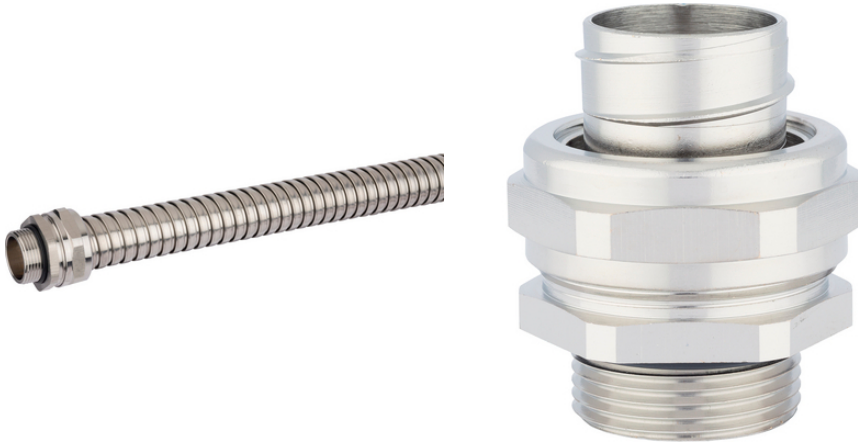


SILVYN® UI COMPACT M

SILVYN® UI COMPACT M - nickel-plated brass conduit fitting for use with SILVYN® UI 511

Info

Space-saving due to compact dimensions.



Good chemical resistance



Corrosion-resistant



Mechanical resistance



Robust



Reliability



Temperature-resistant



UV-resistant

Benefits

High chemical-resistance
For high mechanical stress
High tensile strength
Corrosion-resistant

Application range

Last Update (09.03.2022)

©2022 Lapp Group - Technical changes reserved

Product Management www.lappkabel.de

You can find the current technical data in the corresponding data sheet.

PN 0456 / 02_03.16

SILVYN® UI COMPACT M

In combination with protective conduit:
SILVYN® UI 511

Product Make-up

Metric connection thread
Hexagonal collar
Threaded sleeve
Cap nut

Technical Data

| | |
|------------------------|--|
| Classification ETIM 5: | ETIM 5.0 Class-ID: EC001180 ETIM 5.0 Class-Description: Screw connection for protective metallic hose |
| Classification ETIM 6: | ETIM 6.0 Class-ID: EC001180 ETIM 6.0 Class-Description: Screw connection for protective metallic hose |
| Material: | Stainless steel AISI 304 DW no. 1.4301 Nickel-plated brass |
| Protection rating: | IP 40 |
| Temperature range: | -45 °C to +105 °C (with O-Ring) -55 °C to +260 °C (without O-Ring) |

Note

Photographs and graphics are not to scale and do not represent detailed images of the respective products.
Prices are net prices without VAT and surcharges. Sale to business customers only.

SILVYN® UI COMPACT M

| Article number | Metric size | Clear opening (mm) | Suitable for SILVYN® UI 511 | Pieces / PU |
|--|-------------|--------------------|-----------------------------|-------------|
| SILVYN® UI COMPACT M (stainless steel) | | | | |
| 61803880 | 16 x 1.5 | 9.8 | 3/8" | 1 |
| 61803881 | 20 x 1.5/1 | 9.8 | 3/8" | 1 |
| 61803882 | 20 x 1.5/2 | 13.9 | 1/2" | 1 |
| 61803883 | 25 x 1.5 | 18.5 | 3/4" | 1 |
| 61803884 | 32 x 1.5 | 22.8 | 1" | 1 |
| 61803885 | 40 x 1.5 | 30.8 | 1 1/4" | 1 |
| 61803886 | 50 x 1.5 | 36.8 | 1 1/2" | 1 |
| 61803887 | 63 x 1.5 | 47.8 | 2" | 1 |
| SILVYN® UI COMPACT M (nickel-plated brass) | | | | |
| 61803870 | 16 x 1.5/1 | 6.8 | 5/16" | 1 |
| 61803871 | 16 x 1.5/2 | 9.8 | 3/8" | 1 |
| 61803872 | 20 x 1.5/1 | 6.8 | 5/16" | 1 |
| 61803873 | 20 x 1.5/2 | 9.8 | 3/8" | 1 |
| 61803874 | 20 x 1.5/3 | 13.9 | 1/2" | 1 |
| 61803875 | 25 x 1.5 | 18.5 | 3/4" | 1 |
| 61803876 | 32 x 1.5 | 22.8 | 1" | 1 |
| 61803877 | 40 x 1.5 | 30.8 | 1 1/4" | 1 |
| 61803878 | 50 x 1.5 | 36.9 | 1 1/2" | 1 |
| 61803879 | 63 x 1.5 | 47.9 | 2" | 1 |

Last Update (09.03.2022)

©2022 Lapp Group - Technical changes reserved

 Product Management www.lappkabel.de

 You can find the current technical data in the corresponding data sheet.
 PN 0456 / 02_03_16