

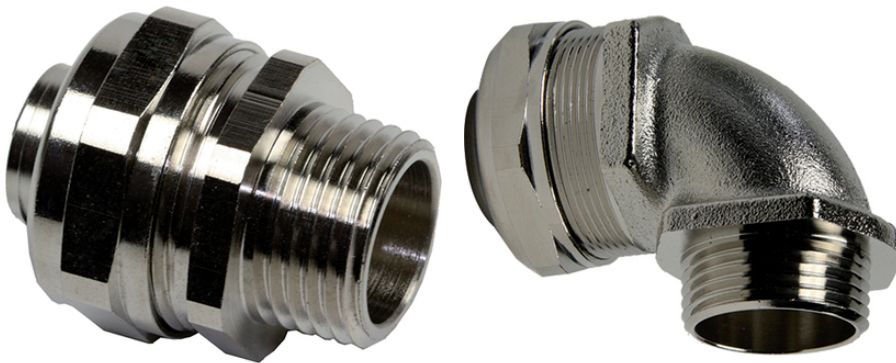
## SILVYN® COMPACT NPT

Nickel-plated brass fitting with space-saving dimensions in various designs

SILVYN® COMPACT NPT - nickel-plated brass conduit fitting with polished surface that offers IP67 protection

### Info

Space-saving due to compact dimensions



Mechanical resistance



Low weight



Space requirement



Robust



Temperature-resistant

### Benefits

Space-saving application  
For high mechanical stress  
High tensile strength  
Corrosion-resistant

### Application range

In combination with protective conduit:  
Suitable for SILVYN® HTDL/EF/OR/HCX/HFX  
Mechanical engineering  
Railway applications

Last Update (10.01.2022)

©2022 Lapp Group - Technical changes reserved

Product Management [www.lappkabel.de](http://www.lappkabel.de)

You can find the current technical data in the corresponding data sheet.

PN 0456 / 02\_03.16

## SILVYN® COMPACT NPT

### Product Make-up

NPT connection thread  
Hexagonal collar  
Threaded sleeve  
Cap nut

### Technical Data

Classification ETIM 5:	ETIM 5.0 Class-ID: EC001180 ETIM 5.0 Class-Description: Screw connection for protective metallic hose
Classification ETIM 6:	ETIM 6.0 Class-ID: EC001180 ETIM 6.0 Class-Description: Screw connection for protective metallic hose
Norm references / Approvals:	UL 514B
Material:	Body: nickel-plated brass Sealing: polyamide O-ring: NBR
Protection rating:	IP 67
Temperature range:	-45°C to +105°C

### Note

\* Trade product, no Lapp product

Photographs and graphics are not to scale and do not represent detailed images of the respective products.  
Prices are net prices without VAT and surcharges. Sale to business customers only.

**SILVYN® COMPACT NPT**

Article number	NPT size	Suitable for SILVYN® HTDL/EF/OR/HCX/HFX	Suitable for SILVYN® HIPROJACKET	Pieces / PU
<b>SILVYN® COMPACT NPT</b>				
61803832	1/2"	3/8"	13	10
61803833	1/2"	1/2"	16	10
61803834	3/4"	3/4"	22	5
61803835	1"	1"	25	5
61803836	1 1/4"	1 1/4"	35	2
61803837	1 1/2"	1 1/2"	38	2
61803838	2"	2"	51	2
<b>SILVYN® COMPACT 90° NPT</b>				
61803839	1/2"	3/8"	13	10
61803840	1/2"	1/2"	16	10
61803841	3/4"	3/4"	22	5
61803842	1"	1"	25	5
61803843	1 1/4"	1 1/4"	35	2
61803844	1 1/2"	1 1/2"	38	2
61803845	2"	2"	51	2

Last Update (10.01.2022)

©2022 Lapp Group - Technical changes reserved

 Product Management [www.lappkabel.de](http://www.lappkabel.de)

 You can find the current technical data in the corresponding data sheet.  
 PN 0456 / 02\_03\_16