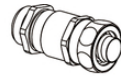
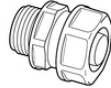


## SILVYN® FPS

SILVYN® FPS is a highly flexible protection conduit made of PVC



SILVYN® MSK-M



SILVYN® USK/USK-M  
IP54



SILVYN® US/US-M + EE-K  
IP54



SILVYN® LKI/LKI-M  
IP54



SILVYN® EE-K



Corrosion-resistant



Power chain



Waterproof

### Benefits

- Dimensionally stable
- Crushable and extendable
- Highly oil and acid-resistant
- Liquidtight
- Corrosion-resistant

### Application range

- Mechanical engineering
- In drag chains (SILVYN® CHAIN)
- Robot-building
- Moving applications
- Indoor applications

### Product features

- Cadmium-free
- Silicone-free

### Norm references / Approvals

UL FILENUMBER E308201

Last Update (16.10.2021)

©2021 Lapp Group - Technical changes reserved

Product Management [www.lappkabel.de](http://www.lappkabel.de)

You can find the current technical data in the corresponding data sheet.

PN 0456 / 02\_03.16

## SILVYN® FPS

### Product Make-up

PVC-insulated steel spring wire  
Soft PVC outer sheath

### Note

PU = 50 m (on request)

### Technical Data

Classification ETIM 5:	ETIM 5.0 Class-ID: EC001177 ETIM 5.0 Class-Description: Protective plastic hose
Classification ETIM 6:	ETIM 6.0 Class-ID: EC001177 ETIM 6.0 Class-Description: Protective plastic hose
Certifications:	IEC EN 61386-23
Colour delivered:	Grey
Material:	Soft PVC with insulated spring steel wire
Temperature range:	-25°C to +80°C

### Note

Photographs and graphics are not to scale and do not represent detailed images of the respective products.  
Prices are net prices without VAT and surcharges. Sale to business customers only.

**SILVYN® FPS**

Article number	Nominal size	ID x OD mm	Bending radius (mm)	Suitable for SILVYN® USK-M/US-M	Suitable for SILVYN® LKI-M/MSK-M	Suitable for SILVYN® USK/US/LKI/EE-K	PU ring (m)
<b>SILVYN® FPS</b>							
61711550	10	7 x 10	8	10 x 1,0	12 x 1,5	7	25
61711590	14	10 x 14	10	12 x 1,5	16 x 1,5	9	25
61711630	17	12.7 x 17.0	13	16 x 1,5	20 x 1,5	11	25
61711670	19	14.7 x 19.0	15	-	-	13,5	25
61711710	21	16 x 21	17	20 x 1,5	25 x 1,5	16	25
61711750	27	21.6 x 27.0	20	25 x 1,5	32 x 1,5	21	25
61711790	36	29 x 36	25	32 x 1,5	40 x 1,5	29	25
61711830	45	38 x 45	36	40 x 1,5	50 x 1,5	36	25
61711910	56	48 x 56	40	50 x 1,5	63 x 1,5	48	25
<b>SILVYN® FPS 10M</b>							
61721690	10	7 x 10	8	10 x 1,0	12 x 1,5	7	10
61721700	14	10 x 14	10	12 x 1,5	16 x 1,5	9	10
61721710	17	12.7 x 17.0	13	16 x 1,5	20 x 1,5	11	10
61721720	19	14.7 x 19.0	15	-	-	13,5	10
61721730	21	16 x 21	17	20 x 1,5	25 x 1,5	16	10
61721740	27	21.6 x 27.0	20	25 x 1,5	32 x 1,5	21	10
61721750	36	29 x 36	25	32 x 1,5	40 x 1,5	29	10
61721760	45	38 x 45	36	40 x 1,5	50 x 1,5	36	10
61721780	56	48 x 56	40	50 x 1,5	63 x 1,5	48	10

Last Update (16.10.2021)

©2021 Lapp Group - Technical changes reserved

Product Management www.lappkabel.de

 You can find the current technical data in the corresponding data sheet.  
 PN 0456 / 02\_03.16