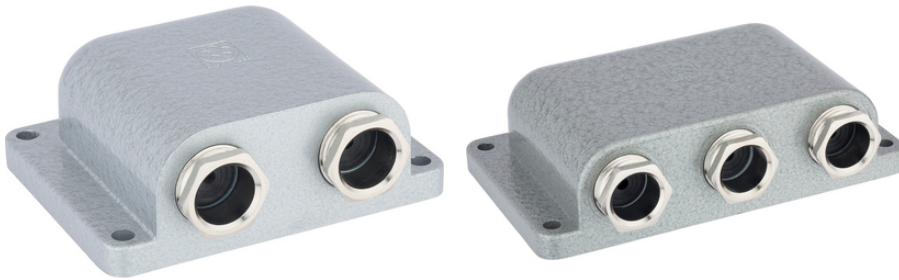


## SKINDICHT® SE-M 220/320

SKINDICHT® SE-M 220/320, angular cable outlet with 2-3 separate cable outlets, for missing connection thread and high mechanical load



Corrosion-resistant



Space requirement



Connector with standard housing unit



Temperature-resistant

### Benefits

Combination of various conduit glands is possible depending on the type

Low overall height

High stability

Two or three separate cable outlets

### Application range

For high mechanical stress

When no connection thread is provided

### Note

Type SKINDICHT® SE-M 220/320 without E+D is without incised sealing ring (E) and without compression screw (D)

Type SKINDICHT® SE-M 220/320 without E+D can be combined with all cable glands (incl. O-ring) such as sealing, strain-relief, anti-kink, conduit-connecting or earthing glands

The protection class is dependent on the combination with the various special glands. The minimum standard is IP 55.

### Technical Data

Classification ETIM 5:

ETIM 5.0 Class-ID: EC000441

Last Update (08.03.2022)

©2022 Lapp Group - Technical changes reserved

Product Management [www.lappkabel.de](http://www.lappkabel.de)

You can find the current technical data in the corresponding data sheet.

PN 0456 / 02\_03.16

## SKINDICHT® SE-M 220/320

Classification ETIM 6:	ETIM 5.0 Class-Description: Cable screw gland ETIM 6.0 Class-ID: EC000441 ETIM 6.0 Class-Description: Cable screw gland
Material:	Body: zinc die-casting, hammer tone finish Compression screw: nickel-plated brass Incised sealing ring: CR/NBR Flat sealing: SBR
Protection rating:	IP 55
Temperature range:	-20°C to +80°C

### Note

Photographs and graphics are not to scale and do not represent detailed images of the respective products.  
Prices are net prices without VAT and surcharges. Sale to business customers only.

**SKINDICHT® SE-M 220/320**

Article number	Article designation / size	Incised sealing ring ØF (mm)	Overall height (mm)	SW wrench size mm	Overall length C mm	Overall width (mm)	Pieces / PU
SKINDICHT® SE-M 220/320							
52108040	2 x M20 x 1,5	2 x 4/7/10/13	33.5	20	76.8	91.0	1
52108050	3 x M20 x 1,5	3 x 4/7/10/13	33.5	20	76.8	124.0	1
SKINDICHT® SE-M 220/320 without E+D							
52108041	2 x M20 x 1,5	-	33.5	-	70.0	91.0	1
52108051	3 x M20 x 1,5	-	33.5	-	70.0	124.0	1

Last Update (08.03.2022)

©2022 Lapp Group - Technical changes reserved

Product Management [www.lappkabel.de](http://www.lappkabel.de)You can find the current technical data in the corresponding data sheet.  
PN 0456 / 02\_03\_16