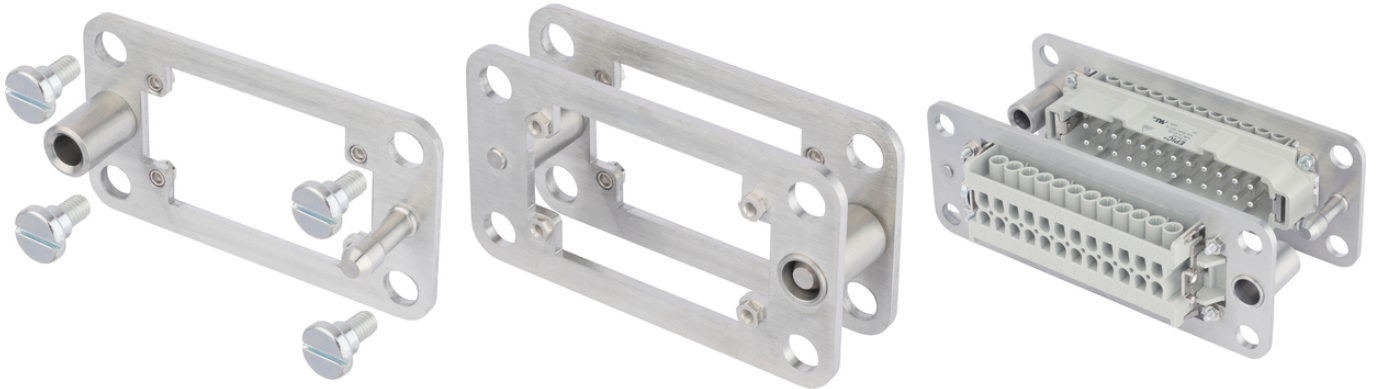


## EPIC® Docking frame

The installation system for control cabinets is available as a set or as single components (upper part for the cable connector, lower part for installation to DIN rail).

### Info

Mounting system for control cabinets  
for float-mounting fixing of the inserts



### Application range

Control cabinet manufacturing  
Wind power plants

### Product features

Scope of delivery per packaging unit: 2 frames with 8 screws  
Special screws adapted to frame  
Pull-In range in x and y axis: + - 1,5mm

### Technical Data

Classification ETIM 5:

ETIM 5.0 Class-ID: EC002312

ETIM 5.0 Class-Description: Contact insert holder for industrial connectors

Classification ETIM 6:

ETIM 6.0 Class-ID: EC002312

ETIM 6.0 Class-Description: Contact insert holder for industrial connectors

Material:

Docking frame: stainless steel

Screws: steel zinc plated

Cycle of mechanical operation:

500

### Note

Photographs and graphics are not to scale and do not represent detailed images of the respective products.  
Prices are net prices without VAT and surcharges. Sale to business customers only.

**EPIC® Docking frame**

Article number	Article description	Version	Pieces / PU
44429440	H-B 6 DF	4 fixing screws each included	2
44429441	H-B 10 DF	4 fixing screws each included	2
44429442	H-B 16 DF	4 fixing screws each included	2
44429443	H-B 24 DF	4 fixing screws each included	2

Last Update (10.02.2021)

©2021 Lapp Group - Technical changes reserved

Product Management [www.lappkabel.de](http://www.lappkabel.de)

You can find the current technical data in the corresponding data sheet.  
PN 0456 / 02\_03.16