

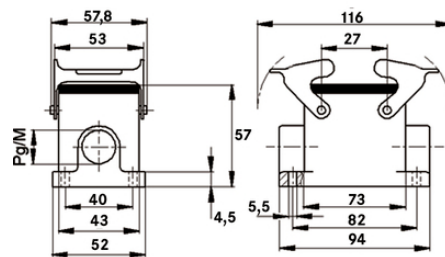
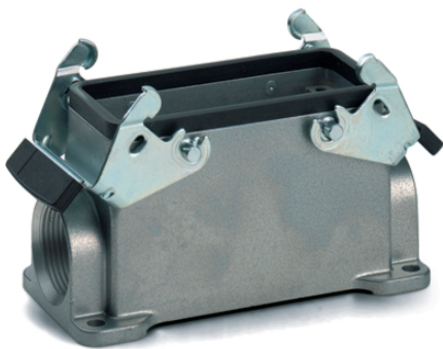
EPIC® H-B 10 SGRL

Housing design H-B. The industry standard.

The universal metal housing for rectangular connectors consists of 2 double levers and 2 cable entries and is suitable for use in the plastics industry.

Info

Double lever version with 2 levers for increased safety
For easy introduction of two cables



Supplementary automation components from Lapp



Mechanical and plant engineering



Mechanical resistance



Robust



Waterproof

Benefits

The smallest housing with single and double lever. The right housing is available for every application

Application range

Plant engineering
Light & sound technology
Plastics industry

Product features

Last Update (16.10.2021)

©2021 Lapp Group - Technical changes reserved

Product Management www.lappkabel.de

You can find the current technical data in the corresponding data sheet.

PN 0456 / 02_03.16

EPIC® H-B 10 SGRL

Surface-mount base, low version
Dual levers
2 cable entries

Technical Data

Classification ETIM 5:	ETIM 5.0 Class-ID: EC000437 ETIM 5.0 Class-Description: Housing for industrial connectors
Classification ETIM 6:	ETIM 6.0 Class-ID: EC000437 ETIM 6.0 Class-Description: Housing for industrial connectors
Material:	Housing: powder-coated aluminium alloy, grey Lever: zinc-plated steel Sealing: NBR
Protection rating:	IP 65 (latched) NEMA 250, UL50E: 12, 4 (latched)
VDE-tested:	Certified production control: VDE-REG. no.: B437 UL-tested: UL File Number: E75770
Temperature range:	-40°C to +100°C, short-term up to +125°C

Note

Photographs and graphics are not to scale and do not represent detailed images of the respective products.
Prices are net prices without VAT and surcharges. Sale to business customers only.

EPIC® H-B 10 SGRL

Article number	Article description	M	PG	Pieces / PU
H-B housing: surface-mount base (2 cable entries, double lever)				
10035000	H-B 10 SGRL 16	-	16	10
19035000	H-B 10 SGRL M20	20	-	10
19035100	H-B 10 SGRL M25	25	-	10

Last Update (16.10.2021)

©2021 Lapp Group - Technical changes reserved

Product Management www.lappkabel.de

You can find the current technical data in the corresponding data sheet.

PN 0456 / 02_03.16