

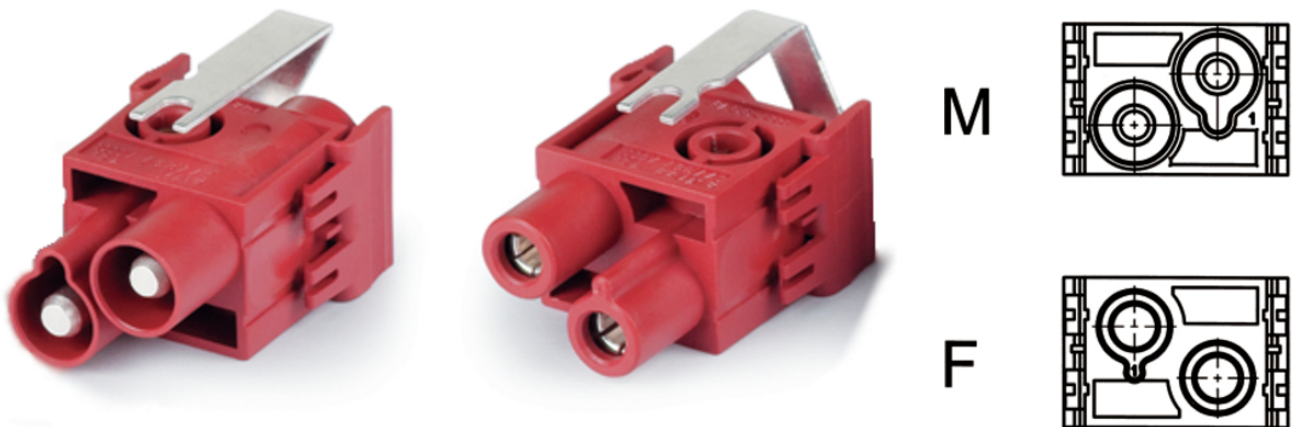
EPIC® MC module: HC1+PE

The mixed assembly guarantees high flexibility. For applications in mechanical and plant engineering, for printing machines and slide-in technology.

The power module with screw termination and reinforced protective grounding is suitable for use in printing presses and control systems.

Info

High power module with screw connection and reinforced protection earth
Lever for rapid removal of the module



Supplementary automation components from Lapp



Mechanical and plant engineering



Wind Energy

Benefits

The mix of different functions in one plug guarantees high flexibility
Screw connection up to 25mm² for easy assembly without special tools
Separate protective conductor for increased safety

Application range

Plant engineering
Printing machines
Control engineering

Technical Data

Classification ETIM 5:

ETIM 5.0 Class-ID: EC002641

ETIM 5.0 Class-Description: Modular connector (industrial connector)

Last Update (06.08.2021)

©2021 Lapp Group - Technical changes reserved

Product Management www.lappkabel.de

You can find the current technical data in the corresponding data sheet.

PN 0456 / 02_03.16

EPIC® MC module: HC1+PE

Classification ETIM 6:	ETIM 6.0 Class-ID: EC002641 ETIM 6.0 Class-Description: Modular connector (industrial connector)
Rated voltage (V):	IEC: 1000 V UL: 600 V CSA: 600 V
Rated current (A):	82 A
Pollution degree:	3
Contact resistance:	< 2 mOhm
Contacts:	Copper alloy, hard silver-plated
Number of contacts:	1 + PE
Termination methods:	Screw termination: 10 - 25 mm ²
Stripping length (mm):	15
Cycle of mechanical operation:	100
VDE-tested:	Certified production control: VDE-REG. no. A870 UL-tested: UL File Number: E75770
Temperature range:	-40°C to +100°C, short-term up to +125°C

Note

Photographs and graphics are not to scale and do not represent detailed images of the respective products. Prices are net prices without VAT and surcharges. Sale to business customers only.

EPIC® MC module: HC1+PE

Article number	Article description	Contact type	Number of operating contacts	Slots	Pieces / PU
Module: high current 1-pin + PE					
10344600	MCS-HC 1+PE	male	1 + PE	2	5
10345600	MCB-HC 1+PE	female	1 + PE	2	5

Last Update (06.08.2021)

©2021 Lapp Group - Technical changes reserved

Product Management www.lappkabel.de

You can find the current technical data in the corresponding data sheet.
PN 0456 / 02_03_16