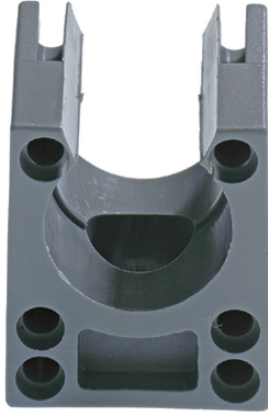


SILVYN® KLICK-S

SILVYN® KLICK-S - conduit holder for SILVYN® RILL



Benefits

- Fast assembly
- Easy to disassemble
- High tensile strength
- Conduit retained by rib

Application range

- In combination with protective conduit
- SILVYN® RILL PA 6
- SILVYN® RILL PA 12
- Fastening of conduits on machine walls for all applications

Product features

- Impact-resistant polyamide

Product Make-up

- Multi-part conduit holder with M5 borehole for fixation

Technical Data

Classification ETIM 5:	ETIM 5.0 Class-ID: EC001171 ETIM 5.0 Class-Description: Holder for protective hose
Classification ETIM 6:	ETIM 6.0 Class-ID: EC001171 ETIM 6.0 Class-Description: Holder for protective hose
Colour delivered:	Grey (RAL 7031) Black (RAL 9011), UV-resistant
Material:	PA6
Temperature range:	-40°C to +105°C

Note

Photographs and graphics are not to scale and do not represent detailed images of the respective products. Prices are net prices without VAT and surcharges. Sale to business customers only.

SILVYN® KLICK-S

Article number	Nominal size	For conduit with outer Ø (mm)
SILVYN® KLICK-S grey		
61811110	10	10
61811120	13	13
61811130	16	15.8
61811190	18	18.5
61811140	21	21.2
61811150	28	28.5
61811160	34	34.5
61811170	42	42.5
61811180	54	54.5

Last Update (23.03.2019)

©2019 Lapp Group - Technical changes reserved

Product Management www.lappkabel.de

You can find the current technical data in the corresponding data sheet.
PN 0456 / 02_03.16