



Adapter plate for GSTA1, 250A, 5mm

Part no. A-GSTA1/50/16
Catalog No. 059864

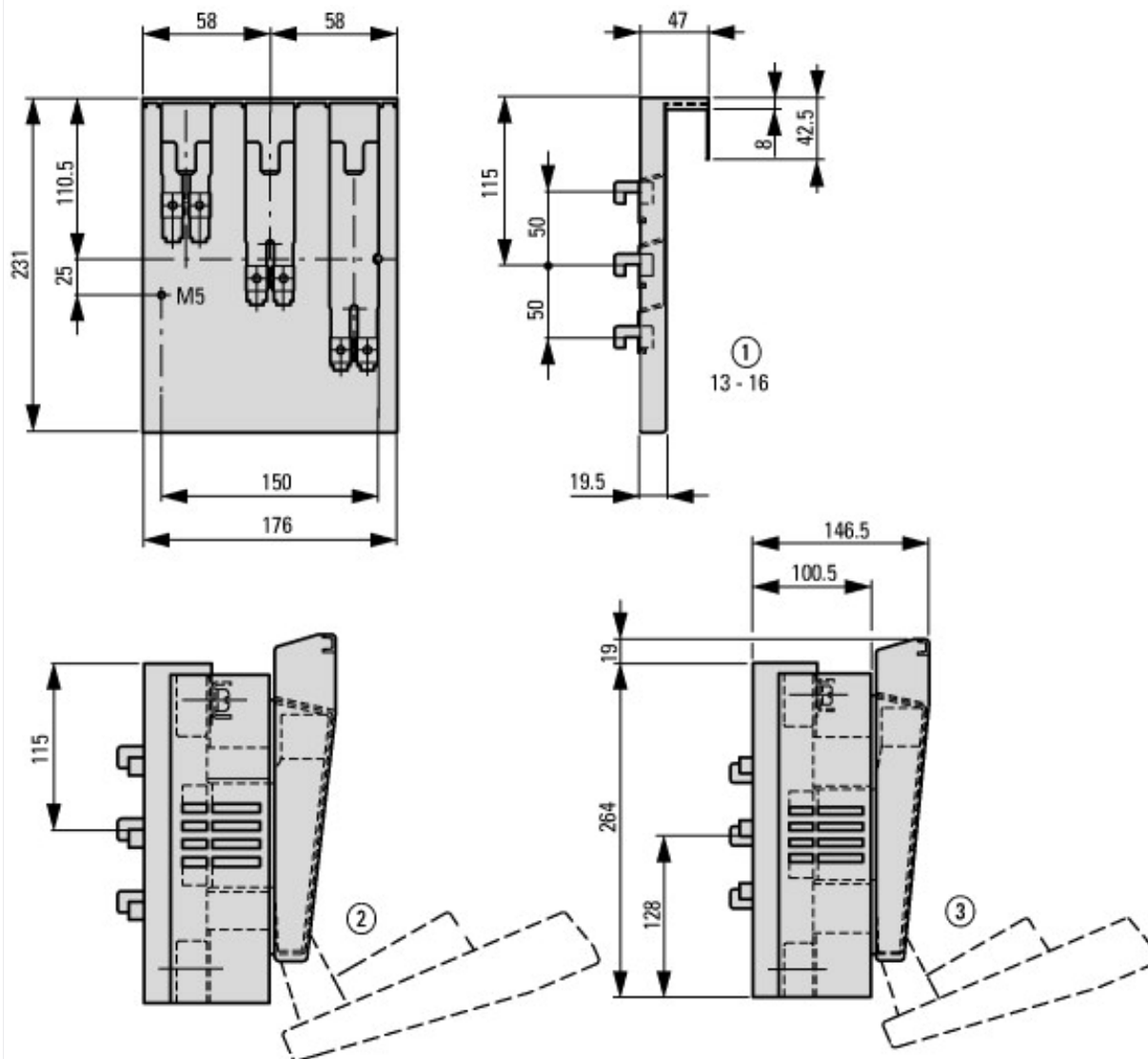
Delivery program

Rated operational current	I _e	A	250
Rated operational voltage	U _e	V AC	690
Fuse cartridge		Size	NH1
For use with			CU20 x 15

Technical data ETIM 7.0

Low-voltage industrial components (EG000017) / Busbar adapter (EC001531)			
Electric engineering, automation, process control engineering / Low-voltage switch technology / Busbar trunking system (LV circuitry) / Busbar adapter (low-voltage switching technology) (ecl@ss10.0.1-27-37-03-04 [ACN951011])			
Mounting rail armament			None
Type of electric connection			None
Rated current I _n		A	250
Min. busbar thickness		mm	5
Max. busbar thickness		mm	5
Width of the adapter		mm	176
Rail width		mm	20
Busbar distance		mm	0

Dimensions



- ① Busbar thickness
- ② Outgoer at the bottom
- ③ Outgoer at the top