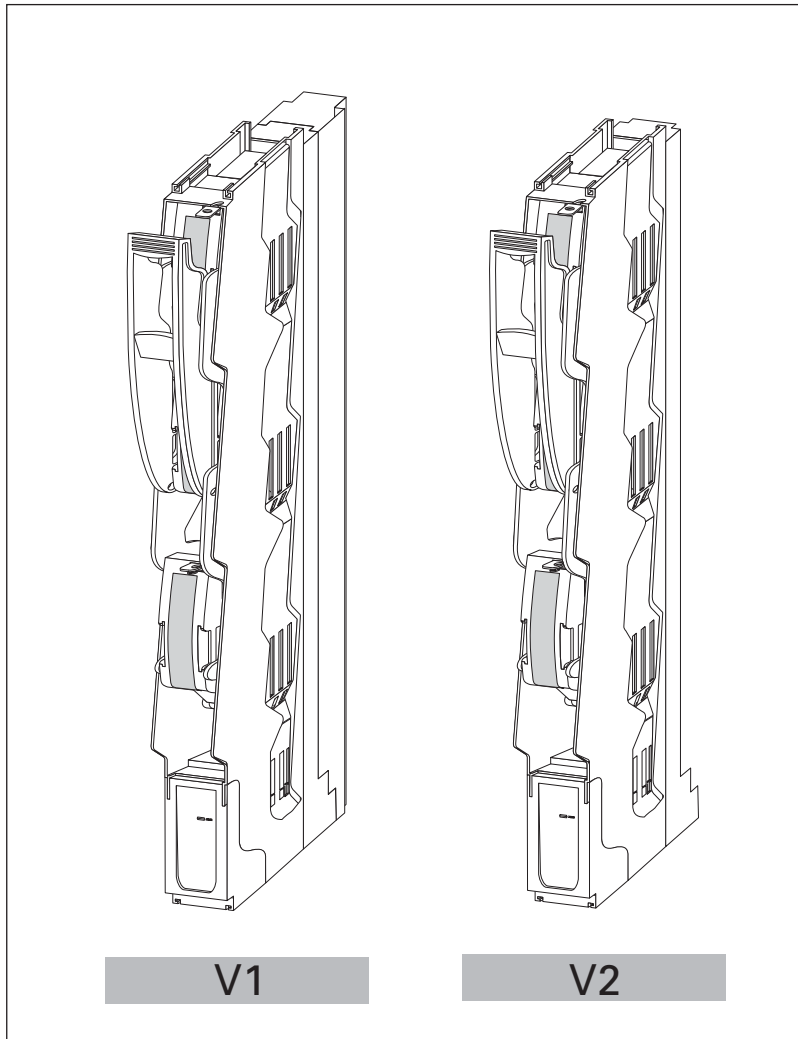


NH-Sicherungs-Lasttrennleiste-Größe 00  
NH in-line fuse switch-disconnector  
Seccionadores verticales para fusibles NH  
réglette interrupteur-sectionneur-fusibles DIN  
bas sezion. vertical per fusibili NH  
NH-条形熔断器式负荷隔离开关



**(en) Electric current! Danger to life!**

Only skilled or instructed persons may carry out the following operations.

**(de) Lebensgefahr durch elektrischen Strom!**

Nur Elektrofachkräfte und elektrotechnisch unterwiesene Personen dürfen die im Folgenden beschriebenen Arbeiten ausführen.

**(fr) Tension électrique dangereuse !**

Seules les personnes qualifiées et averties doivent exécuter les travaux ci-après.

**(es) ¡Corriente eléctrica! ¡Peligro de muerte!**

El trabajo a continuación descrito debe ser realizado por personas cualificadas y advertidas.

**(it) Tensione elettrica: Pericolo di morte!**

Solo persone abilitate e qualificate possono eseguire le operazioni di seguito riportate.

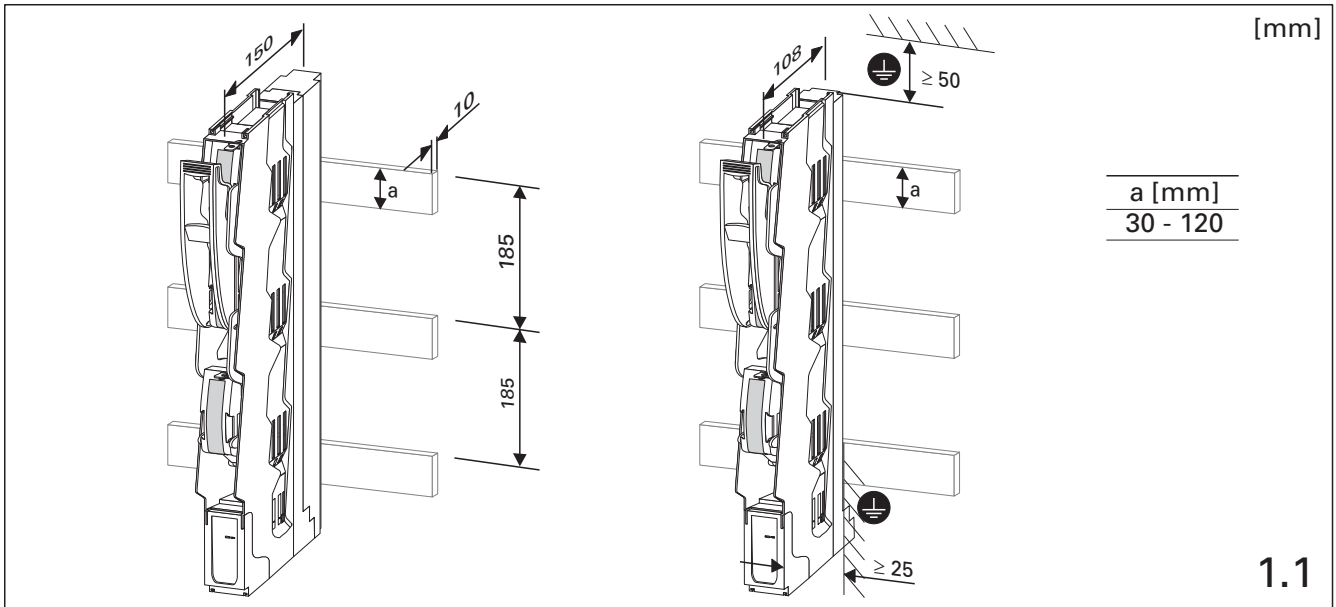
**(zh) 触电危险!**

只允许专业人员和受过专业训练的人员进行下列工作。

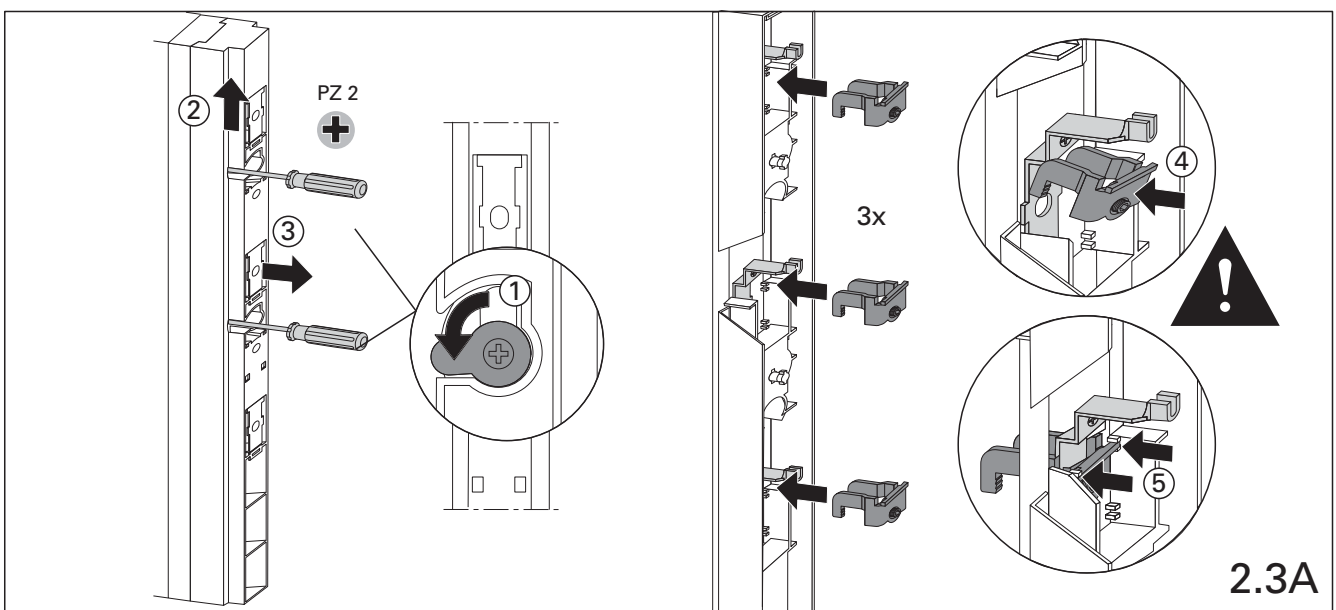
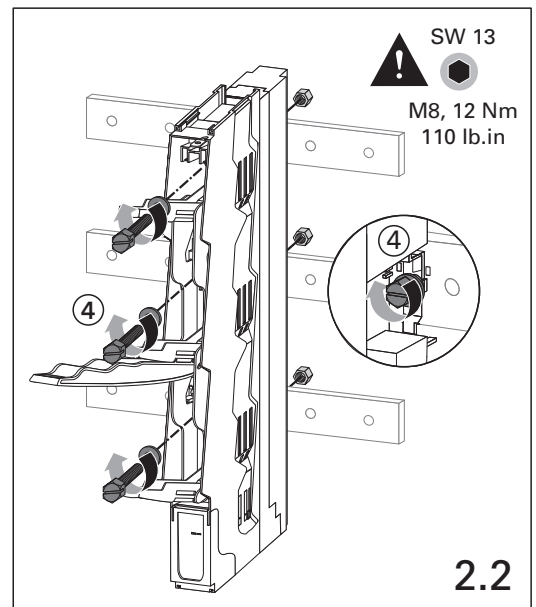
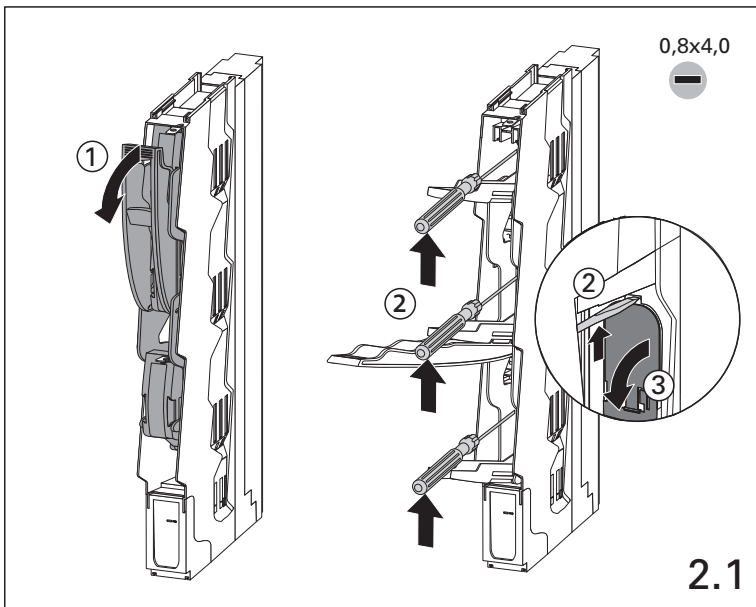
**(ru) Электрический ток! Опасно для жизни!**

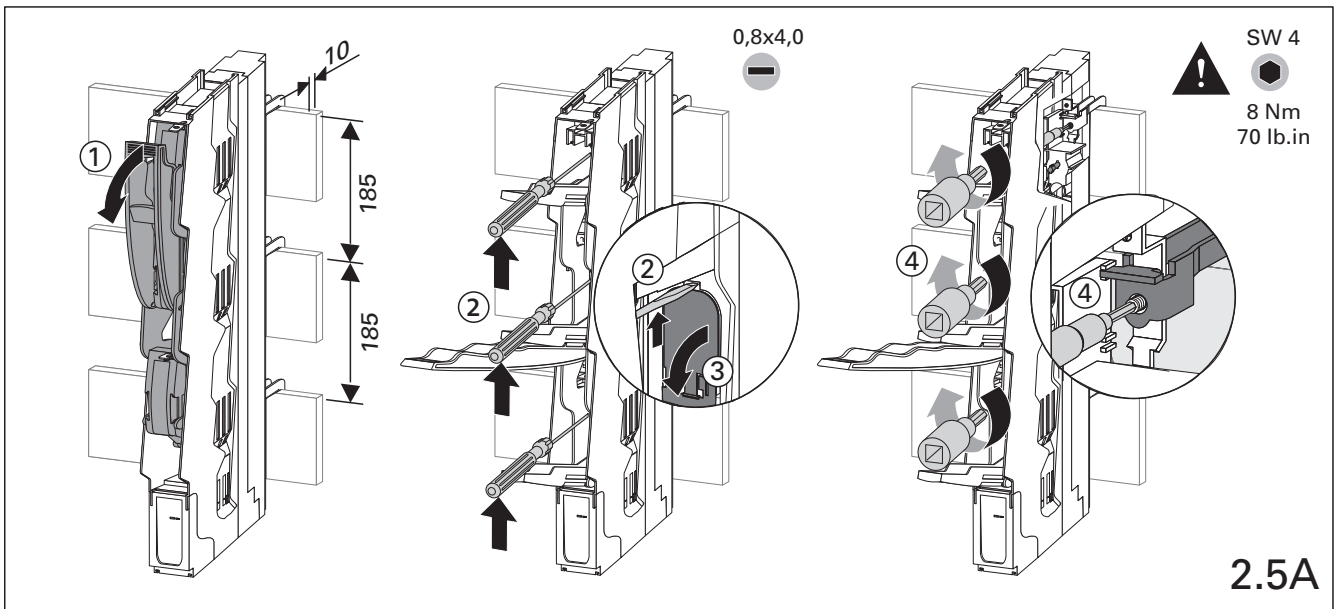
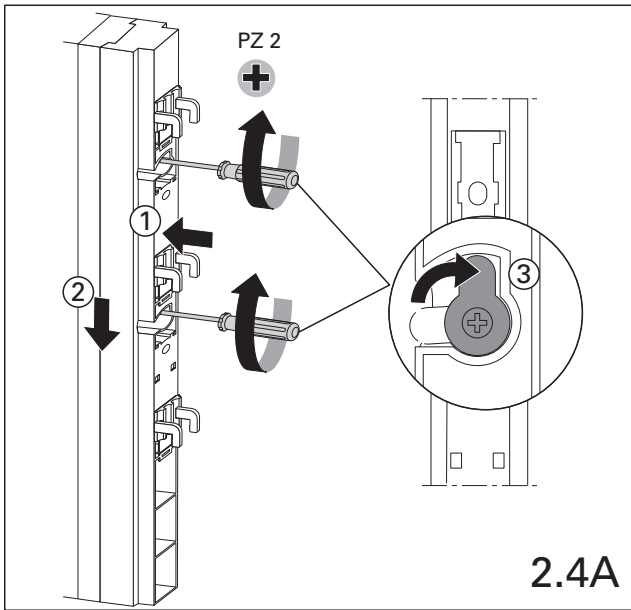
Только специалисты или проинструктированные лица могут выполнять следующие операции.

1. Schienensystem Busbar system

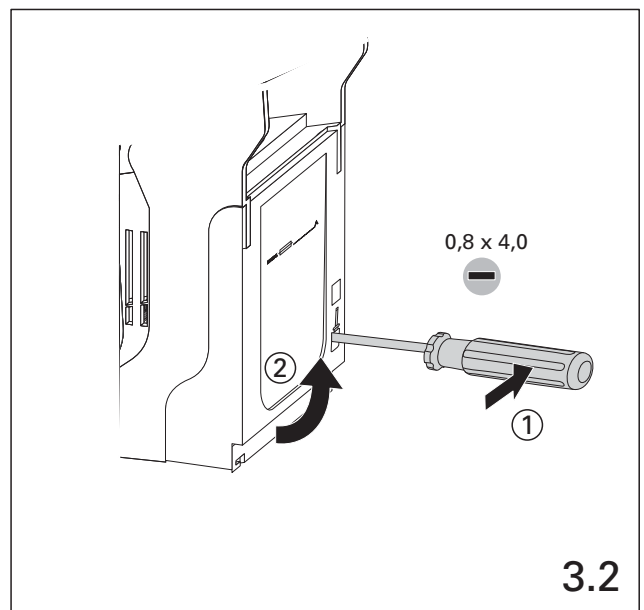
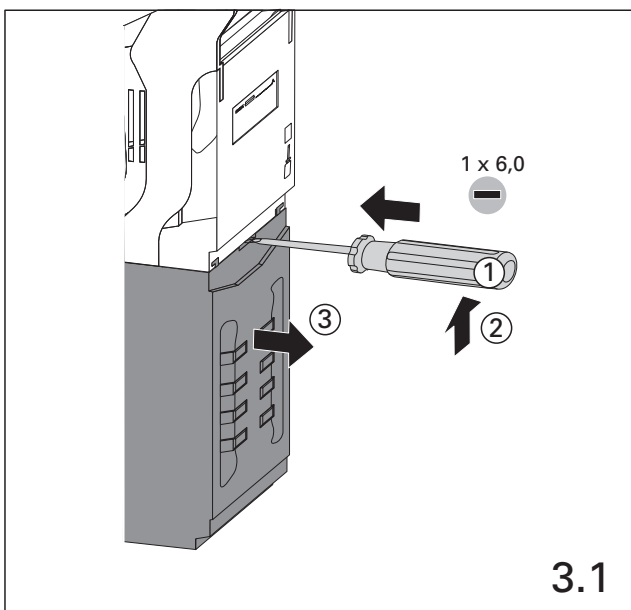


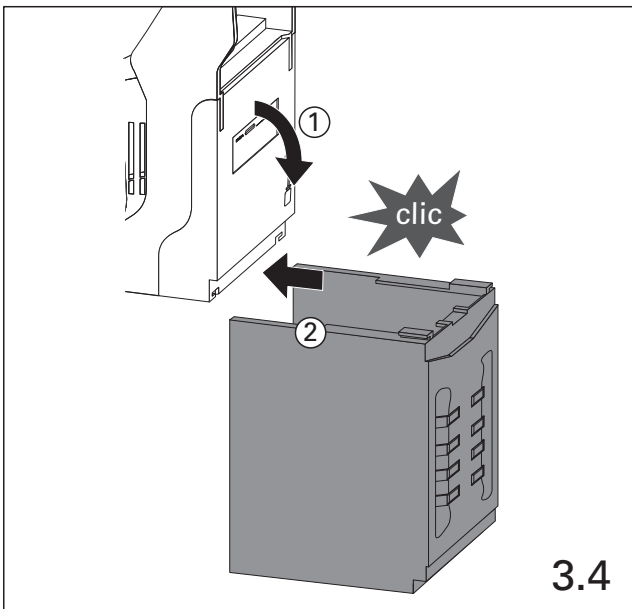
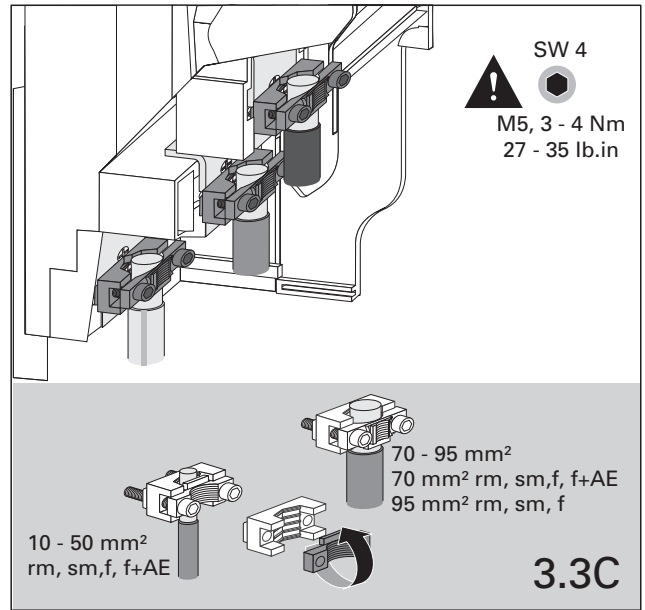
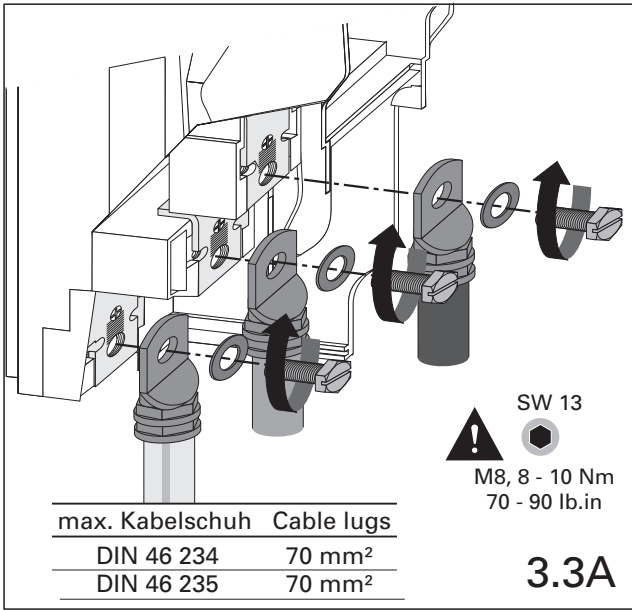
2. Montage Assembly



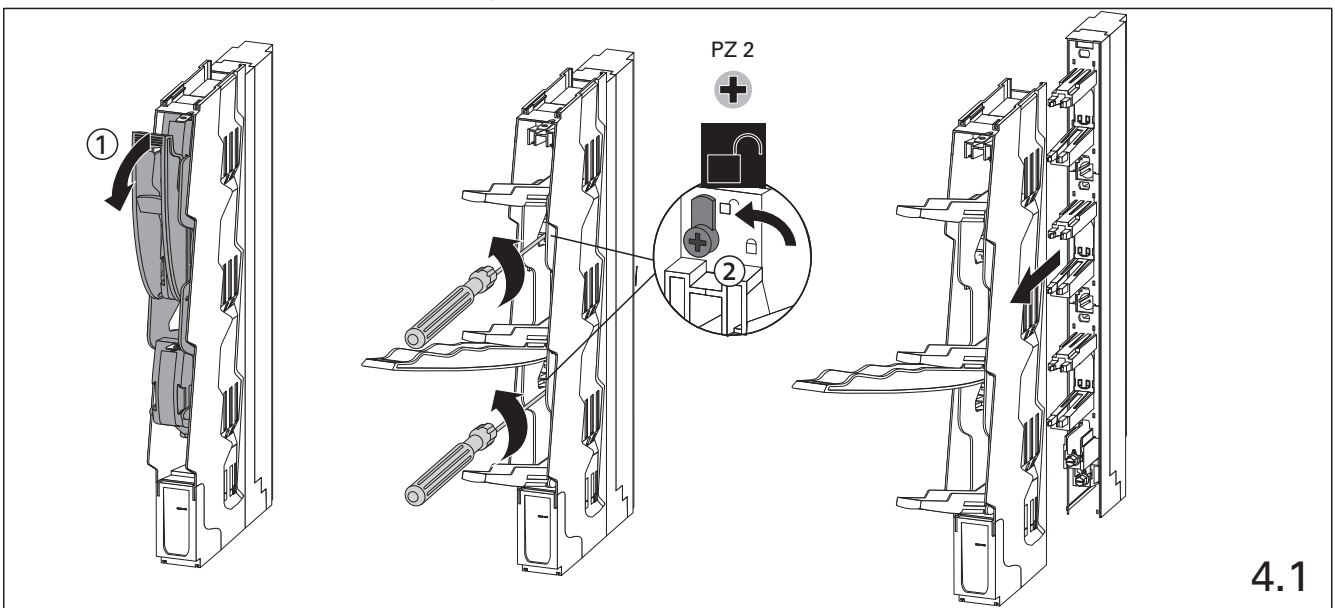


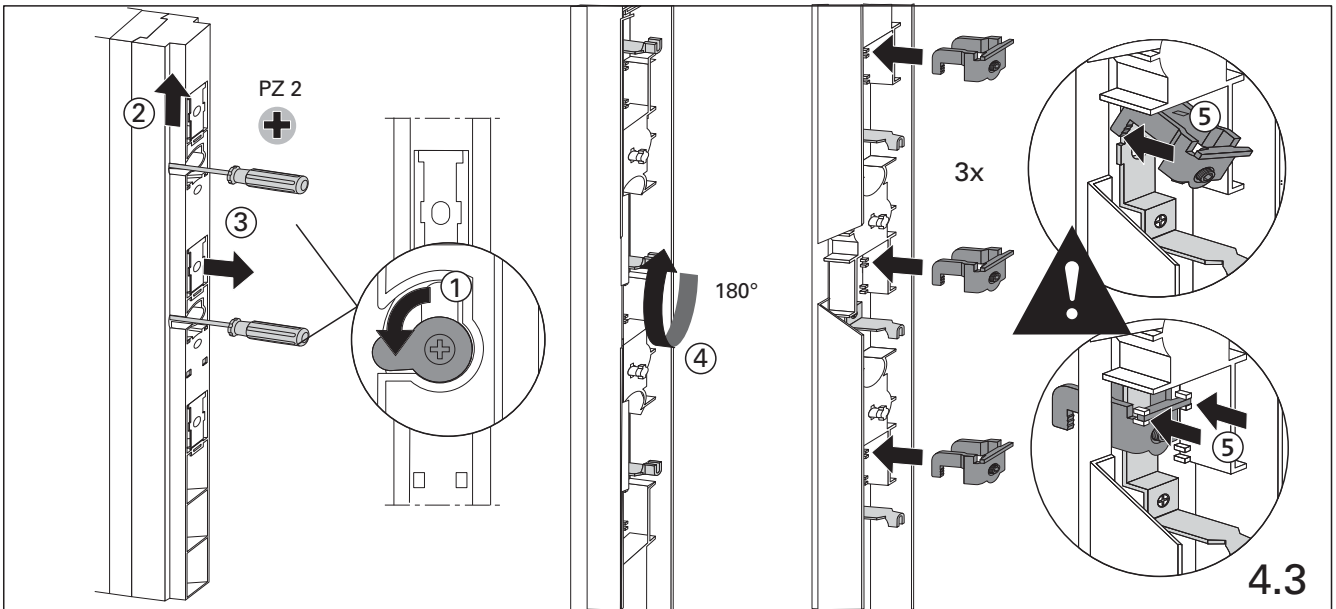
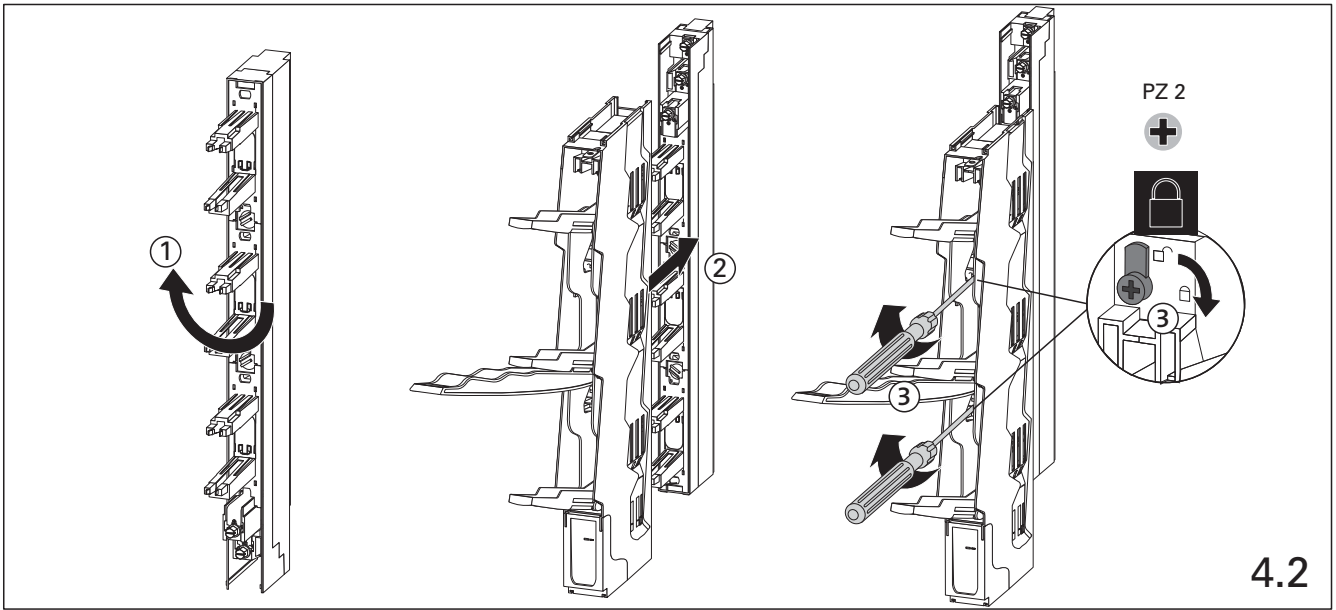
### 3. Anschlüsse Connections



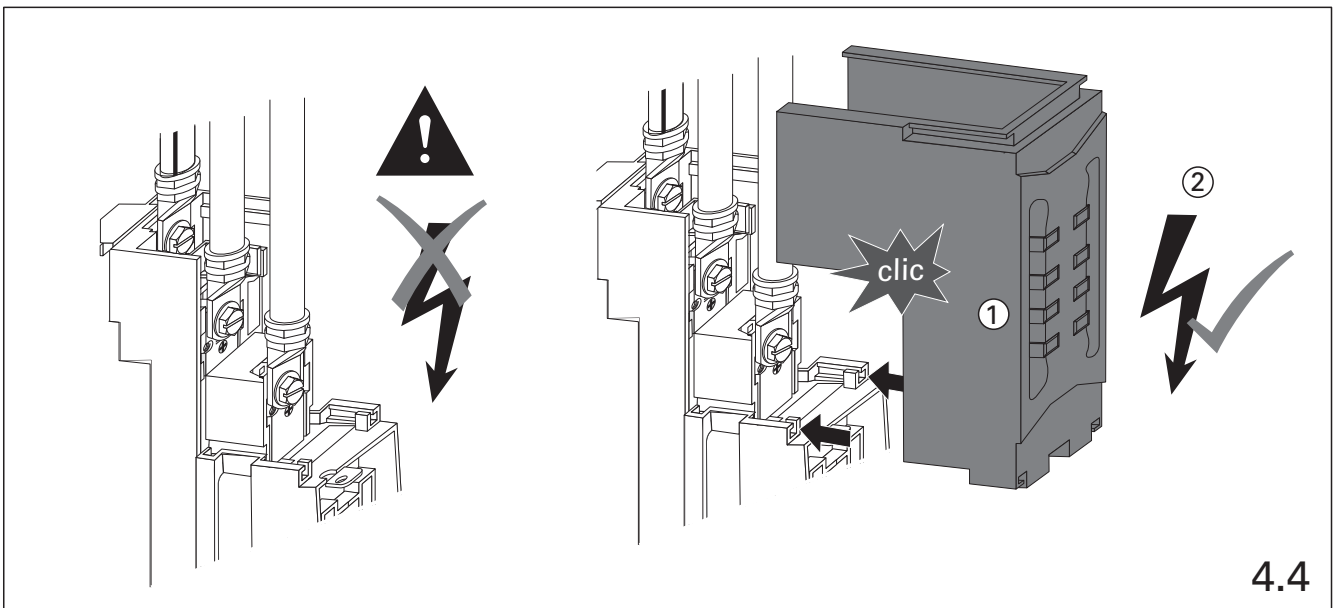


4. Anschlüsse oben Connection up

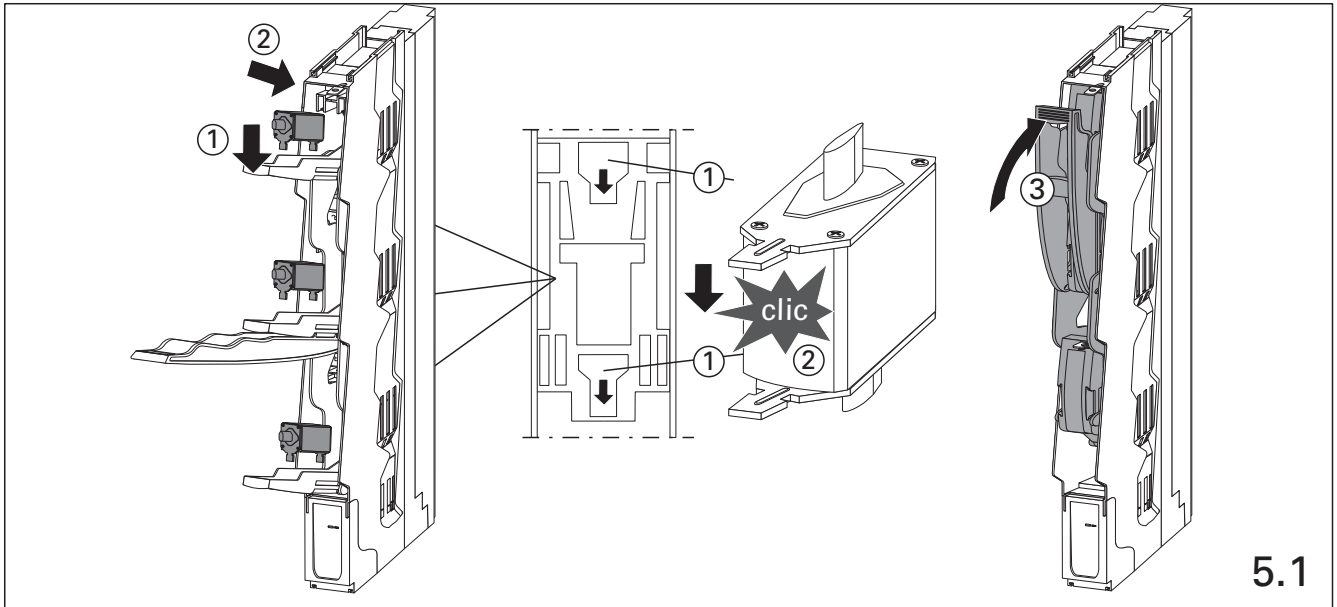




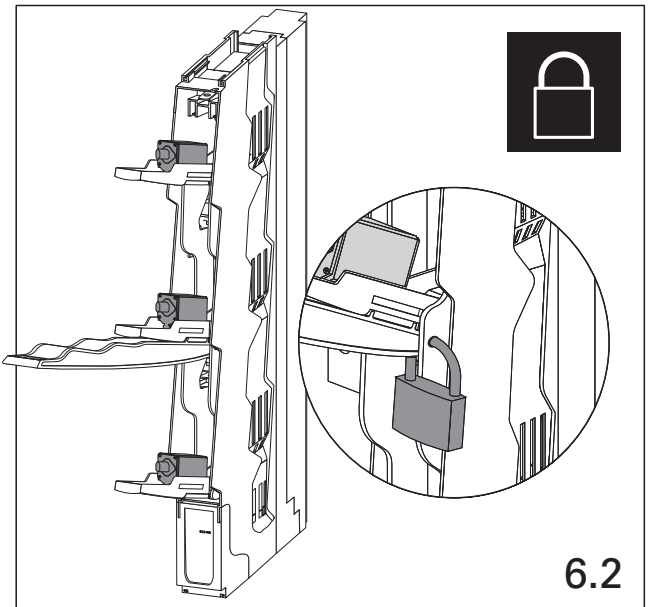
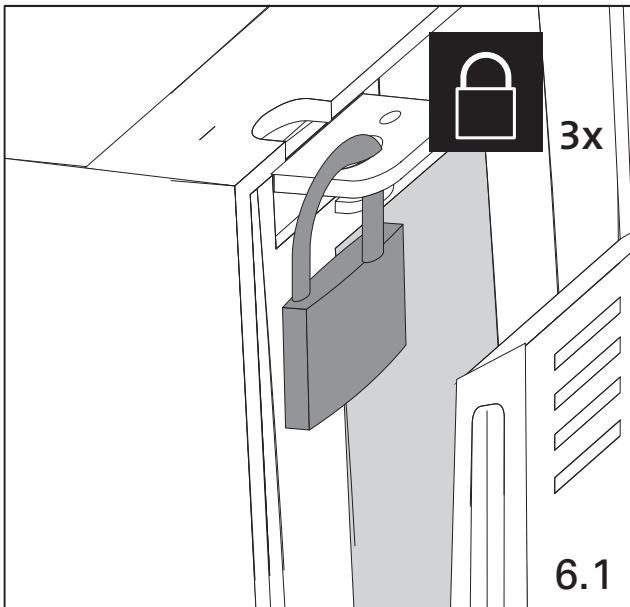
Abdeckung immer verwenden      Always use the cover



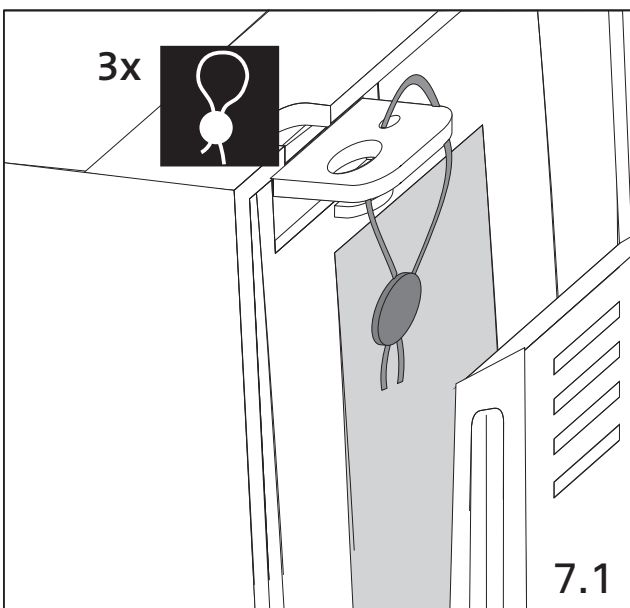
5. Sicherung einsetzen      Insert the fuse



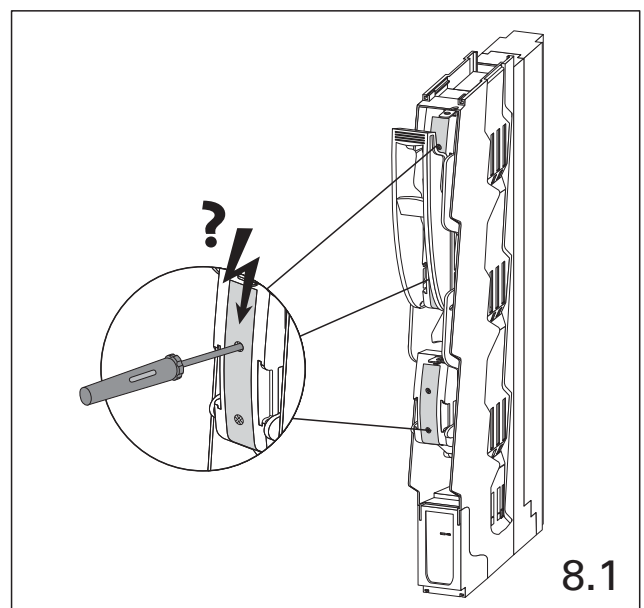
6. Abschließbarkeit      Locking the fuse holder



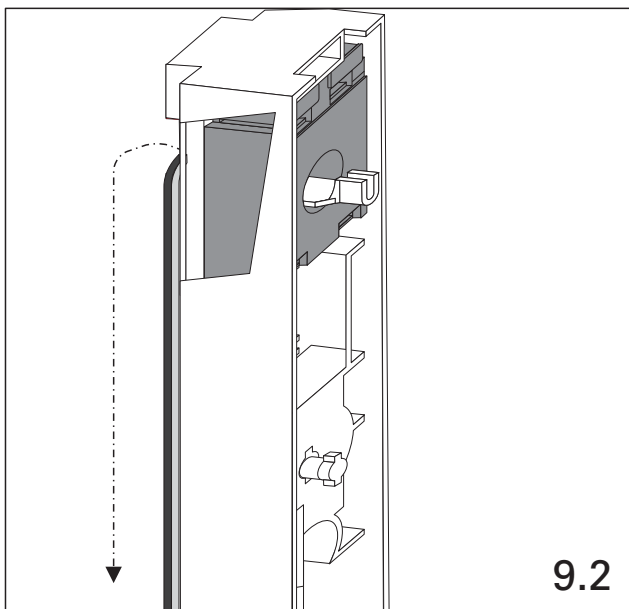
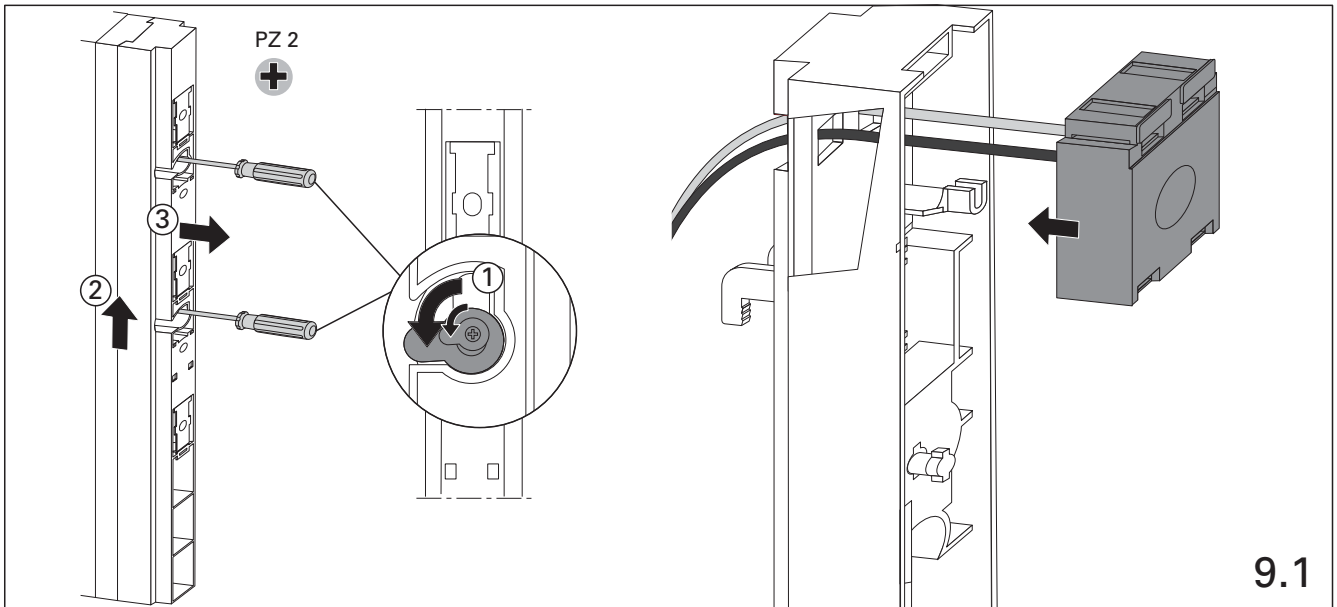
7. Plombieren      Sealing



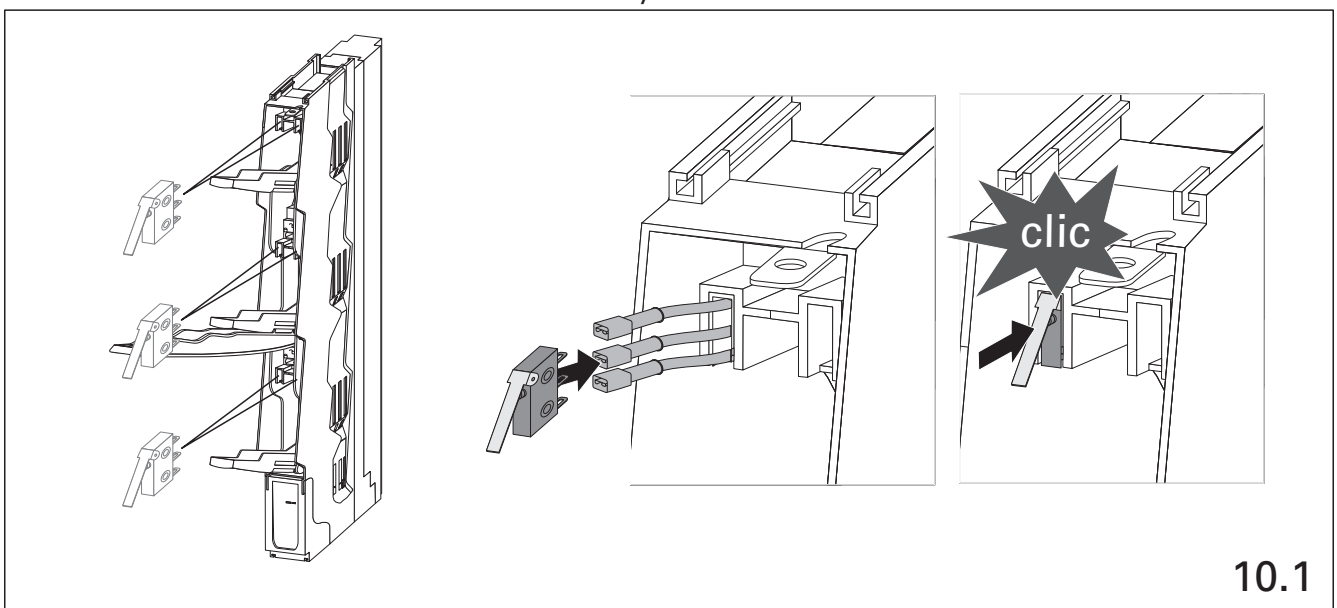
8. Spannungsprüfung      Voltage test



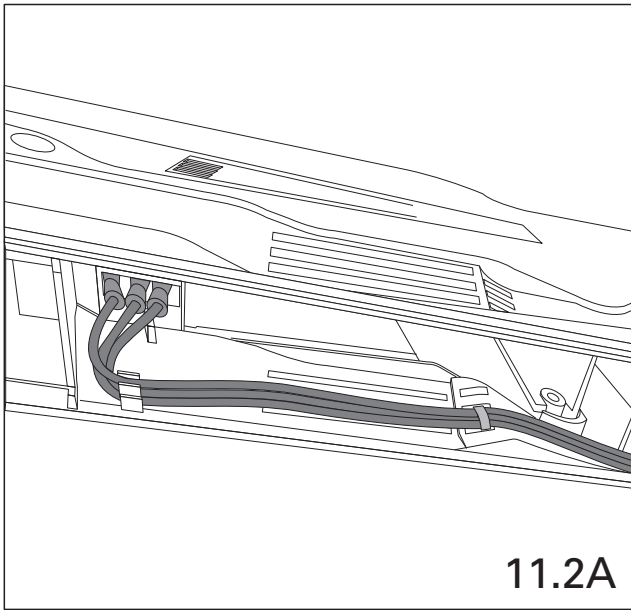
9. Zubehör - Stromwandler, Einbau und Kabelverlegung  
Accessories - Current transformer, assembly and cable routing



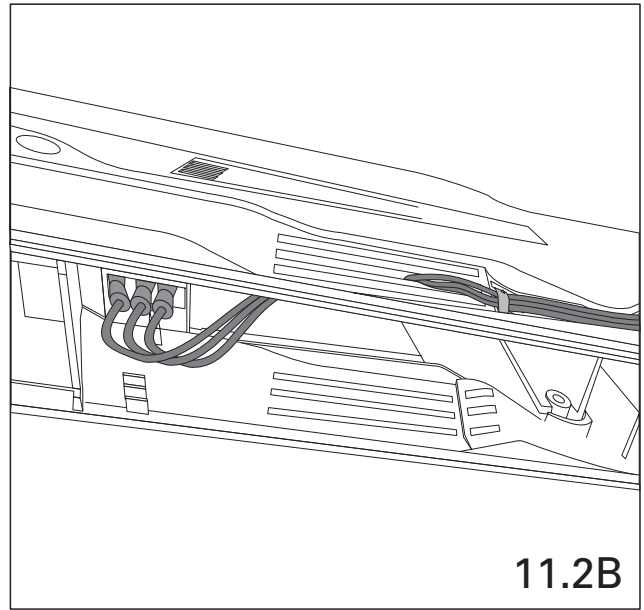
11. Meldeschalter-Einbau Pilot switch-assembly



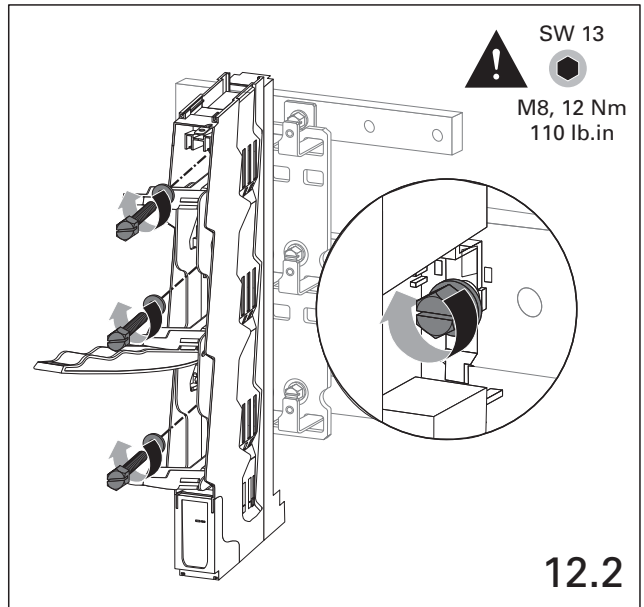
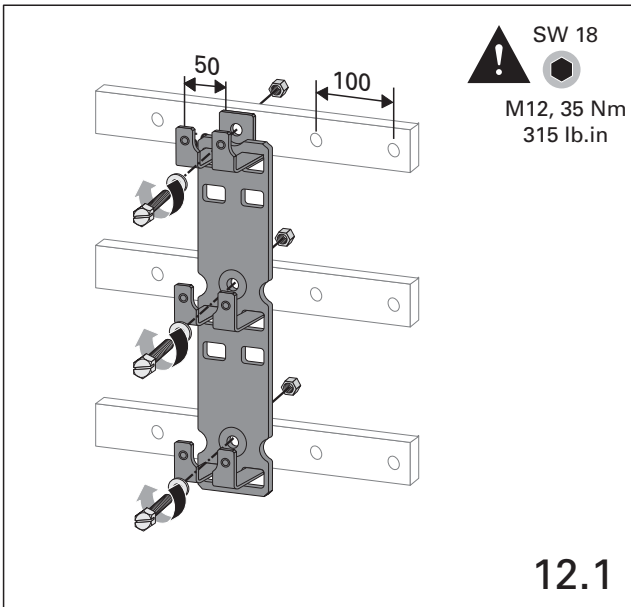
11.A Meldeschalter-Kabelverlegung innen  
Pilot switch-cable routing inside



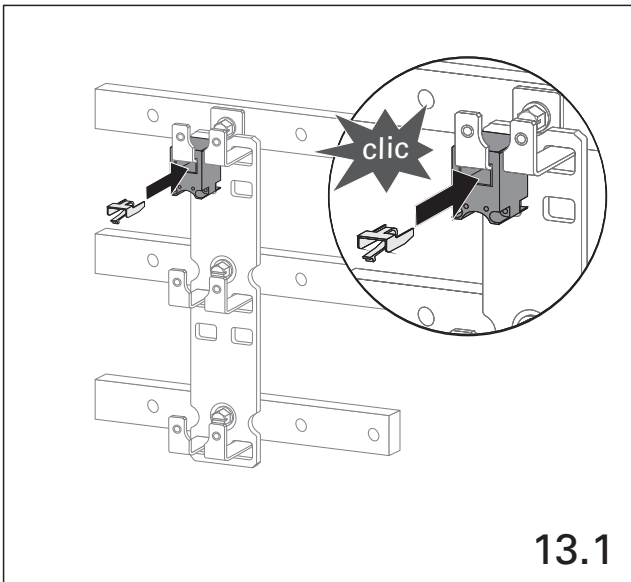
11.B Meldeschalter-Kabelverlegung außen  
Pilot switch-cable routing outside



12. Doppeladapter Double adapter



13. Stromwandler Current Transformer



14. Elektronische Sicherungsüberwachung  
Electronic fuse monitoring

