



Carrier, +label, MARCHE

Part no. **M22S-ST-F1**  
 Catalog No. **256792**  
 Alternate Catalog No. **M22S-ST-F1Q**

Similar to illustration

## Delivery program

|                            |  |    |               |
|----------------------------|--|----|---------------|
| Product range              |  |    | Accessories   |
| Basic function accessories |  |    | Legend holder |
|                            |  |    | Complete      |
| Width                      |  | mm | 30            |
| Height                     |  | mm | 50            |
| Design                     |  |    | Round         |
| <b>Colour</b>              |  |    |               |
|                            |  |    | Black         |
| RAL Value                  |  |    | RAL 9005      |
| Inscription                |  |    | MARCHE        |
| Degree of Protection       |  |    | IP66          |
| Connection to SmartWire-DT |  |    | no            |

## Technical data

### General

|                      |  |    |           |
|----------------------|--|----|-----------|
| Degree of Protection |  |    | IP66      |
| Ambient temperature  |  |    |           |
| Open                 |  | °C | -25 - +70 |

## Design verification as per IEC/EN 61439

|                                                                                                                        |            |    |                                                                    |
|------------------------------------------------------------------------------------------------------------------------|------------|----|--------------------------------------------------------------------|
| Technical data for design verification                                                                                 |            |    |                                                                    |
| Rated operational current for specified heat dissipation                                                               | $I_n$      | A  | 0                                                                  |
| Heat dissipation per pole, current-dependent                                                                           | $P_{vid}$  | W  | 0                                                                  |
| Equipment heat dissipation, current-dependent                                                                          | $P_{vid}$  | W  | 0                                                                  |
| Static heat dissipation, non-current-dependent                                                                         | $P_{vs}$   | W  | 0                                                                  |
| Heat dissipation capacity                                                                                              | $P_{diss}$ | W  | 0                                                                  |
| Operating ambient temperature min.                                                                                     |            | °C | -25                                                                |
| Operating ambient temperature max.                                                                                     |            | °C | 70                                                                 |
| IEC/EN 61439 design verification                                                                                       |            |    |                                                                    |
| 10.2 Strength of materials and parts                                                                                   |            |    |                                                                    |
| 10.2.2 Corrosion resistance                                                                                            |            |    | Meets the product standard's requirements.                         |
| 10.2.3.1 Verification of thermal stability of enclosures                                                               |            |    | Meets the product standard's requirements.                         |
| 10.2.3.2 Verification of resistance of insulating materials to normal heat                                             |            |    | Meets the product standard's requirements.                         |
| 10.2.3.3 Verification of resistance of insulating materials to abnormal heat and fire due to internal electric effects |            |    | Meets the product standard's requirements.                         |
| 10.2.4 Resistance to ultra-violet (UV) radiation                                                                       |            |    | Please enquire                                                     |
| 10.2.5 Lifting                                                                                                         |            |    | Does not apply, since the entire switchgear needs to be evaluated. |
| 10.2.6 Mechanical impact                                                                                               |            |    | Does not apply, since the entire switchgear needs to be evaluated. |
| 10.2.7 Inscriptions                                                                                                    |            |    | Meets the product standard's requirements.                         |
| 10.3 Degree of protection of ASSEMBLIES                                                                                |            |    | Does not apply, since the entire switchgear needs to be evaluated. |
| 10.4 Clearances and creepage distances                                                                                 |            |    | Meets the product standard's requirements.                         |
| 10.5 Protection against electric shock                                                                                 |            |    | Does not apply, since the entire switchgear needs to be evaluated. |
| 10.6 Incorporation of switching devices and components                                                                 |            |    | Does not apply, since the entire switchgear needs to be evaluated. |

|                                                          |  |  |                                                                                                          |
|----------------------------------------------------------|--|--|----------------------------------------------------------------------------------------------------------|
| 10.7 Internal electrical circuits and connections        |  |  | Is the panel builder's responsibility.                                                                   |
| 10.8 Connections for external conductors                 |  |  | Is the panel builder's responsibility.                                                                   |
| 10.9 Insulation properties                               |  |  |                                                                                                          |
| 10.9.2 Power-frequency electric strength                 |  |  | Is the panel builder's responsibility.                                                                   |
| 10.9.3 Impulse withstand voltage                         |  |  | Is the panel builder's responsibility.                                                                   |
| 10.9.4 Testing of enclosures made of insulating material |  |  | Is the panel builder's responsibility.                                                                   |
| 10.10 Temperature rise                                   |  |  | Not applicable.                                                                                          |
| 10.11 Short-circuit rating                               |  |  | Is the panel builder's responsibility. The specifications for the switchgear must be observed.           |
| 10.12 Electromagnetic compatibility                      |  |  | Is the panel builder's responsibility. The specifications for the switchgear must be observed.           |
| 10.13 Mechanical function                                |  |  | The device meets the requirements, provided the information in the instruction leaflet (IL) is observed. |

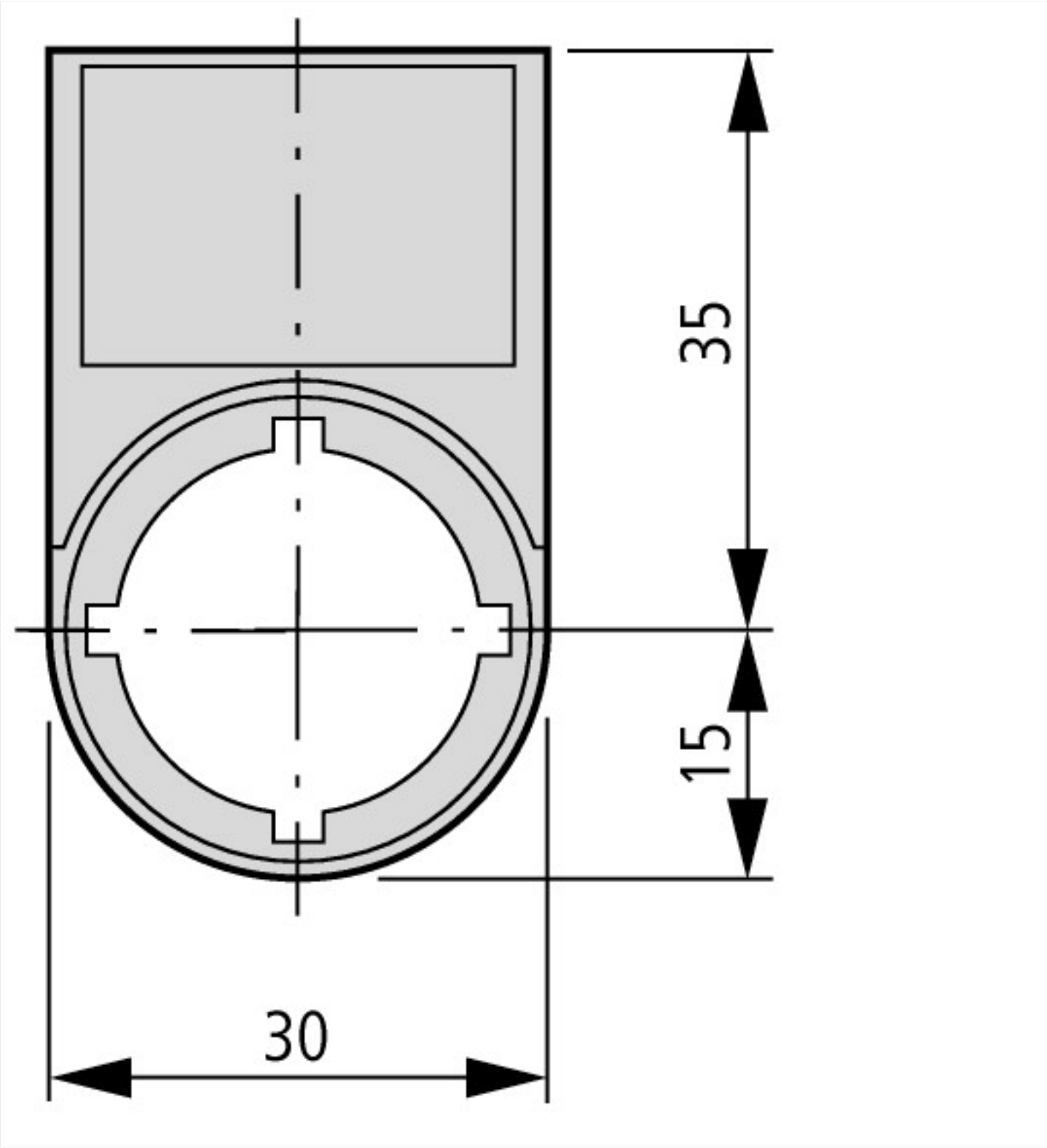
## Technical data ETIM 7.0

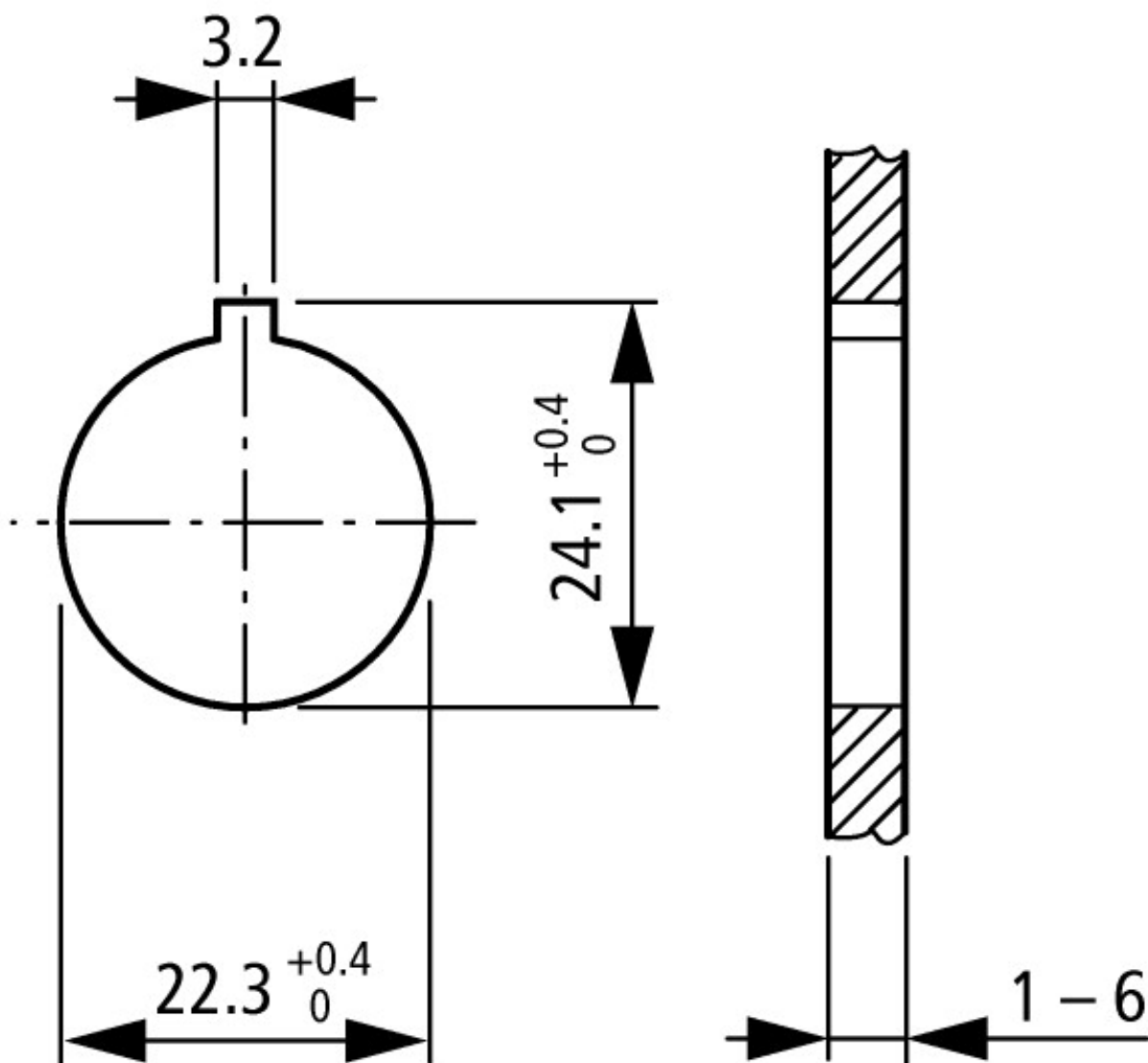
|                                                                                                                                                                                                    |  |    |             |
|----------------------------------------------------------------------------------------------------------------------------------------------------------------------------------------------------|--|----|-------------|
| Low-voltage industrial components (EG000017) / Text plate holder for control circuit devices (EC001032)                                                                                            |  |    |             |
| Electric engineering, automation, process control engineering / Low-voltage switch technology / Command and alarm device / Sign carrier for command devices (ecl@ss10.0.1-27-37-12-29 [AKF047014]) |  |    |             |
| Width                                                                                                                                                                                              |  | mm | 30          |
| Height                                                                                                                                                                                             |  | mm | 50          |
| Hole diameter                                                                                                                                                                                      |  | mm | 22.5        |
| Width opening                                                                                                                                                                                      |  | mm | 0           |
| Height opening                                                                                                                                                                                     |  | mm | 0           |
| Colour                                                                                                                                                                                             |  |    | Black       |
| Shape                                                                                                                                                                                              |  |    | Rectangular |

## Approvals

|                             |  |  |                                   |
|-----------------------------|--|--|-----------------------------------|
| North America Certification |  |  | UL/CSA certification not required |
|-----------------------------|--|--|-----------------------------------|

Dimensions





Mounting hole with lug slot

Actuating and indicator elements

## Assets (links)

[Declaration of CE Conformity](#)

00003256

## Additional product information (links)

**IL04716002Z (AWA1160-1745) RMQ-Titan System**

IL04716002Z (AWA1160-1745) RMQ-Titan System

[ftp://ftp.moeller.net/DOCUMENTATION/AWA\\_INSTRUCTIONS/IL04716002Z2018\\_10.pdf](ftp://ftp.moeller.net/DOCUMENTATION/AWA_INSTRUCTIONS/IL04716002Z2018_10.pdf)