

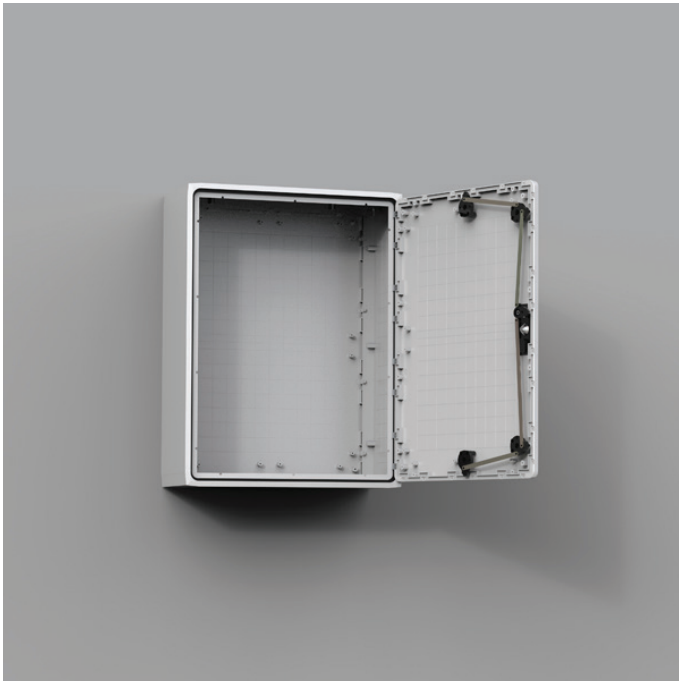
UDPT5075

Polyester Enclosure Modular version

nVent

HOFFMAN

CONNECT AND PROTECT



The polyester modular wall mounted enclosure range, UDP/UDPT, with a IP 65/54 protection degree, is available off the shelf in many different sizes. Either a plain door or transparent door can be ordered. Several enclosures may be combined to extend the width or depth to, for example, accommodate large components and maintain internal communication. This enclosure range is well suited for outdoor installations, even when exposed to direct sunlight. The risk for component failure, and with that unnecessary downtime, is eliminated as water and dust are prevented from entering the enclosure.



IP 65/54 | TYPE 4, 4X, 12, 13 | IK 10/07

Transparent door

H	500
W	750
D	320
N° of doors	1
Weight (kg)	14.80
Item no.	UDPT5075

Material: Fibre-glass reinforced polyester.
UDPT viewing area: polycarbonate.

Body: Modular moulded, with rear fixing. Direct fixing to the wall or by use of wall mounted brackets. To a pole by use of EPF, to the floor by use of the plinth UPP or DIN-base UAF and UMPS. In single plain door enclosures, sealing is ensured by an EPDM gasket glued against the frame.

Door: Flush mounted door, with or without window and 100° opening. For larger sizes, a door support is supplied for easier closing. In double door enclosures, sealing is ensured by an injected one piece polyurethane gasket.

Lock: Premounted handle, suitable for all types of half cylinder locks (standard depth of 40 mm). Five locking points (three points in 500 mm width enclosures).

Temperature resistance: -25 °C to 70 °C in continuous use (peak temperatures up to 130 °C).

Characteristics: Self extinguishing and halogen free. Double insulated, according to EN61439-1. Rated insulation voltage $U_i=1000V$.

Protection: Complies with IP 65 | TYPE 4, 4X, 12, 13 for single and double door enclosures / IP 54 | TYPE 4, 4X, 12, 13 for transparent door enclosures. Impact resistance IK 10 (IK 07 for enclosures with transparent door).

Approvals: CE, CSA, GOST and cULus_UL Listed. For further approvals, please contact nVent HOFFMAN's sales department.

Finish: RAL 7035, precoloured raw material.

Delivery: Enclosure with door, fixing screws for the mounting plate and wall mounting brackets. (Lock cylinder is not included in the delivery).