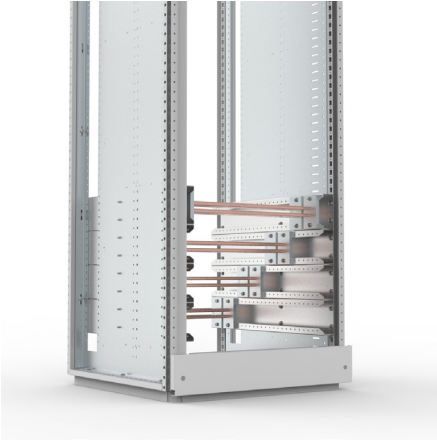


# MSHSI

## HORIZONTAL SUPPORT FOR BUSBAR SUPPORT MSHS



**Description:** Support to be mounted horizontally in the enclosure. Is mounted to the internal side panels, MSPS, and the enclosure frame. Makes it possible to mount the MSHS busbar support in depth in a horizontal position. Ideal when there are many incoming/outgoing cables and need a horizontal connection.

**Material:** 1.5 mm galvanized steel.

**Delivery:** 2 pcs. of horizontal support.

H	D	Item no.
100	600	MSHSI600
100	800	MSHSI800