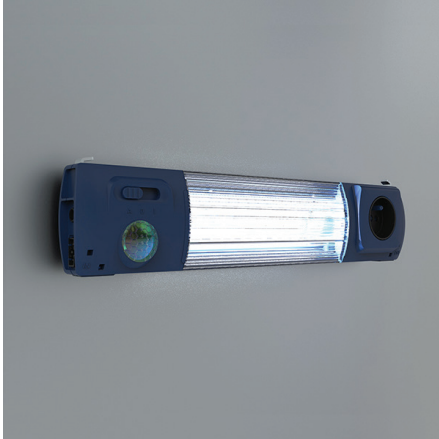


# EL1200MS

LED Enclosure light with socket and movement sensor



**Description:** LED enclosure light specially designed for nVent HOFFMAN enclosures. Fast and tool-free assembly thanks to a latching hook system designed to fit the 25mm hole pattern on nVent HOFFMAN enclosures. May be fitted horizontally or vertically.

**Lamp type:** LED.

**Luminosity:** 1200 lm.

**Light colour:** 4000 K (neutral white).

**Power consumption:** 12 W

**Operating voltage:** 100 V - 240 V ~, 50/60 Hz

**Connection:** Infeed, 3-pole. Through wiring, 3-pole.

**Operating temperature:** -20 °C ... +55 °C

**Protection:** Protection class II

**Follow-up time of the motion detector:** 120 s

**Dimensions:** 364 × 76 × 48 mm.

Operating voltage	Socket type	Width	Item no.
100V-240V~, 50/60 Hz	Type F (Shucko)	364	EL1200MS
100V-240V~, 50/60 Hz	Type E	364	EL1200MS-BF
100V-240V~, 50/60 Hz	Type J	364	EL1200MS-CH
100V-240V~, 50/60 Hz	Type G	364	EL1200MS-GB
100V-240V~, 50/60 Hz	Type B	364	EL1200MS-US