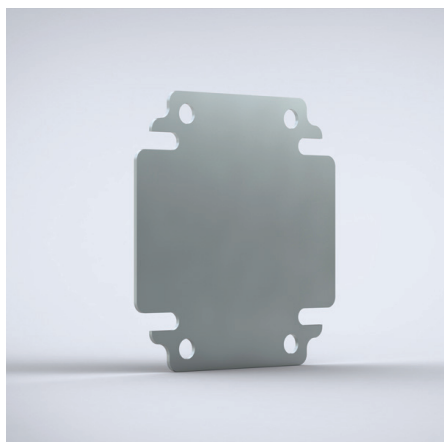


BMP-HMI

Mounting plate



Description: Steel mounting plate for terminal boxes.

Material: 2 mm galvanized steel.

Pack quantity: 1 piece.

Box dimension		Mounting plate dimensions		
H	W	h	w	Item no.
200	300	175	270	BMP2030
200	400	175	370	BMP2040
200	500	175	470	BMP2050
200	600	180	570	BMP2060