

Two hand safety Modules MD1D

CARLO GAVAZZI



- Safety Category III C according to EN 574
- Safety Category 4 according to EN 954-1
- Redundant circuit
- 2 NO safety outputs
- Dual channel inputs
- Automatic RESET
- Self monitoring
- Failure diagnosis by LEDs
- Max delay between inputs 500 ms

Product Description

Two hand safety module according to EN 60204-1, EN 292-1 /-2, EN 574 and 954-1, safety category IIIC according to EN 574.

These safety module is suited to be used in applications at the highest risk level as presses and punches.

Ordering Key

MD1 D

Housing _____
 Application _____
 Controlled Devices _____
 Safety Category _____

Electrical Specifications

Power supply	24 VAC \pm 10% 50-60Hz / 24 VDC \pm 10%	Safety output switching voltage /current /capability	230VAC/6A/2000VA
Power consumption	< 7 VA / 7 W	Safety output contact fuse protection	6 A fast or 4 A delayed
Input current/voltage	150 mA @ 24 VDC	Insulation voltage	2.5 KV for signal parts; 4.0 KV for safety output parts; Pollution degree 2 Overvoltage category III
Safety outputs	2 NO		
Auxiliary outputs	1 NPN 50 mA, 40 V		

Time Specifications

Delay on energisation	\leq 150 ms
Delay on de-energisation	\leq 25 ms
Recovery time	\geq 25 ms
Channel simultaneity	\leq 500 ms

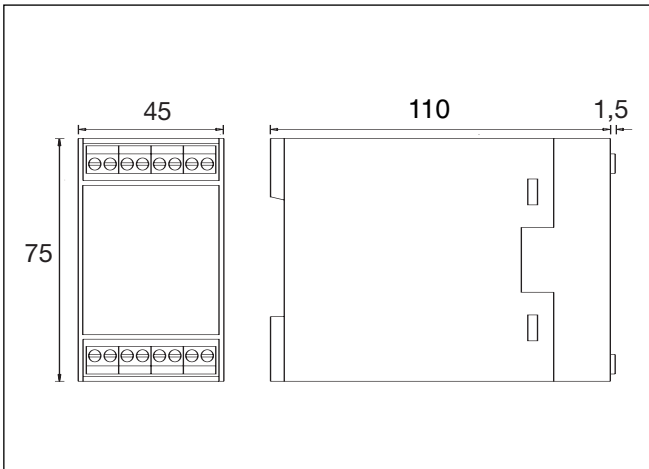
Environmental Specifications

Operating temperature	0°C ... + 55°C
Storage temperature	-25°C ... + 55°C

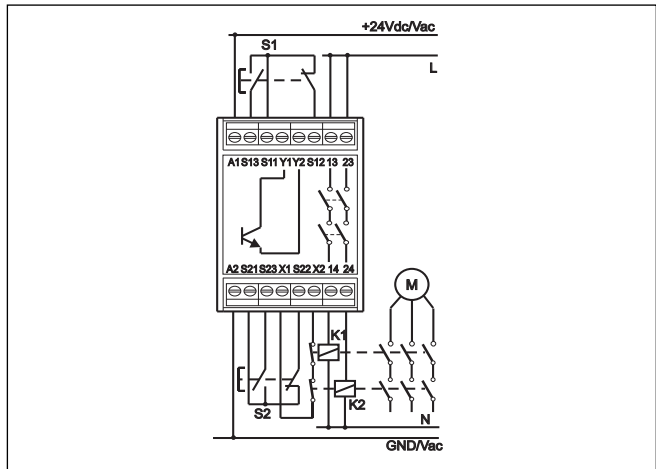
Mechanical Specifications

Protection degree terminals	IP 20	Max cross section of external conductors	2.5 mm ² flexible wire 4 mm ² rigid wire
Protection degree housing	IP 30	Dimensions	45 x 75 x 110 mm
Housing material	ABS	Weight	300 g
Housing type	45 mm housing models		
Mounting	DIN rail		

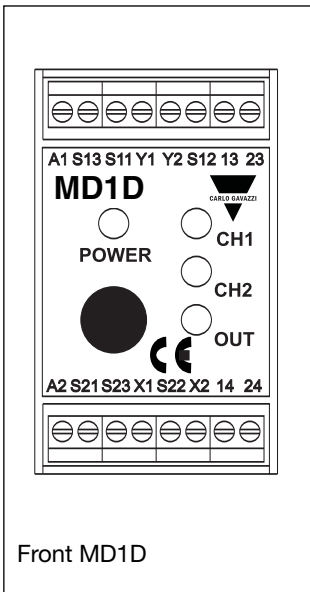
Dimensions



Wiring Diagrams



Connection Sample



Connections

Terminal Function	Connection
A1	+24 VDC or AC supply
A2	GND or AC supply
S11-S12-S13	First input button
S21-S22-S23	Second input button
X1-X2	Feedback input circuit for the control of external force guided contacts relays
13-14	First safety output (NO)
23-24	Second safety output (NO)
Y1	Collector Auxiliary NPN output (NO)
Y2	Emitter Auxiliary NPN output (NO)