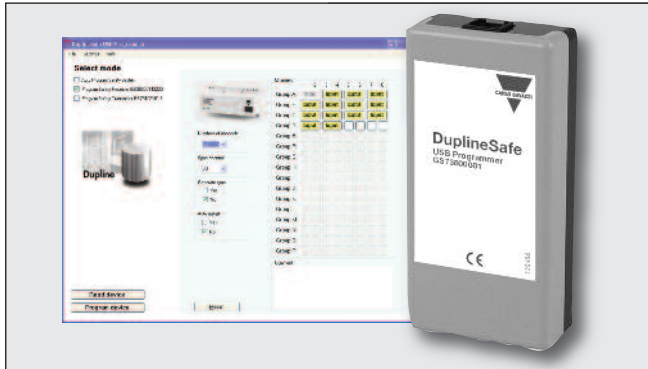


DuplineSafe Configuration Programmer Type GS 7380 0081



- USB Configuration unit
- Configures the DuplineSafe Relay Output module GS38300143230
- Configures the DuplineSafe Input module GS75102101x
- Supplied by USB

Product Description

Configuration unit for Dupline-Safe Safety Input module type number GS75102101x. The configuration settings can be saved and printed. DuplineSafe safety relay Output module type number GS38300143230 and Dupline-

Ordering Key

GS 7380 0081

Type: Dupline® _____
Type no. _____

Product Specifications

Cable 1 GS73800081 to PC	USB cable (57-559)
Cable 2 GS73800081 to GS75102101-1	Cable (57-571)
Cable 3 GS73800081 to GS38300143230	Phone cable 6/6 (57-513)

Type Selection

Supply	Ordering no.
USB	GS 7380 0081

Including:

- 1 CD-rom
- 1 USB converter box
- 1 USB cable
- 1 programming cable for GS38300143230
- 1 programming cable for GS75102101-1

Supply Specifications

Power supply: Supplied by the USB port

General Specifications

Environment	
Degree of protection	IP 40
Pollution degree	3 (IEC 60664)
Operating temperature	0° to +50°C (+32° to +122°F)
Storage temperature	-20° to +60°C (-4° to +140°F)
Humidity (non-condensing)	20 to 80%
Mechanical resistance	
Shock	15 G (11 ms)
Vibration	2 G (6 to 55 Hz)
Dimensions (l x w x d)	100 x 50 x 25 mm
Material	ABS, grey
Weight	100 g

System Requirements

The DuplineSafe USB Programmer software can be used with the following Windows versions:

Windows XP and
Windows Vista

PC hardware

Minimum hardware requirements

1.0 GHz
Pentium 3 processor
256 MB RAM
512 MB free harddisk space

Accessories

ADAPT 7380 To program the DuplineSafe safety input module type number GS75102101.
Ordering no. ADAPT 7380

Recommended hardware

2.0 GHz
Pentium 4 processor
512 MB RAM
5 GB free hard disk space