

BSM-CAPSTD1

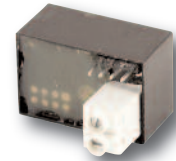
smart-house transmitter for Building Automation applications

1 programmable Push button

Supplied by smart-house, no external supply required

Channel coding by BGP-COD-BAT

Mounting behind blind flange



INPUT SPECIFICATIONS

Pulse prolongations 220 – 300 ms

SUPPLY SPECIFICATIONS

Power supply Supplied by smart-house bus

Rated operational current
Typically 2 mA

GENERAL SPECIFICATIONS

Channel coding By BGP-COD-BAT and special cable: GAP-TPH-CAB
In/out Finger touch see fig. 1

Environment
Degree of protection IP 20
Pollution degree 3 (IEC 60664)
Operating temperature 0 - 50 °C/32 - 122°F
Storage temperature -20 - 70°C/-4 - 158°F

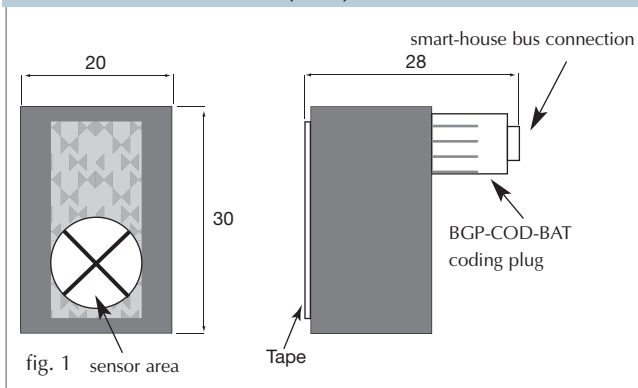
Humidity (non condensing) 20 - 80%

Weight 15 g

Dimensions 30 x 20 x 28 mm
(including tape)

Max. wire in terminals Max. 2 x 0.75 mm²

DIMENSIONS (mm) AND WIRING



TYPE SELECTION

Supply by smart-house

Ordering no. BSM-CAPSTD1

ACCESSORIES

Programming cable to BGP-COD-BAT GAP-TPH-CAB