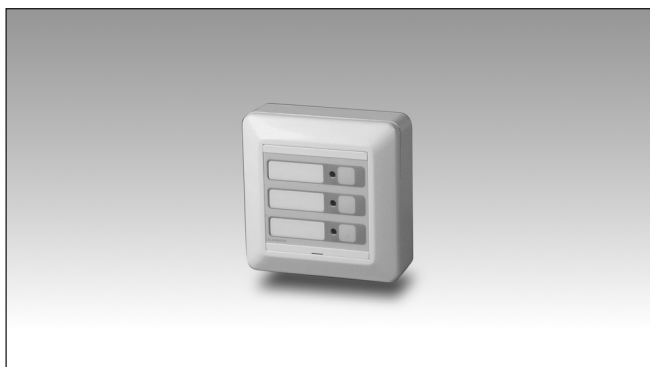


smart-house Light Switch Type BEW-LSx-U

CARLO GAVAZZI



- Light switch for building automation application
- 1, 2 or 3 individually programmable pushbutton inputs
- 1, 2 or 3 programmable LED's
- Supplied by smart-house bus, no external supply required
- Flush or surface mounting on Elko wall box and frame

Product Description

The BEW-LSx-U are light switches with 1, 2 or 3 buttons and 1, 2 or 3 LED outputs. The light switch is part of the smart-house concept for building automation applications and can

be used to control lights, roller blinds and all other functions supported by the smart-house controller. It is fully programmable via the SH tool.

Ordering Key

B E W L S 3 U

smart-house

Elko Compatibility

White

Light switch

Switch number

Smart Dupline®

Type Selection

Housing	Colour	LEDs	Supply by smart-house
55 x 55 mm	White	3 red	BEW-LS3-U
55 x 55 mm	White	2 red	BEW-LS2-U
55 x 55 mm	White	1 red	BEW-LS1-U

Input Specifications

Key Pad 1, 2 or 3 push-buttons

Output Specifications

LED 1, 2 or 3 red

Dupline® Specifications

Voltage	8.2 V
Maximum Dupline® voltage	10 V
Minimum Dupline® voltage	4.5 V
Maximum Dupline® current	
BEW-LS1-U	1.3 mA
BEW-LS2-U	2.0 mA
BEW-LS3-U	2.6 mA

Supply Specifications

Power supply Supplied by smart-house bus



General Specifications

Address assignments / channel programming	If it is used with the SH2WEB24 the address assignment is automatic: the controller recognises the module through the SIN (Specific Identification Number) that has to be inserted in the SH tool. If it is used with BH8-CTRL-230 the channels have to be programmed with the BGP-COD-BAT	Dimensions Mounting Material Colour	84 x 84 x 28.5 mm Elko mechanics ABS White
Environment Degree of protection Pollution degree Operating temperature Storage temperature Humidity (non-condensing)	IP 20 3 (IEC 60664) -20° to +50°C (-4° to 140°F) -30° to +60°C (-22° to 158°F) 20 to 80% RH	Weight CE Marking	65 g Yes
Connection Screwless detachable D+ D-	0.2 to 1.5 mm ² Signal GND	EMC Immunity - Electrostatic discharge - Radiated radiofrequency - Burst immunity - Surge - Conducted radio frequency - Power frequency magnetic fields - Voltage dips, variations, interruptions Emission - Conducted and radiated emissions - Conducted emissions - Radiated emissions	EN 61000-6-2 EN 61000-4-2 EN 61000-4-3 EN 61000-4-4 EN 61000-4-5 EN 61000-4-6 EN 61000-4-8 EN 61000-4-11 EN 61000-6-3 CISPR 22 (EN55022), cl. B CISPR 16-2-1 (EN55016-2-1) CISPR 16-2-3 (EN55016-2-3)

Housing

Mode of Operation

The BEW-LSx-U is fully programmable via the SH tool. Each push-button can be individually associated to one or more of the functions supported by the smart-house system.

the module is provided with a specific identification number (SIN): the user has only to insert the SIN in the SH tool when creating the system configuration.

BEW-LSx-U connected to the SH2WEB24

LED programming
 Also the LEDs are configurable via SH Tool:
 •The red LEDs can be individually programmed as function status indication. If the Dupline® bus is faulty or missing, the LED will be OFF.

Coding/Addressing

If the light switch module is connected to the SH2WEB24 controller, no addressing is needed since

BEW-LSx-U connected to the BH8-CTRLX-230

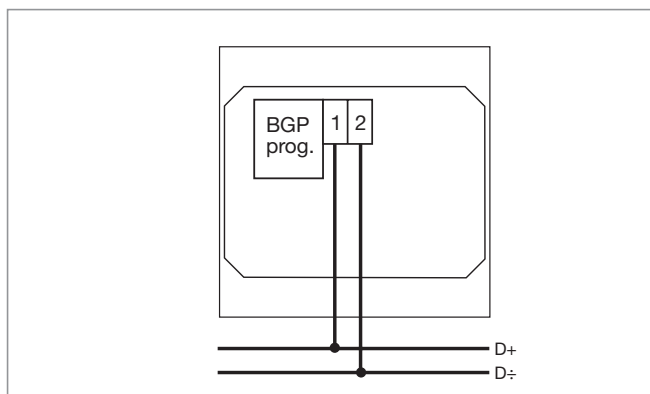
Coding/Addressing

If the light switch module is connected to the BH8-CTRLX-230 controller, the user has to program the Dupline® channels using the BGP-COD-BAT: these modules have up to 3 inputs (push buttons) and up to 3 outputs (LEDs) channels.
 I/O 1-3: push button 1-3
 I/O 5-7: LED 1-3

LED programming

•The red LEDs can be individually programmed as function status indication. If the Dupline® bus is faulty or missing, the LED will be OFF.

Wiring Diagrams



Push-buttons/Dimensions (mm)

